



Lingdale Road, Cheadle Hulme, SK8 5DS
£495,000

SNAPES
SALES & LETTINGS AGENTS





Lingdale Road

Cheadle Hulme, Cheadle

Council Tax band: D

Tenure: Freehold

EPC Energy Efficiency Rating: C

EPC Environmental Impact Rating:

- Immaculate & Extended Three Bedroom Semi Detached
- Fully Renovated To A High Standard
- Fantastic Open Aspect To Rear
- Porch, Entrance Hallway & Two Reception Rooms With Bay Windows & French Doors
- Stunning Kitchen With Central Island, Underfloor Heating, Integrated Appliances & Bi-Folds
- Utility Room With Dog Wash, Garden Access & Downstairs Modern Bathroom
- Three Good Sized Bedrooms With Fitted Wardrobes & Storage
- Stylish Shower Room & WC
- Low Maintenance Private South Westerly Facing Garden With Two Sheds & Power & Gate To Rear Park
- Catchment For Laurus Primary, Bradshaw Hall Primary, St James Catholic High School & Cheadle Hulme High School





Porch

Entrance Hallway

14' 7" x 7' 10" (4.45m x 2.40m)

Dining Room

15' 10" x 12' 0" (4.82m x 3.66m)

Living Room

12' 10" x 12' 0" (3.91m x 3.66m)

Kitchen

12' 6" x 12' 9" (3.81m x 3.89m)

Utility Room

24' 3" x 6' 2" (7.38m x 1.87m)

Bathroom

6' 11" x 4' 8" (2.10m x 1.42m)

Master Bedroom

13' 4" x 12' 0" (4.07m x 3.66m)

Bedroom Two

12' 10" x 10' 10" (3.90m x 3.30m)

Bedroom Three

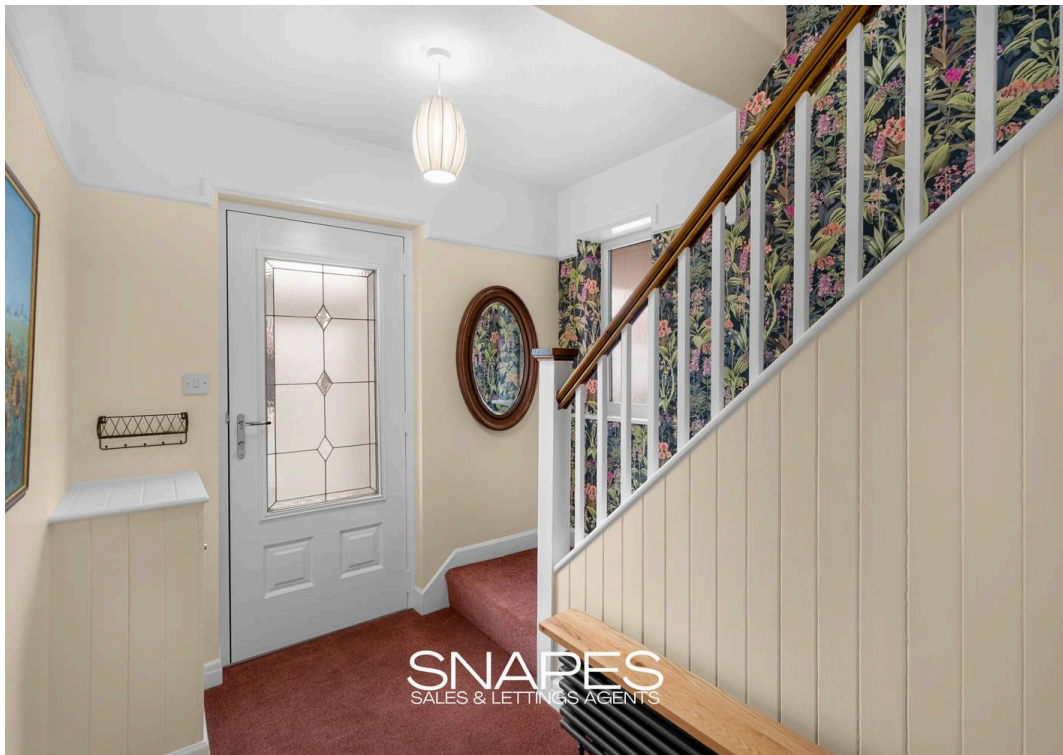
9' 7" x 9' 0" (2.92m x 2.74m)

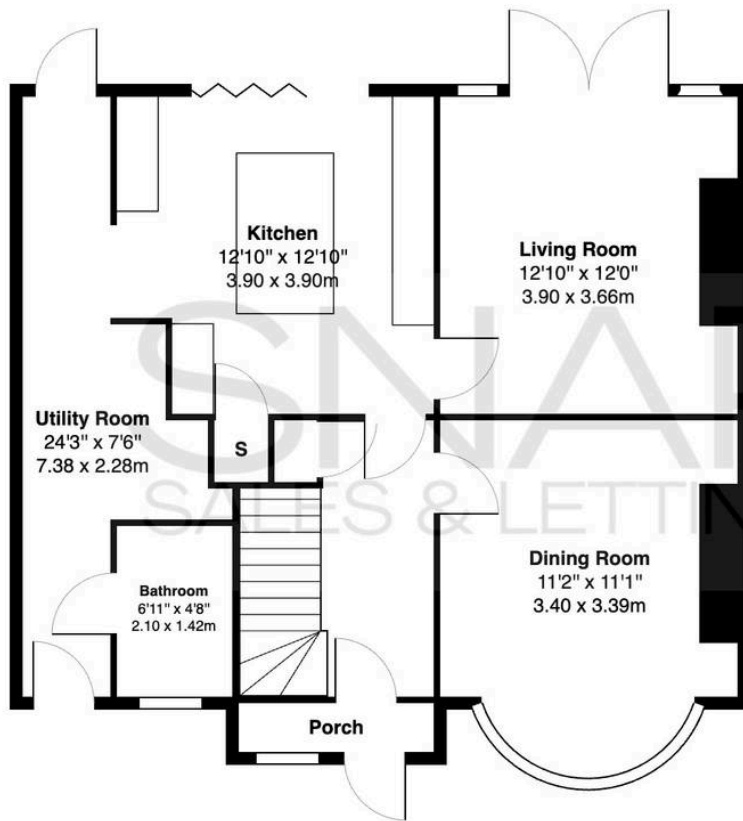
WC

Shower Room

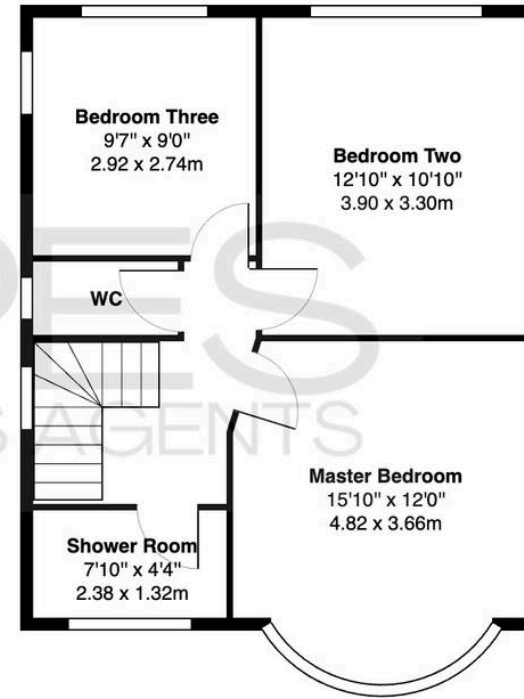
4' 4" x 7' 10" (1.32m x 2.38m)







Ground Floor
Approximate Area: 738 ft² ... 68.5 m²



First Floor
Approximate Area: 503 ft² ... 46.8 m²

Approximate Total Area: 1241 ft² ... 115.3 m²

All measurements are approximate.
The floorplan may not include chimney breasts or support nibs and/or very small recess areas.
If a total floor area is quoted, this will include ALL areas shown on the plan, inc garages.
The area is calculated by the software and is approximate.

Cheadle Hulme Office

Andrew Snape Estate Agents, 31 Station Road – SK8 5AF

0161 485 2244 • cheadlehulme@snapes.co.uk • www.snapes.co.uk/