



Beulah Hill, SE19 | £700,000

02087029999

newhomes@pedderproperty.com

pedder
NEW HOMES

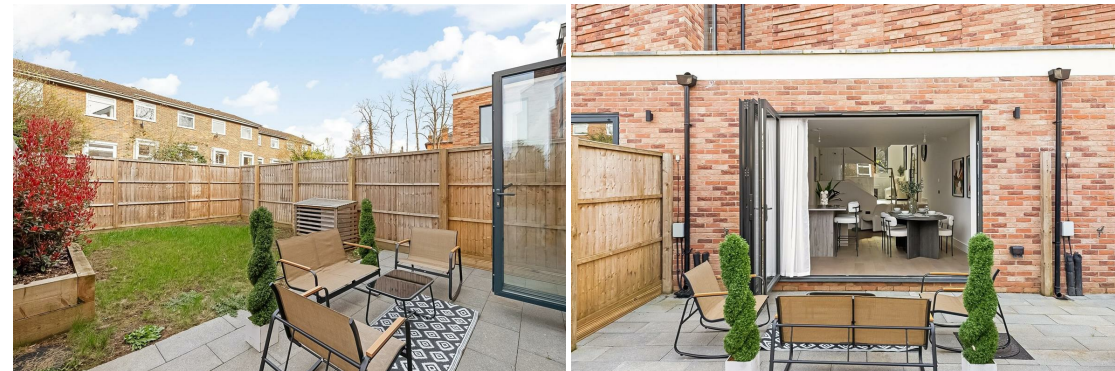


In General

- Prices from £700,000
- Freehold House
- Brand New Development
- Off-Street Parking
- 10-year Build Warranty
- Luxury Appliances
- Close to transport links
- Private Garden
- Underfloor Heating
- Solar Panels

In Detail

Hermitage Place is a collection of 3-bedroom family homes, with private gardens and off-street parking. Prices from £700,000 - £725,000

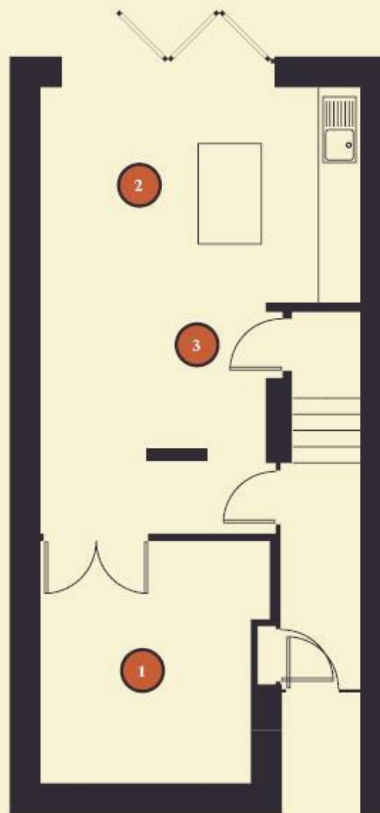


Floorplan

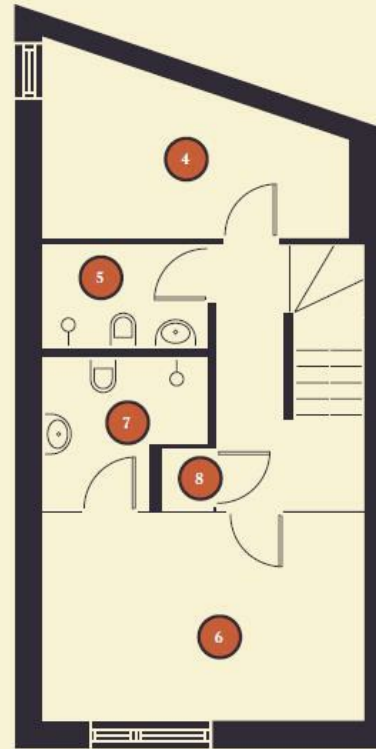
House 2,3,4,5,6

117m² / 1259ft²

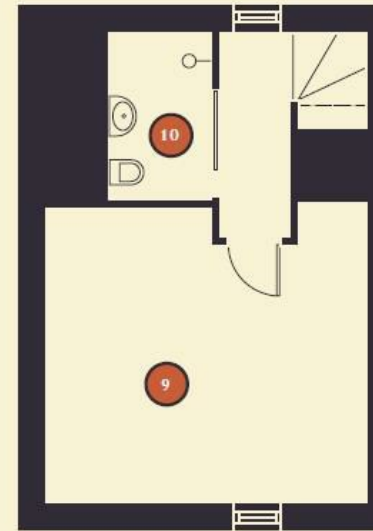
3 Bedroom Town Houses
Private Rear Garden
Parking



GROUND FLOOR



FIRST FLOOR



SECOND FLOOR

1	Sitting Room	11.10 m ²
2	Kitchen / Dining	23.60 m ²
3	Services	2.54 m ²
4	Bedroom 1	10.06 m ²
5	Bathroom 1	3.76 m ²
6	Bedroom 2	14.32 m ²
7	Bathroom 2 (Ensuite)	5.02 m ²
8	Storage	0.71 m ²
9	Bedroom 3	10.06 m ²
10	Bathroom 3 (Ensuite)	10.06 m ²

Energy Efficiency Rating	Current	Pin
Very energy efficient - lower running costs		
102 plus) A		
81-101) B		
69-80) C		
55-68) D		
39-54) E		
21-38) F		
1-20) G		
Not energy efficient - higher running costs		
England & Wales	EU Directive 2002/91/EC	

94

Pedder Property Ltd trading as Pedder for themselves and for the vendor/landlord of this property whose agents they are, give notice that (1) these particulars do not constitute any part of an offer or contract, (2) all statements contained within these particulars are made without responsibility on the part of Pedder or the vendor/landlord, (3) whilst made in good faith, none of the statements contained within these particulars are to be relied upon as a statement of representation or fact, (4) any intending purchaser/tenant must satisfy him/herself by inspection or otherwise as to the correctness of each of the statements contained within these particulars, (5) the vendor/landlord does not make or give either Pedder or any person in their employment any authority to make or give representation or warranty whatsoever in relation to this property.