



## Osier Crescent, N10

£1,650 Per calendar month

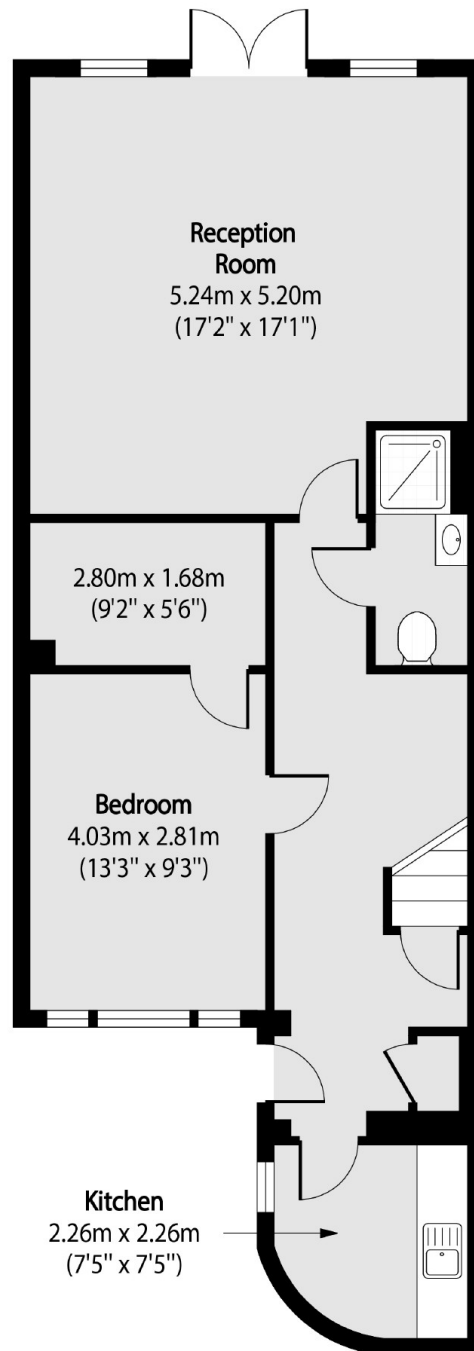
An impressive one bedroom flat with access to a large private garden and off street parking set within a modern development. The property has a private entrance, separate kitchen, bathroom with shower, double bedroom and spacious reception room.

Osier Crescent is situated within easy reach of shops and amenities in Muswell Hill with excellent green spaces including Alexandra Park close by. The development is within catchment areas for outstanding schools.

### Features

- One Double Bedroom
- Access to Garden
- Private Parking
- Separate Kitchen
- Spacious Reception Room
- Muswell Hill

Osier Crescent,  
London, N10



Total area (approx): 66.27 sq m (713 sq. ft)