



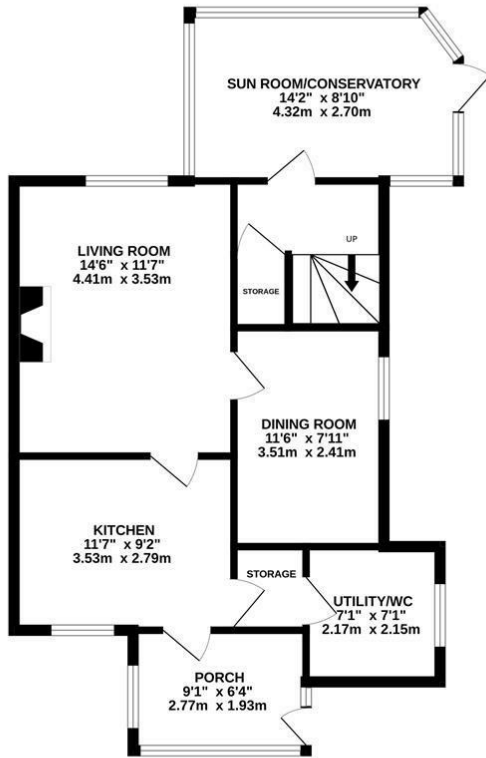
Railway Cottages, St. Leonards-On-Sea TN38 0AW

Offers in excess of £380,000

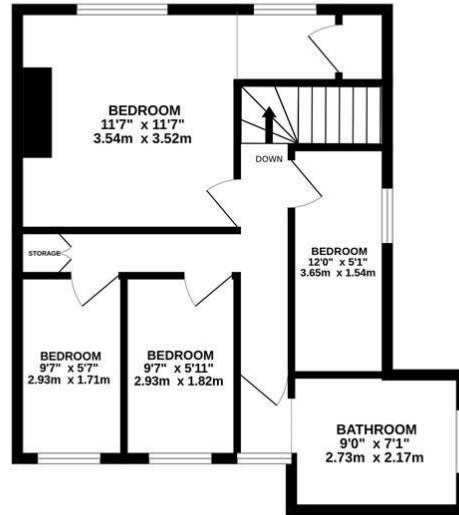


A stylish FOUR BEDROOM SEMI-DETACHED HOUSE with STUNNING SEA VIEWS located in an idyllic position just a SHORT STROLL FROM THE SEAFRONT and within immediate reach of South Saxons Nature Reserve, local schools, transport links and West. St. Leonards mainline railway station. Accessed via a porch, the accommodation here is arranged as a SPACIOUS LIVING ROOM enjoying a feature fireplace with a LOG BURNER, SEPARATE DINING ROOM and kitchen, which is fitted with CONTEMPORARY UNITS offering ample worktop and storage space and leads through to the SEPARATE UTILITY plus W/C. At the rear of the property there is a SUN ROOM/CONSERVATORY which benefits from wraparound COASTLINE VIEWS and access to the garden. The four DOUBLE BEDROOMS are located on the first floor, with the primary enjoying FAR REACHING VIEWS and a BUILT-IN WARDROBE, together with the FAMILY BATHROOM with bath and shower over. Externally, the garden is of a real feature here offering an area of decking, perfect for alfresco dining, and an EXPANSE OF LAWN boarded by mature shrubs and trees. There is also a BUILT-IN OUTDOOR SAUNA. Presented to a high standard throughout, this property would make the perfect family home or seaside retreat and is not to be missed.

GROUND FLOOR
666 sq.ft. (61.9 sq.m.) approx.



1ST FLOOR
494 sq.ft. (45.9 sq.m.) approx.



TOTAL FLOOR AREA: 1160 sq.ft. (107.8 sq.m.) approx.

Whilst every attempt has been made to ensure the accuracy of the floorplan contained here, measurements of doors, windows, rooms and any other items are approximate and no responsibility is taken for any error, omission or mis-statement. This plan is for illustrative purposes only and should be used as such by any prospective purchaser. The services, systems and appliances shown have not been tested and no guarantee as to their operability or efficiency can be given.
Made with Metropix ©2026

