



OAKFIELD



Saxon Road, Hastings  
£1,350 Per Calendar Month



3



1



2



C

# SUMMARY

---

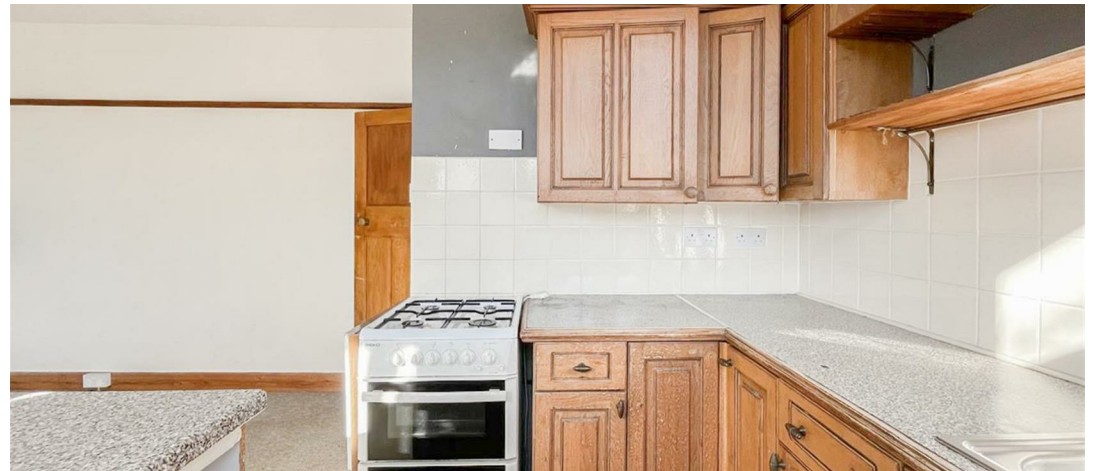
Nestled in the sought-after Clive Vale area, this traditional three-bedroom home is full of charm and character. Ideally located close to excellent schools and transport links, the property offers a wonderful blend of period features and comfortable family living.

From the moment you enter, the welcoming hallway sets the tone, with exposed floorboards and a natural wood staircase that create a warm, calming feel which flows beautifully throughout the home.

The living room features a lovely bay window and an original brick chimney breast with an open fire and hearth – a stunning focal point that perfectly complements the stripped floorboards, picture rail, and original doors.

To the rear, the spacious kitchen–diner overlooks the garden. The kitchen is fitted with matching base and wall units and provides space for freestanding appliances, with a door leading directly to the rear garden. The dining area offers another attractive fireplace and chimney breast, maintaining the property's character while remaining light and airy with pleasant views of the trees outside.

Upstairs, the home continues to impress with a family bathroom featuring a bath with shower over, WC, and wash hand basin. The master bedroom includes a beautiful feature fireplace, while bedroom two is a generous double room enjoying views to the front of the property. The third bedroom or study is a versatile space that benefits from a stained glass



window over the door, adding an extra touch of period charm.

Minimum tenancy term 6 months

Available soon - the house will be painted and cleaned internally before the tenancy starts

Annual income threshold £40,500



**Living Room**

10'5" x 9'7"

**Dining Room**

10'8" x 10'5"

**Kitchen**

8'3" x 5'1"

**Bedroom One**

10'0" x 9'10"

**Bedroom Two**

**Bedroom Three**

6'9" x 5'4"

**Bathroom**

5'10" x 5'6"

Council Tax Band B - £2,081.78 pa from April 2026













# INFORMATION

---

## Local Authority

Hastings Borough Council

## Council Tax Band

**B**

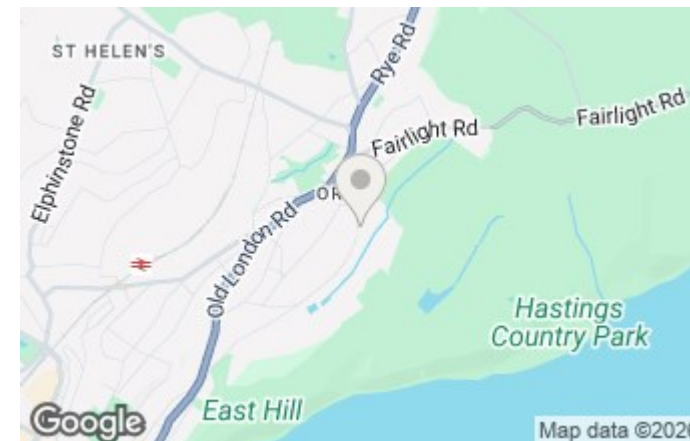
## Opening Hours

Monday to Friday	9.00am - 5.30pm
Saturday	9.00am - 4.00pm

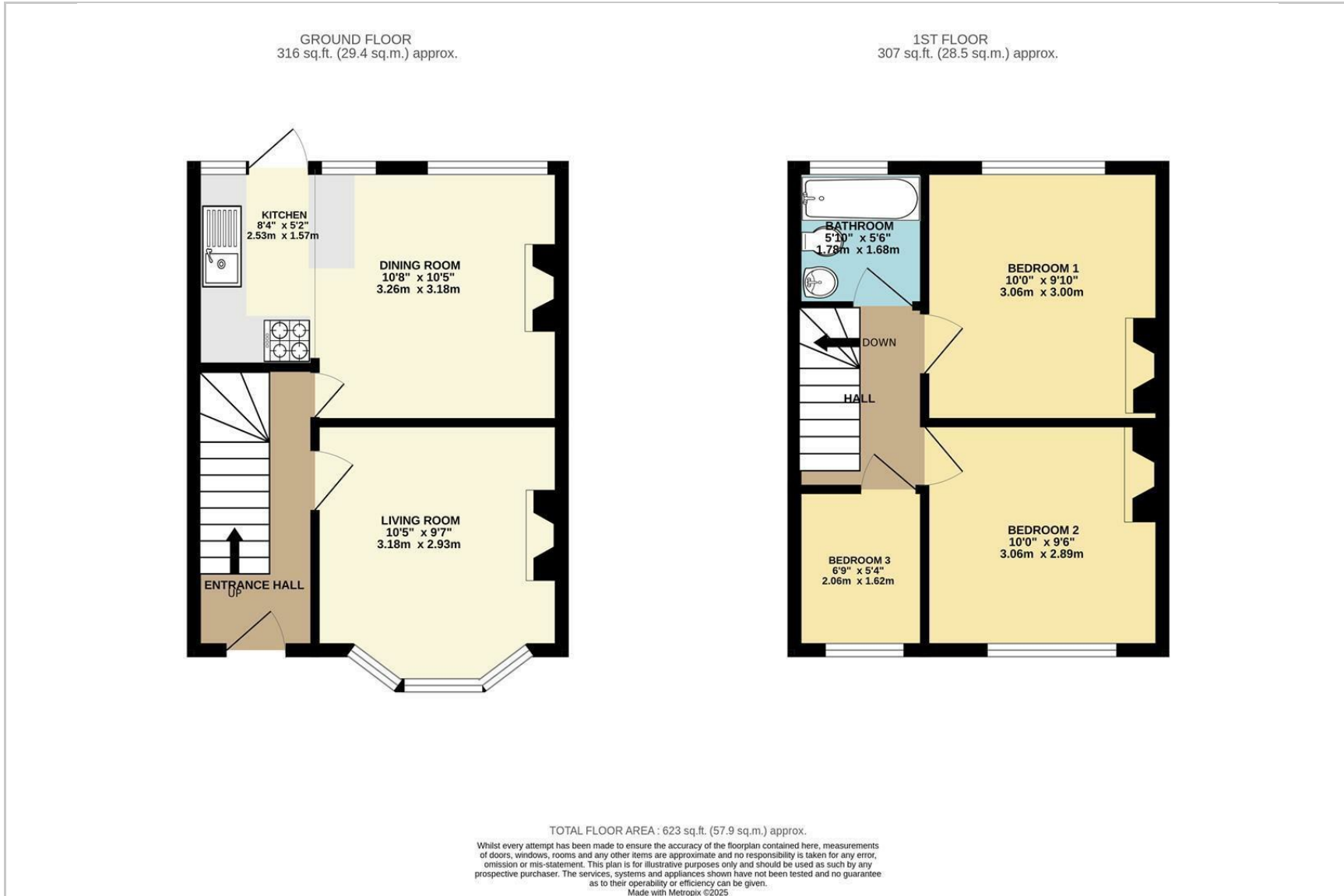
## Viewings

Please contact us on 01424 446644 if you wish to arrange a viewing appointment for this property or require further information.

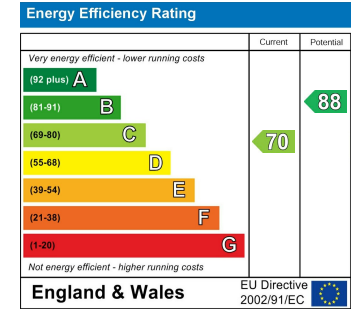
## Area Map



# Floorplan



# Energy Efficiency Graph



These particulars, whilst believed to be accurate are set out as a general outline only for guidance and do not constitute any part of an offer or contract. Intending purchasers should not rely on them as statements of representation of fact, but must satisfy themselves by inspection or otherwise as to their accuracy. No person in this firm's employment has the authority to make or give any representation or warranty in respect of the property.