



# Bristol SU Lettings

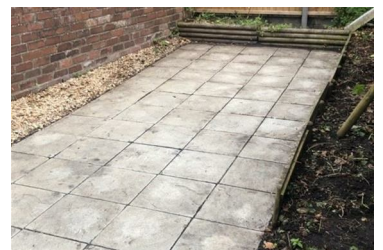


15 Oxford Street, Kingsdown, BS2 8HH

£5,775 Per Month



Bristol SU Lettings are delighted to offer this spacious student house very close to Uni. The property has 7 Bedrooms (6 doubles and 1 single), 2 bathrooms, large open plan living area and access to enclosed rear garden. Gas Central heating and with the residents parking zone. Rent excludes bills. Available 21st July 2026 for a 12 month contract.



- 7 bed Student House
- 6 Double bedrooms & 1 Single
- 2 Bathrooms
- Within RPZ
- Rent Excludes Bills
- Terrace
- 1 Large Reception room
- Gas Central Heating
- Deposit 1 Months Rent
- Available 21st July 2026