



**POOLE
TOWNSEND**

Strawberry Cottage, Back Road, Lindale, Grange over Sands

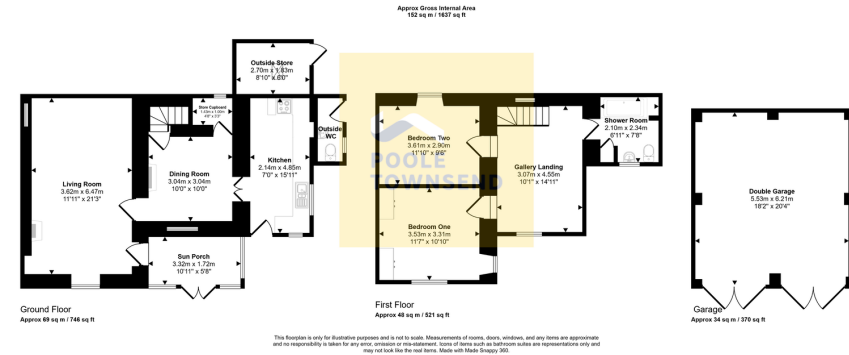
£550,000

🛏 2 🚿 1 🛋 2



- Situated in the heart of the Lake District National Park.
- Surrounded by expansive lawned gardens, mature trees, and a natural waterway.
- The kitchen features wraparound units and a seamless connection to the garden.
- Includes a double garage, ample off-road parking, an outbuilding, and an outside fire.
- Council Tax E
- Combines charming stone-built architecture with contemporary amenities.
- Includes a bright living room with a gas fire, sun porch, and a formal dining room.
- A gallery landing with a vaulted ceiling leading to two large double bedrooms and a study.
- Established borders with plenty of outdoor space, providing both tranquillity and views.
- Early viewing recommended.





Nestled in the heart of the Lake District National Park, this charming stone-built property blends traditional character with modern comfort. Surrounded by extensive lawned gardens, mature trees, and a natural waterway, the home offers a peaceful retreat. The ground floor features a bright living room with gas fire, flowing into a sun porch and formal dining room with exposed timber beams. The kitchen, with wraparound units, connects seamlessly to the gardens. Upstairs, a galleried landing with vaulted ceiling leads to two generous double bedrooms and a stylish shower room. Externally, the property includes a detached double garage, ample off-road parking, an outbuilding, and an outside WC. With established borders and plenty of outdoor space, this home offers both tranquillity and convenience.

Visit us at
www.pooletownsend.co.uk
enquiries@pooletownsend.co.uk

We are open
 Monday – Friday 9.00 – 5.00
 Saturday 9.00 – 1.00

Barrow 01229 811811
 Ulverston 01229 588111
 Grange 015395 33316
 Kendal 01539 734455
 Milnthorpe 015395 62044