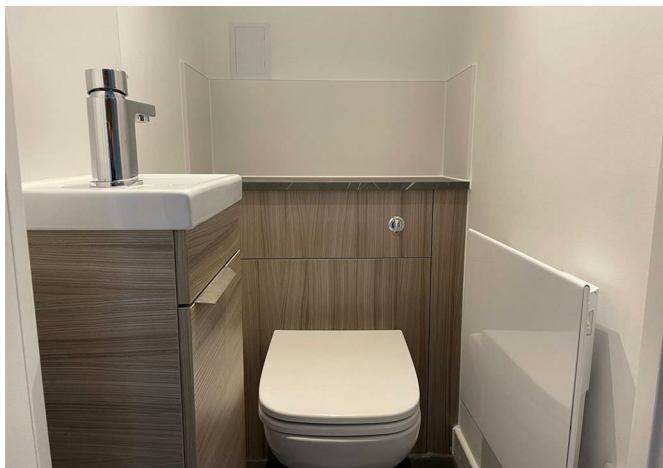
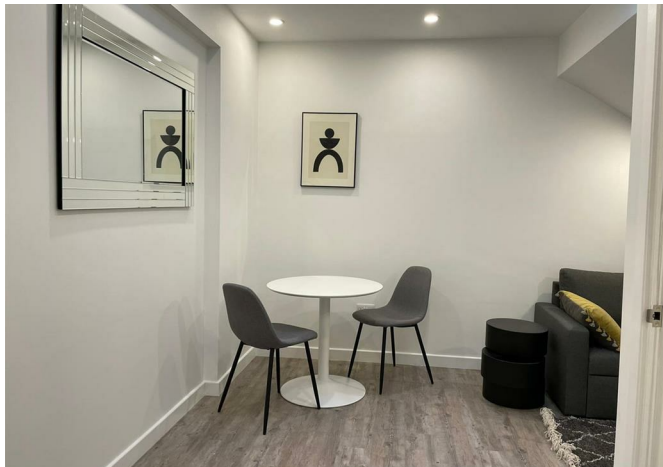




35 Wraysbury House 4-16 London Road, Staines-Upon-Thames, London, TW18 4BP

£1,425 Per month



35 Wraysbury House 4-16 London Road, Staines-Upon-Thames, London, TW18 4BP

£1,425 Per month

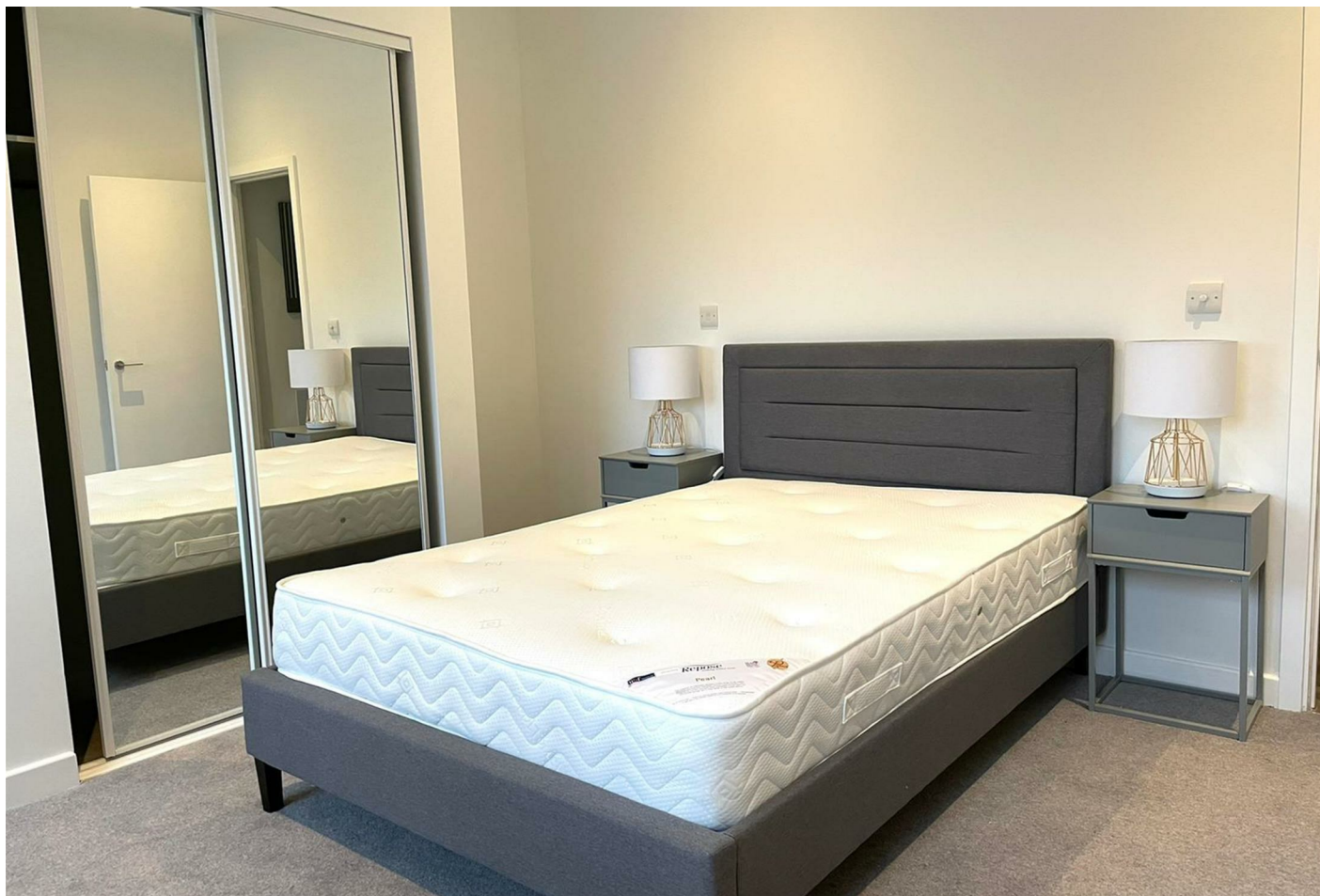
New to the market, this well presented, furnished duplex apartment is located in the popular Wraysbury House development.

The property benefits from an entrance hall with WC leading to lower level large double bedroom with luxury ensuite bathroom, stairwell with large storage cupboard leading to upper floor open plan living area, stylish grey kitchen with breakfast bar and integrated appliances, neutral decoration throughout and secure entry-phone access.

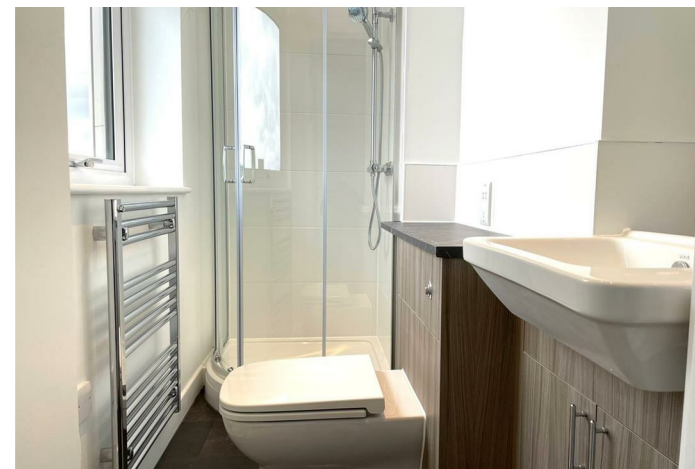
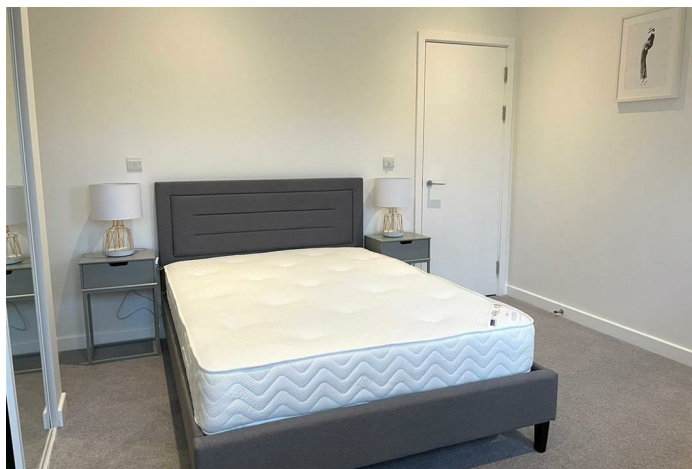
This apartment comes with one secure underground parking space.

Wraysbury House is well located, just a five minute walk from Staines town centre and the mainline railway station. The M25 is just a 5 minute drive away, offering easy access to Heathrow Airport.

Description



Situation

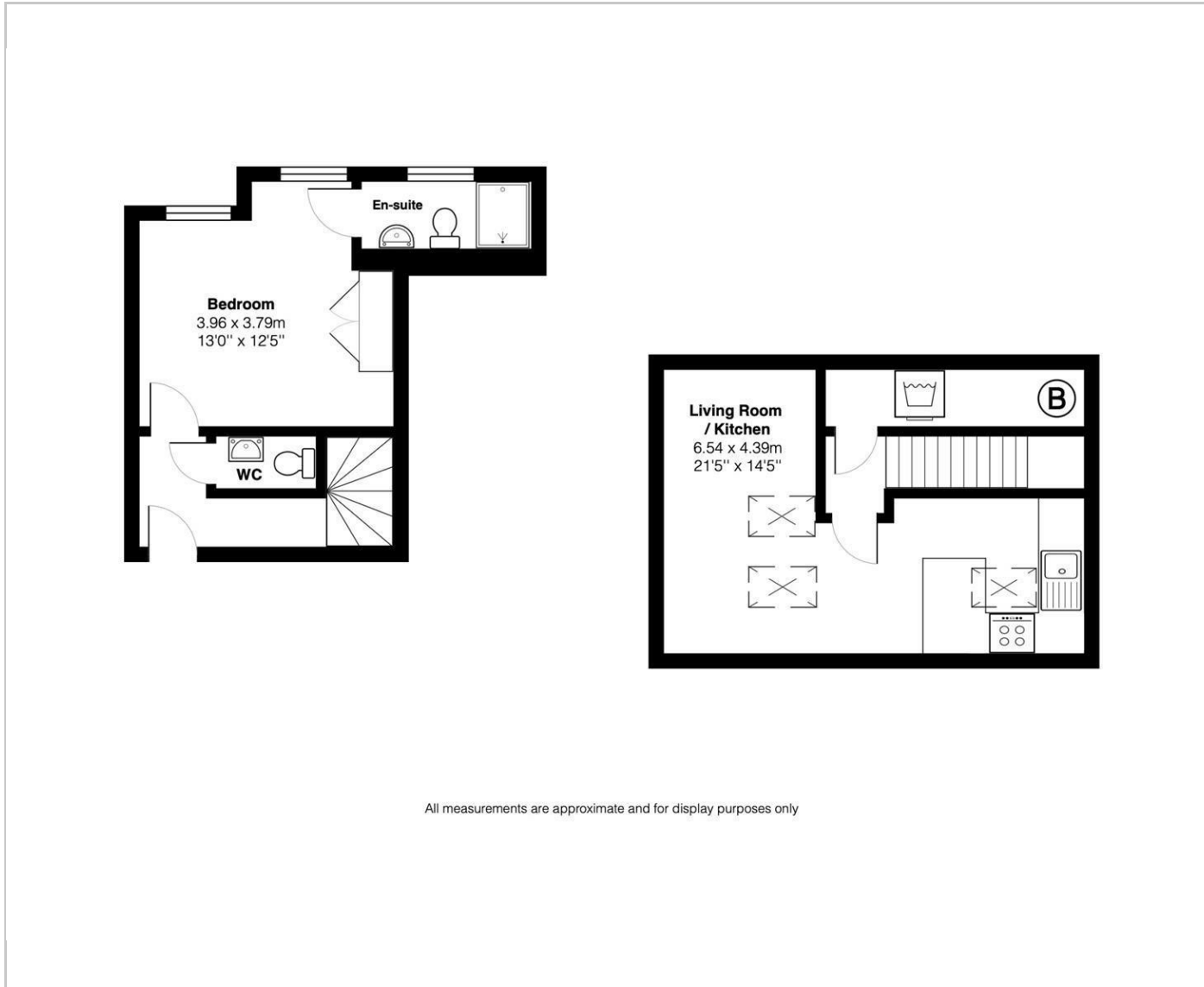


Furnished

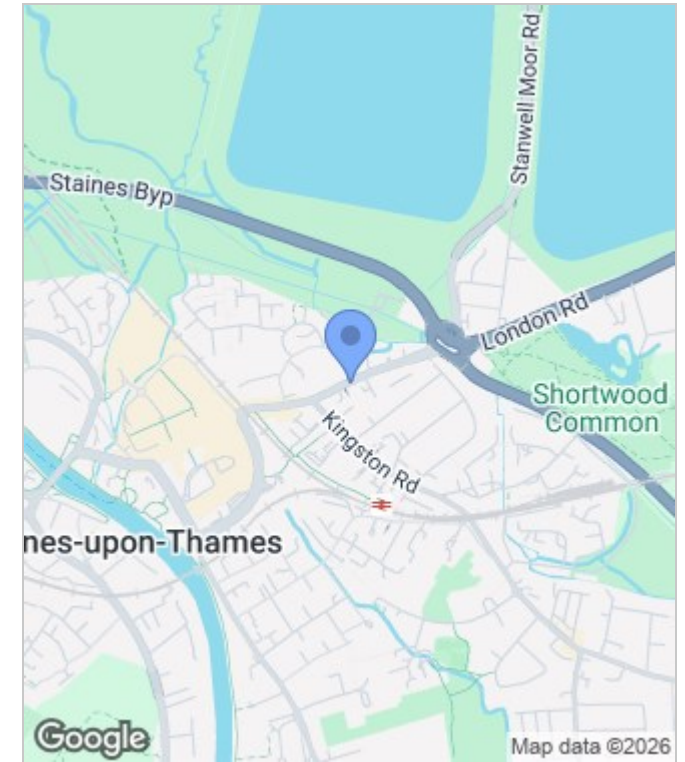
Council Tax Band: C

Available: 3rd April 2026

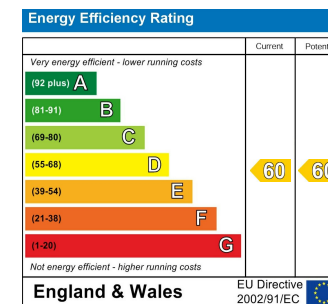
Floor Plans



Area Map



Energy Performance Graph



These particulars, whilst believed to be accurate are set out as a general outline only for guidance and do not constitute any part of an offer or contract. Intending purchasers should not rely on them as statements of representation of fact, but must satisfy themselves by inspection or otherwise as to their accuracy. No person in this firm's employment has the authority to make or give any representation or warranty in respect of the property.