



Kingswood Road, W4

£575,000

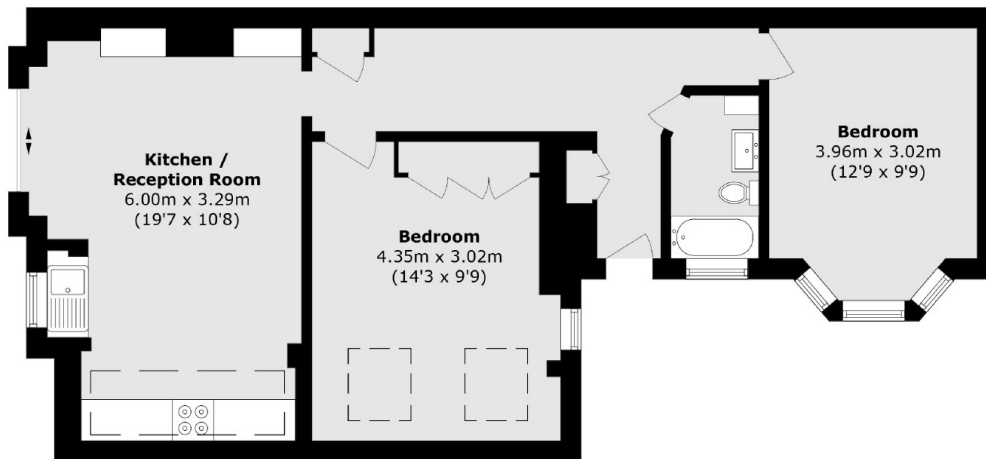
A charming ground floor, two double bedroom maisonette. Benefiting from its own private entrance, long lease and private patio garden.

Kingswood Road is located within half a mile of Chiswick Park (District) and South Acton (Overground) underground stations. The property is also close to local amenities and bus links on Acton Lane and Chiswick High Road. Local schools and green spaces are also close by.

Features

- Maisonette
- Ground Floor
- Two Double Bedrooms
- Private Garden
- Modern Finish
- Long Lease

Kingswood Road, London, W4



Total area (approx.): 65.2 sq. m (701.8 sq. ft)

Dexters

Chiswick
388 Chiswick High Road
London
W4 5TF
Sales
020 8995 4321

Energy Rating: . We aim to make our particulars both accurate and reliable. However they are not guaranteed; nor do they form part of an offer or contract. If you require clarification on any points then please contact us, especially if you're traveling some distance to view. Please note that appliances and heating systems have not been tested and therefore no warranties can be given as to their good working order.

 **RICS** | Regulated
Estate Agent
and Letting Agent

[dexters.co.uk](https://www.dexters.co.uk)