



Devonshire Street, W1W

£3,000 Per calendar month

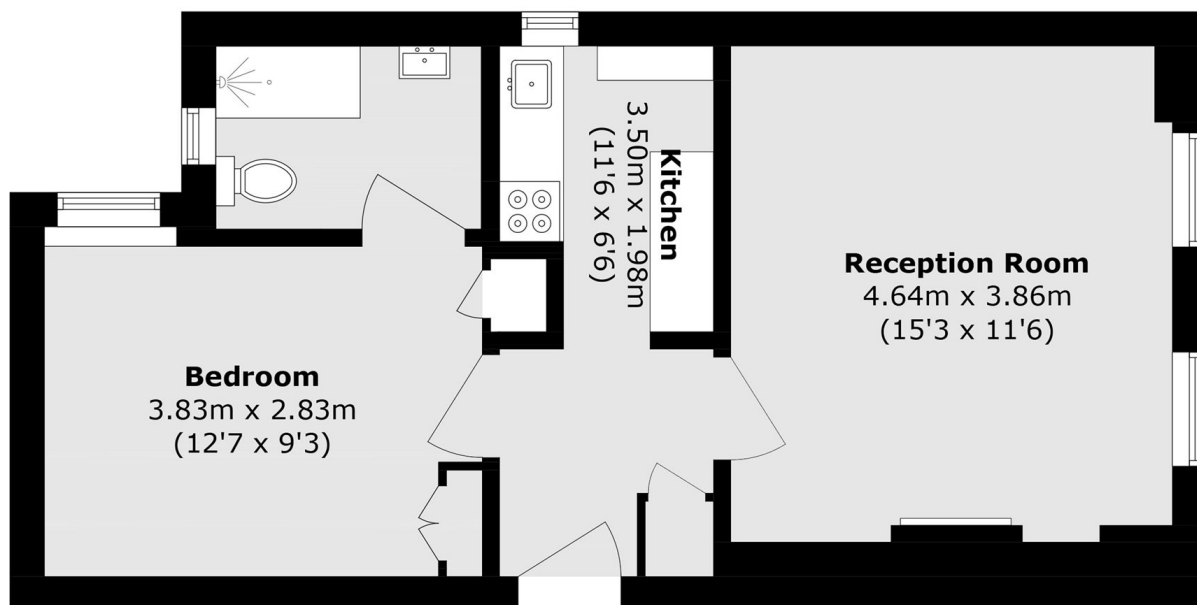
A one bedroom apartment located on the raised ground floor of a residential apartment block with a porter. The reception room large enough to accommodate a dining table has two large windows and a polished wood floor. There is a modern kitchen with integrated appliances. The bedroom has built in wardrobes and opens to the modern shower room.

Located between Regents Park and Marylebone High Street. Local stations are Regents Park, Great Portland Street and Oxford Circus.

Features

- One Bedroom
- Reception Room
- Modern Fitted Kitchen
- Shower Room
- Wood Floors
- Portered Block

Devonshire Street, London, W1W



Ground Floor

Total area (approx.): 43.3 sq. m (466.0 sq. ft)