



*jordan fishwick*

FALLOWFIELD  
Rosedale Road



## Rosedale Road, Fallowfield, M14 7BX

Guide Price £300,000

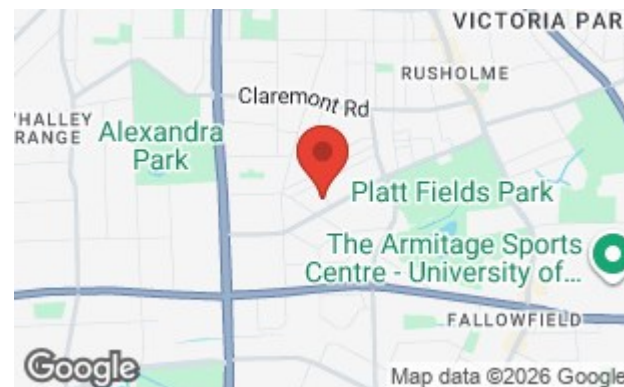


### The Property

A light and spacious terraced property 823 sq ft, boasting GENEROUS GARDENS to both the front and rear, located on a quiet residential road with easy access to Withington, Fallowfield and Manchester City Centre. Platt Fields Park and Wilmslow Road offering a number of amenities are both within a few minutes walk. This property would be suitable for a number of purchasers including the first time buyer or growing family and the accommodation comprises: Entrance hall, with tiled flooring, lounge with period style fire surround, large dining kitchen with solid wooden worktops. To the first floor there are three good size bedrooms, bathroom with white suite and separate shower cubicle. Gas central heating via a newly installed boiler, double glazing and off road parking completes the impressive specification. Viewing recommended.

### Directions

M14 7BX



- A three bedroom terraced property
- Lounge & large dining kitchen
- Large gardens front & rear
- Double glazing & gas central heating are both installed
- Popular residential location
- Close to Platt Fields Park
- Ideal first time purchase
- Off road parking

**Postcode** - M14 7BX

**EPC Rating** - D

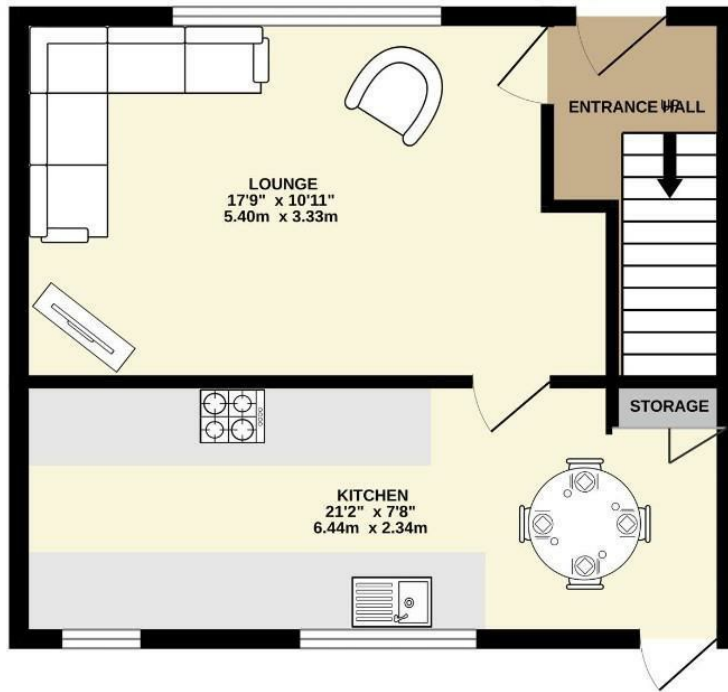
**Floor Area** - 823.00 sq ft

**Local Authority** - Manchester City Council

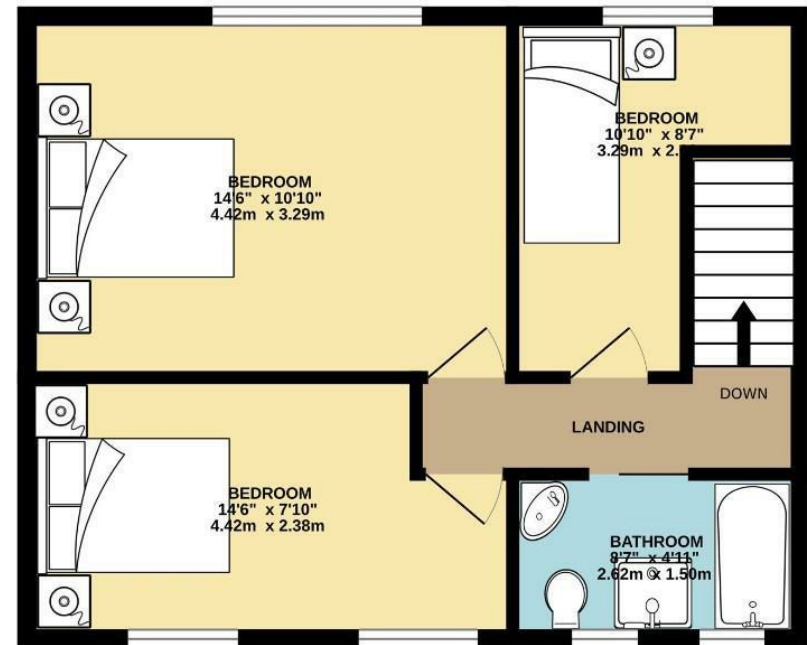
**Council Tax** - A



GROUND FLOOR  
393 sq.ft. (36.5 sq.m.) approx.



1ST FLOOR  
430 sq.ft. (39.9 sq.m.) approx.



TOTAL FLOOR AREA : 823 sq.ft. (76.4 sq.m.) approx.

Measurements are approximate. Not to scale. Illustrative purposes only  
Made with Metropix ©2026



These particulars are believed to be accurate but they are not guaranteed and do not form a contract. Neither Jordan Fishwick nor the vendor or lessor accept any responsibility in respect of these particulars, which are not intended to be statements or representations of fact and any intending purchaser or lessee must satisfy himself by inspection or otherwise as to the correctness of each of the statements contained in these particulars. Any floorplans on this brochure are for illustrative purposes only and are not necessarily to scale.

Offices also at: Wilmslow, Macclesfield, Hale, Sale, Chorlton, Glossop, Manchester & Salford

757-759 Wilmslow Road, Didsbury Village, Manchester

0161 445 4480

didsbury@jordanfishwick.co.uk  
www.jordanfishwick.co.uk