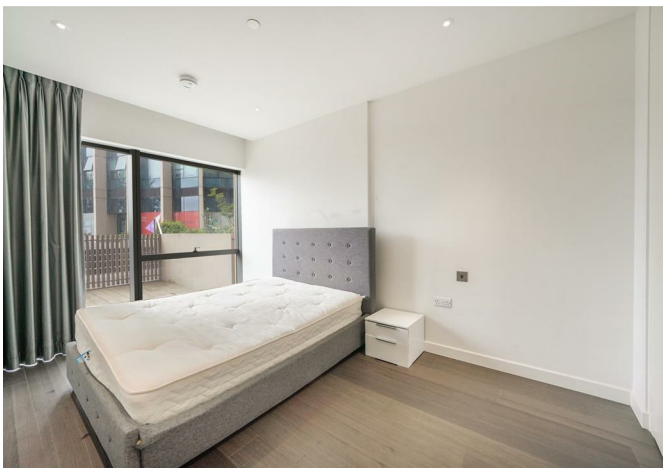




Flat G2, 10 Cutter Lane, London, SE10 0XX  
**£525 Per Week**



## Flat G2, 10 Cutter Lane, London, SE10 0XX

**£525 Per Week**

Nestled in the vibrant heart of London on Cutter Lane, this modern apartment offers a perfect blend of contemporary living and urban convenience. Built in 2019, this new build property spans an impressive 556 square feet, providing ample space for comfortable living.

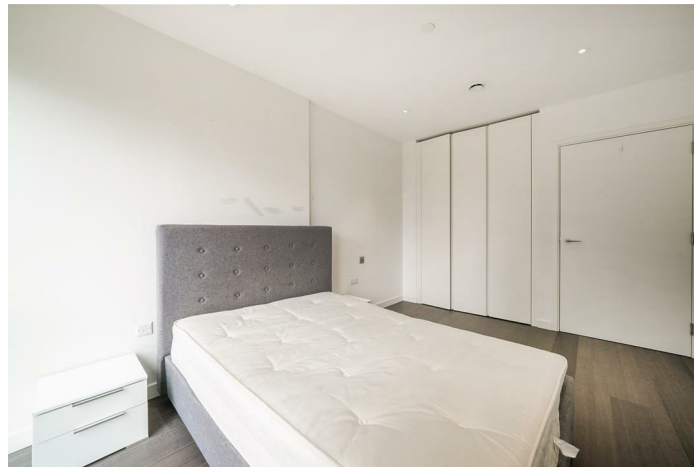
The apartment features a well-appointed reception room, ideal for relaxation or entertaining guests. The single bedroom is designed to be a tranquil retreat, while the bathroom is fitted with modern fixtures, ensuring a pleasant experience.

With its prime location, residents will enjoy easy access to a plethora of local amenities, including shops, restaurants, and public transport links, making it an excellent choice for those seeking a dynamic city lifestyle. This property is perfect for first-time buyers or investors looking to capitalise on the thriving London market.

## Description

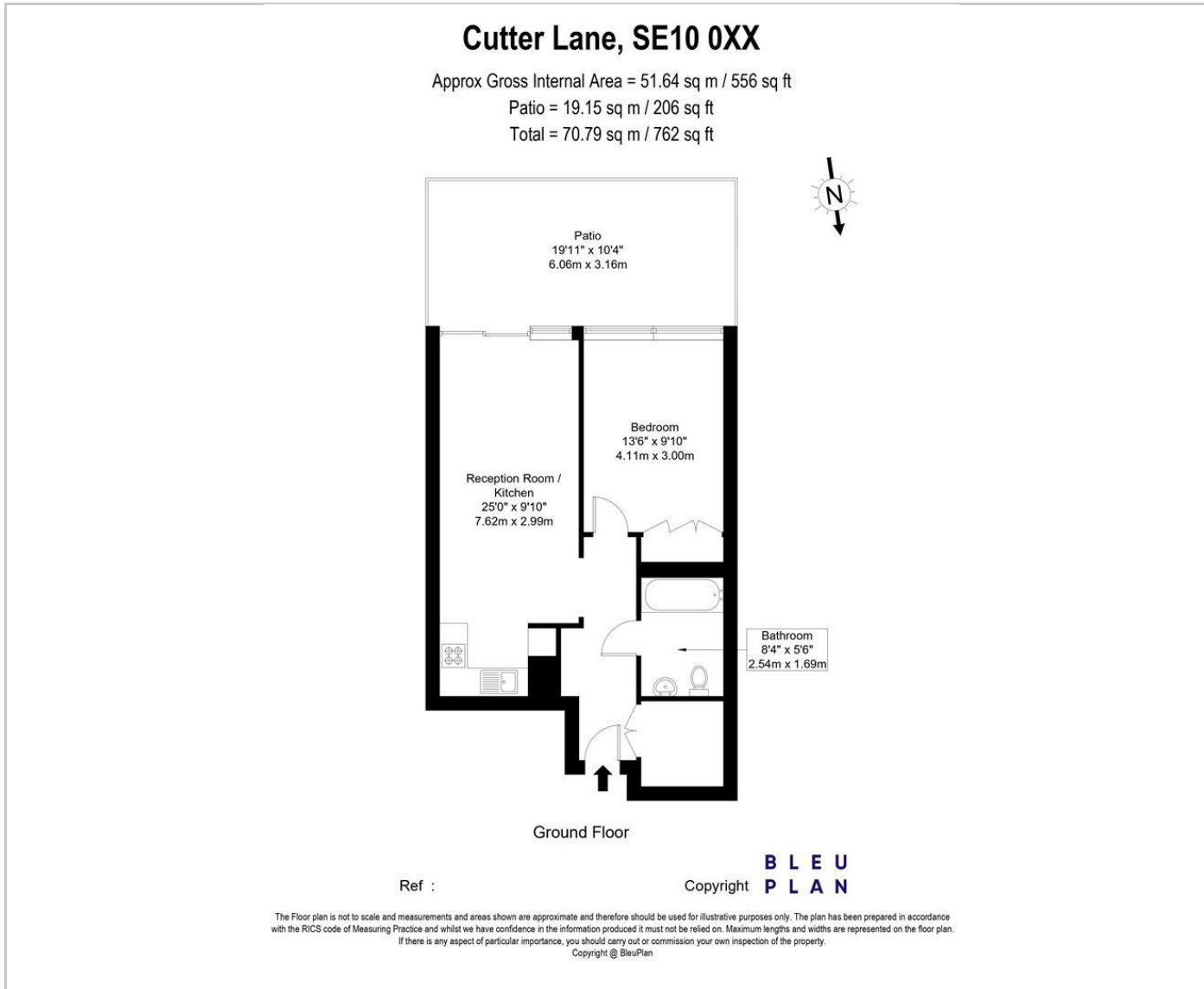


## Situation

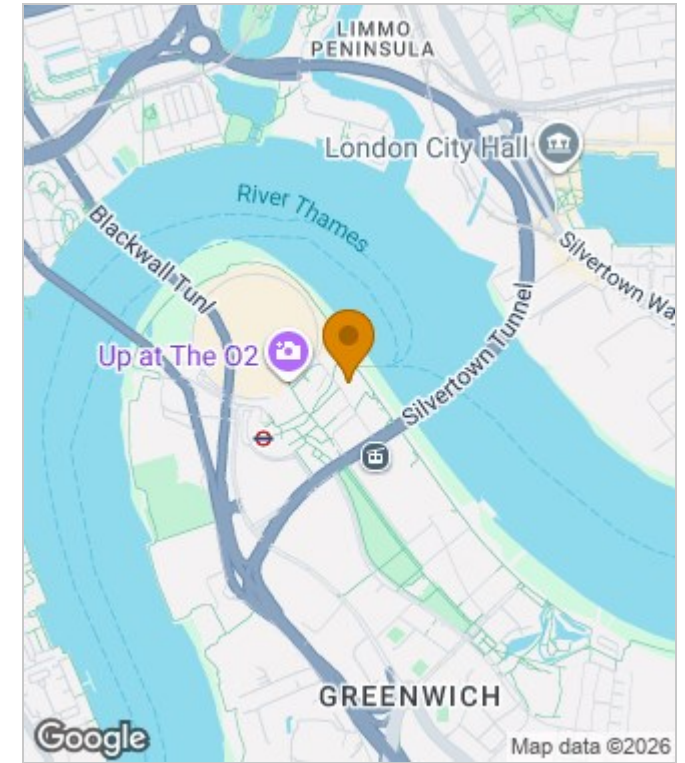


Furnished  
Council Tax Band: D  
Available: 27th July 2026

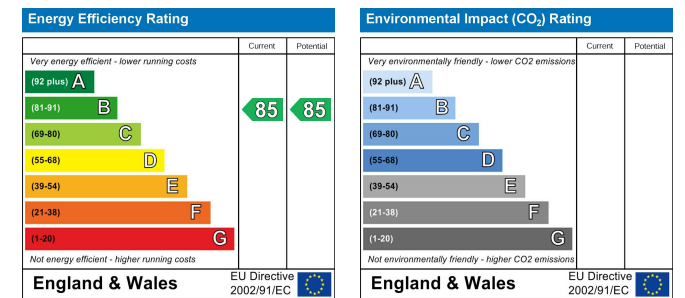
## Floor Plans



## Area Map



## Energy Performance Graph



These particulars, whilst believed to be accurate are set out as a general outline only for guidance and do not constitute any part of an offer or contract. Intending purchasers should not rely on them as statements of representation of fact, but must satisfy themselves by inspection or otherwise as to their accuracy. No person in this firm's employment has the authority to make or give any representation or warranty in respect of the property.