



## Gainsborough Road, TW9

### £595,000

An opportunity to acquire this well presented first floor conversion apartment, offering 765 sq ft of well-designed living space. The property benefits from a share of the freehold, no onward chain, and off street parking.

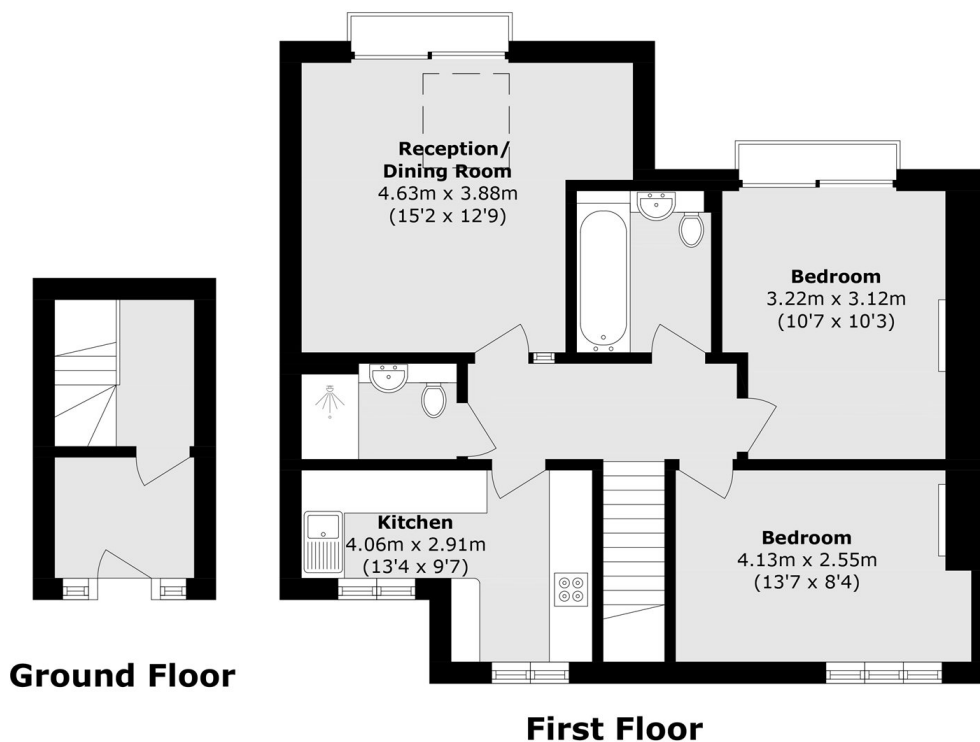
The property is entered via it's own ground floor front door with vestibule and staircase leading to the first floor. The accommodation comprises two double bedrooms, two modern bathrooms, a separate kitchen and vaulted reception room with Juliet balcony.

Gainsborough Road is ideally located for the Royal Botanic Gardens Kew, the Thames Path, and Kew Village. The commuter is equally well catered for with Kew Gardens station close to hand, offering the district line and overground, as well as excellent bus services to Central London.

### Features

- Two Bedrooms
- Two Bathrooms
- First Floor Flat
- Off Street Parking
- Share of Freehold
- No Onward Chain

# Gainsborough Road, Kew, TW9



Total area (approx.): 71.1 sq. m (765.3 sq. ft)