



## 50 King Edward VII Apts, Kings Drive, Midhurst, GU29 0EX

Offers In The Region Of £375,000





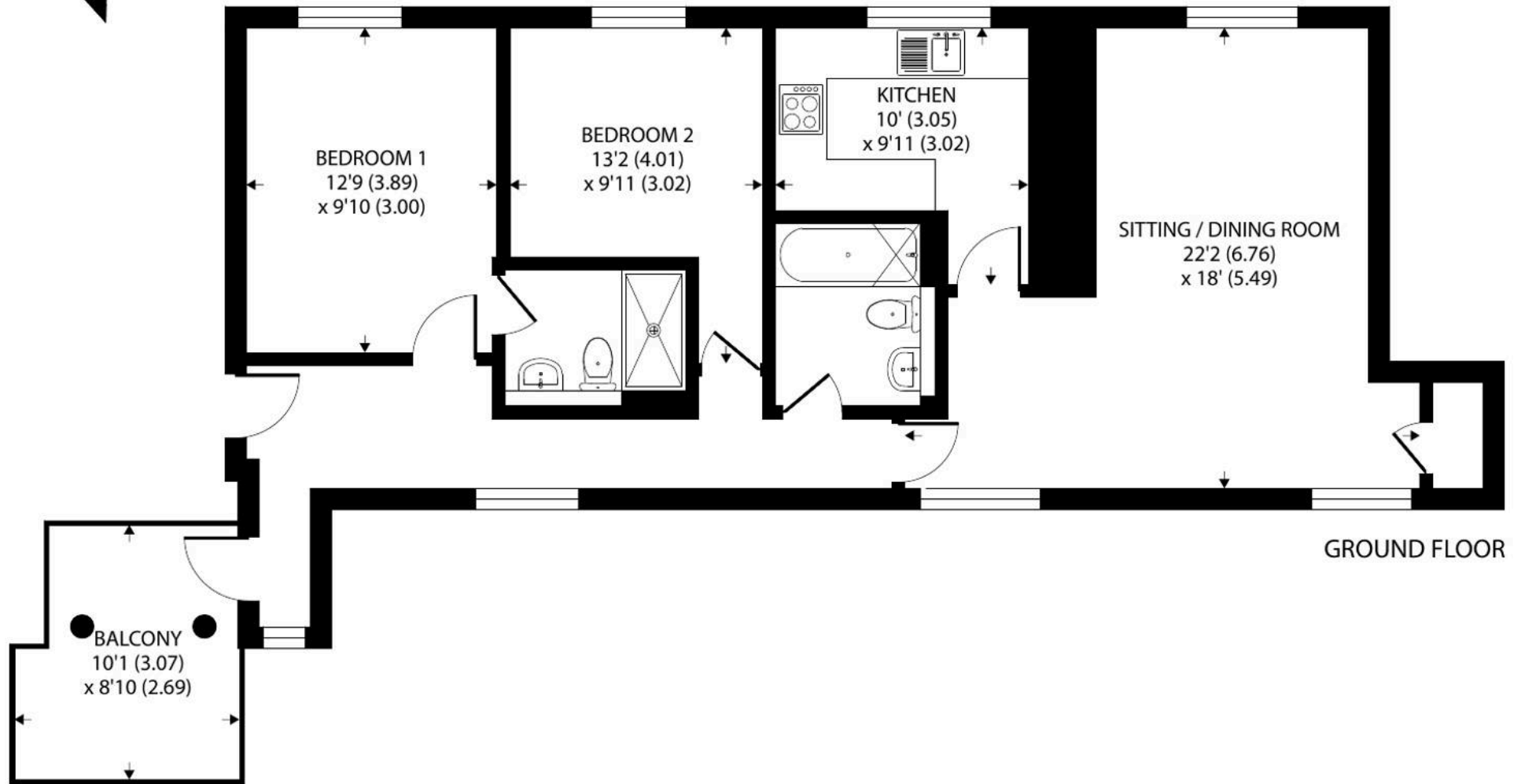
## 50 King Edward VII Apartments Kings Drive

Leasehold / 165 Years / Council Tax Band: D

- Two Bedrooms / Two Bathrooms
- Service Charge: 4,500pa
- On-Site Buildings Manager
- Private Balcony
- On-Site Facilities - Pool & Gym
- High Specification Finish
- Communal Gardens & Rooms
- Dual Aspect Apartment

Located in the heart of the spectacular South Downs National Park, the King Edward VII estate offers contemporary luxury living. The elegant Grade II\* Listed building was commissioned by King Edward VII in the Arts and Crafts style, and completed in 1906. Now superbly restored to provide elegant spaces to live, relax and socialise in. Onsite facilities include two lovely communal lounges, a swimming pool, a gym and a guest suite all set within 165 acres of historic gardens and grounds. No.50 is situated in an enviable position on the top floor of the development, providing a sense of privacy and seclusion. Having been loved and looked after, this beautiful apartment is in immaculate condition, offering a smooth transition to a luxurious lifestyle. The entrance hall is spacious and welcoming, with a large window that floods the area with natural light. The hallway leads to a bright and airy open plan living and dining area, with a modern kitchen that is fully equipped with all the necessary appliances. The living area is tastefully decorated with neutral tones and modern furnishings, creating a warm and inviting atmosphere. The two bedrooms are both generously sized and benefit from plenty of natural light. The principle bedroom is particularly impressive, with a large window that overlooks a charming courtyard and a luxurious en-suite bathroom. The second bedroom is also well-proportioned and has access to the main bathroom. The apartment also benefits from two underground parking spaces and a private balcony.





## King Edward VII Apartments, Kings Drive, Midhurst

Approximate Area = 825 sq ft / 76.6 sq m

For identification only - Not to scale



Floor plan produced in accordance with RICS Property Measurement Standards incorporating International Property Measurement Standards (IPMS2 Residential). © nichecom 2023. Produced for Henry Adams. REF: 992993



## Henry Adams – Midhurst

Henry Adams, Bepton Court, 2 West Street – GU29 9NF

01730 817370 • [midhurst@henryadams.co.uk](mailto:midhurst@henryadams.co.uk) • [www.henryadams.co.uk/](http://www.henryadams.co.uk/)

Agents Note – Our particulars are for guidance only and are intended to give a fair overall summary of the property. They do not form part of any contract or offer, and should not be relied upon as a statement or representation of fact. Measurements, areas and distances are approximate only. Photographs may include lifestyle shots and pictures of local views.