

Fords.

SALES | LETTINGS | NEW HOMES

Highwood Avenue High Wycombe HP12 4LS



Highwood Avenue High Wycombe HP12 4LS

Asking price £490,000

A beautifully presented four-bedroom semi-detached home with a professionally designed & fully landscaped rear garden.

Description

Situated on the sought-after Highwood Avenue, this substantial four-bedroom family home offers over 1,500 sq ft of versatile living accommodation, complemented by a superb, detached summer house/home office and generous living space arranged over three floors.

The ground floor features an impressive 25ft dual-aspect living space, providing a generously sized front reception/sitting room to the front of the property, and dining room to the rear. The large kitchen is complemented by a dedicated breakfast room area as well as a convenient ground floor cloakroom.

On the first floor are three well-proportioned bedrooms all of which feature built-in wardrobes, including a generous principal bedroom and a further double bedroom, together with a recently renovated family bathroom. The second floor provides an additional spacious double bedroom with useful eaves storage, making it ideal as a guest suite, teenager's room or dedicated workspace.

Stepping outside you will find the beautifully landscaped garden which has been thoughtfully designed to create a stylish and tranquil outdoor retreat. A contemporary split-level layout features expansive porcelain terraces, a raised decked entertaining area, and decorative stone borders. The impressive garden room offers the perfect space for a home office, studio, or relaxation area. Ideal for both entertaining and unwinding, this exceptional outdoor space seamlessly combines practicality with luxury. The property further benefits from a front lawn as well as ample driveway parking for three cars.

Offering flexible accommodation throughout and ample space for a growing family, this attractive home enjoys a desirable residential setting with excellent access to local amenities, schools and transport links.

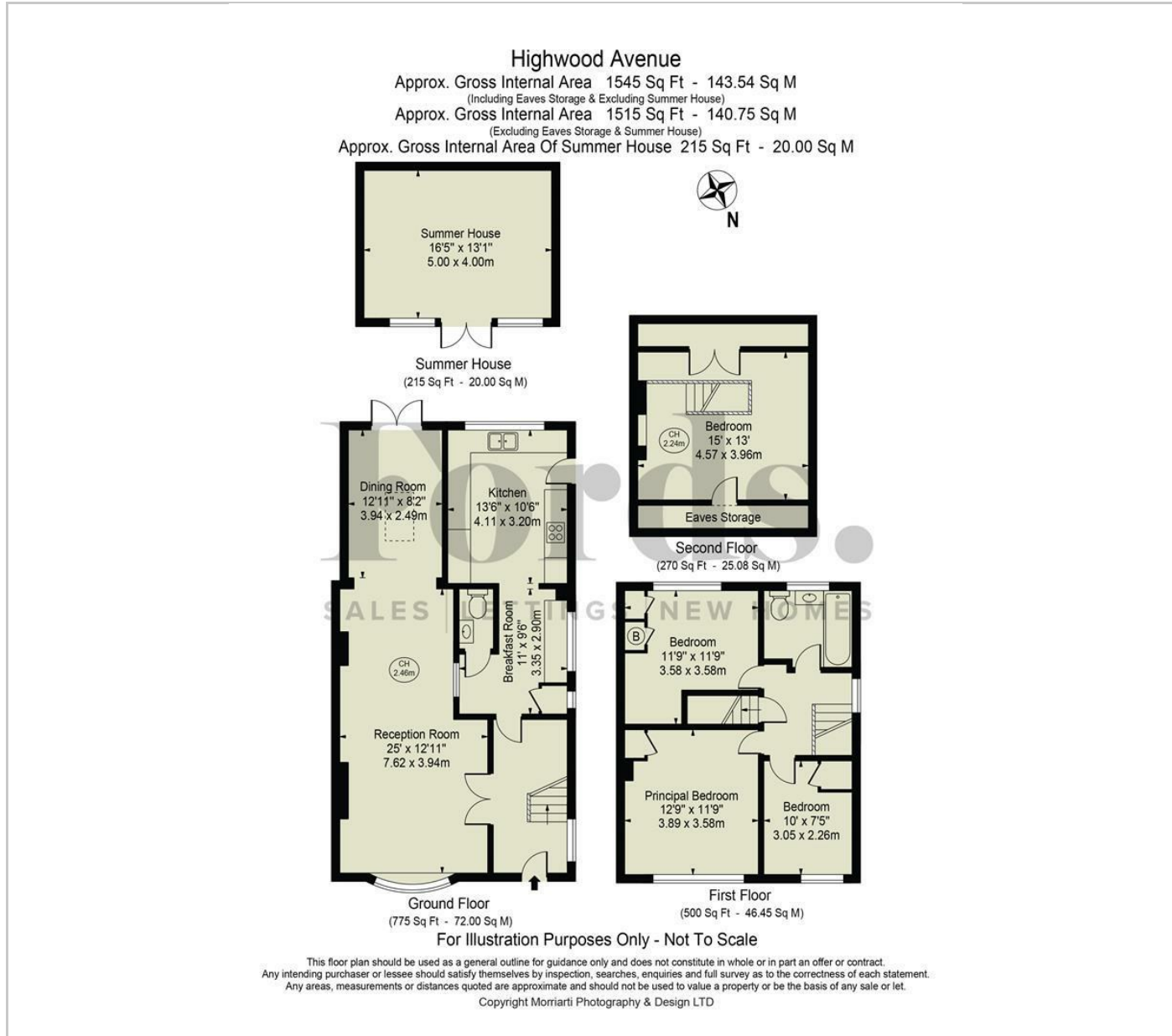


Situation

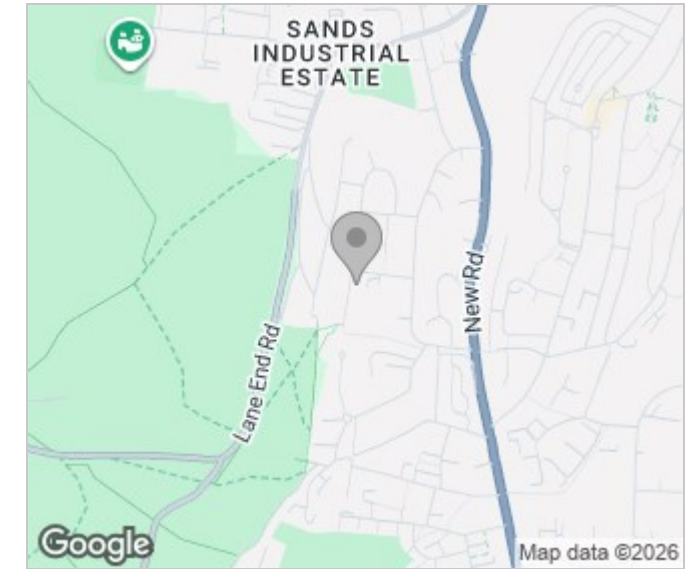
Highwood Avenue is a popular residential road situated to the east of High Wycombe, offering convenient access to a range of local amenities, highly regarded schools and transport links. The area is well served by nearby shopping facilities, supermarkets and leisure amenities, while High Wycombe town centre provides a wider selection of retail, dining and entertainment options. For commuters, High Wycombe railway station offers regular services to London Marylebone, and the property enjoys easy access to the M40 (Junctions 3 and 4), making it an excellent location for families and professionals alike. The property benefits from woodlands just a few hundred meters away, and the surrounding Chiltern countryside also provides an abundance of scenic walks and outdoor recreational opportunities.



Floor Plans



Area Map



Energy Performance Graph

