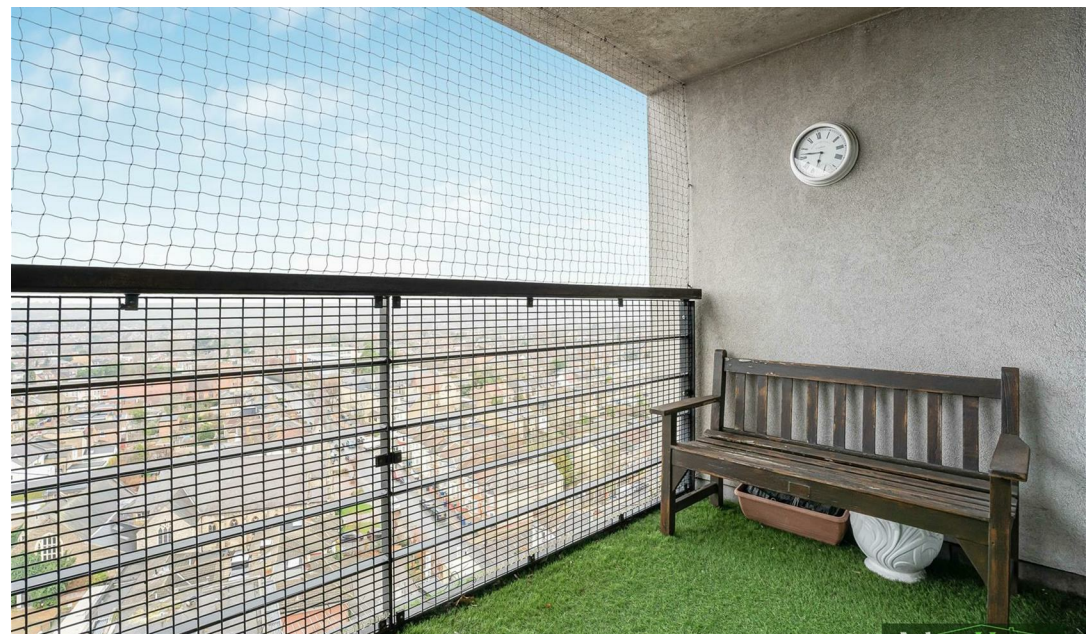




Kingsway, North Finchley, N12

 2 Bedrooms  2 Bathrooms  1 Reception


Guide Price £375,000



Adam Hayes - North Finchley Office - Sales 365 Ballards Lane, North Finchley, London, N12 8LL
Tel: 020 8445 4008 Email: info@adam-hayes.co.uk Web: www.adam-hayes.co.uk

Kingsway, North Finchley, N12

Guide Price £375,000

 2 Bedrooms  2 Bathrooms  1 Receptions

Key Features

- Two Double Bedrooms
- Two Bathrooms (One En-Suite)
- Fourteenth Floor Apartment
- Balcony With Stunning Views
- 24hr Concierge
- Off Street Parking

Nearest Stations

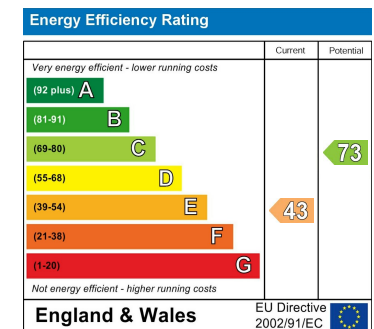
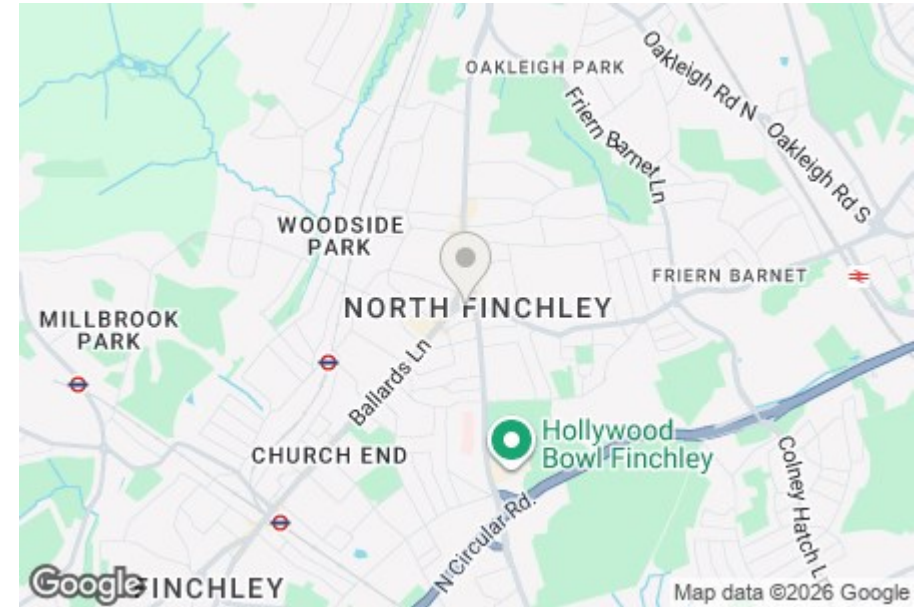
Woodside Park Station 0.5 miles
West Finchley Station 0.5 miles
Finchley Central Station 1.1 miles

Property Description

Situated in this popular lift serviced block in the heart of Tally Ho North Finchley, is this stunning two double bedroom, two bathroom (one en-suite shower) fourteenth floor luxury apartment. The property is offered chain free and benefits from a 24 hour concierge, an approximately 24'7 ft living room with a modern open plan kitchen with integrated appliances, a private balcony with spectacular panoramic views overlooking London and allocated underground parking. Residents can also enjoy being within close proximity to local shops, amenities and transport links. To really appreciate the location, condition and size, an internal viewing is highly recommended via the vendors sole agents Adam Hayes Estate Agents.

Other Information

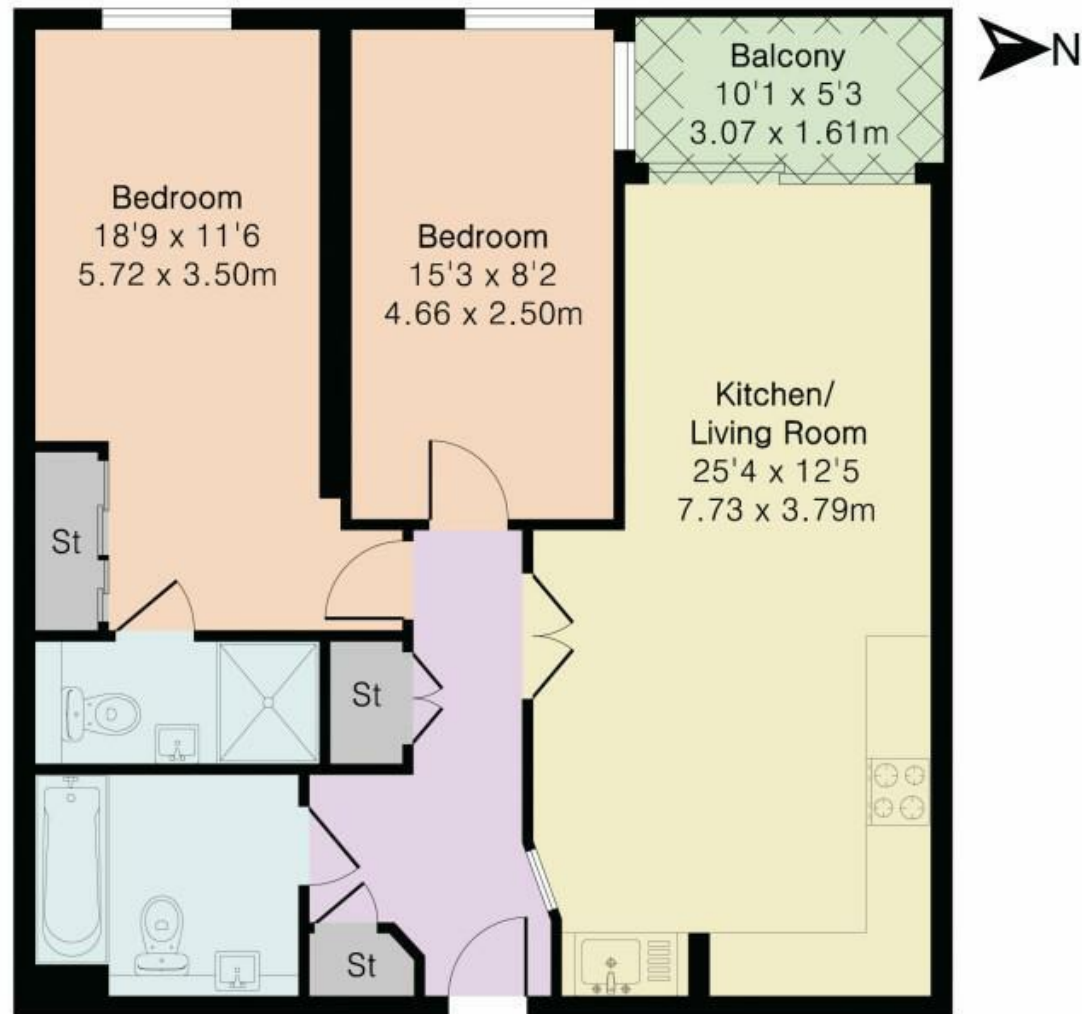
Tenure: Leasehold
Length of Lease: 102 Years
Ground Rent: £200.00 P/A
Service Charge: £5,659.00 P/A
Council Tax Band: D



Adam Hayes - North Finchley Office - Sales 365 Ballards Lane, North Finchley, London, N12 8LL

Tel: 020 8445 4008 Email: info@adam-hayes.co.uk Web: www.adam-hayes.co.uk

Approximate Gross Internal Area 797 sq ft - 74 sq m



Fourteenth Floor

These particulars, whilst believed to be accurate, are set out as a general outline only for guidance and do not constitute any part of an offer or contract. Intending purchasers or prospective tenants should not rely on them as statements or representation of fact, but must satisfy themselves by inspection or otherwise as to their accuracy. We have not carried out a detailed survey, not tested the services, appliances and specific fittings. Room sizes should not be relied upon for carpets and furnishings. The measurements given are approximate. No person in this firm's employment has the authority to make or give any representation or warranty in respect of the property.