



MUNSTER SQUARE, NW1

£450,000

Two double bedrooms
Private balcony
683sqft approx.
Central London location

@marshandparsons
marshandparsons.co.uk

MARSH &
PARSONS



ABOUT THE PROPERTY

This large and well-proportioned, two-bedroom apartment is situated on the fourth floor of a purpose built block. The apartment comprises a spacious, separate reception room with direct access to a great sized, private balcony, a separate eat-in kitchen with ample cupboard and utility space, two double bedrooms with built-in storage space and a bathroom with separate WC. The building is serviced by lift access and a secure entry system.

This apartment is ideal for home buyers, and investors alike. The property has potential to generate an attractive rental income and strong yield due to its proximity to Euston, UCL and Central London.

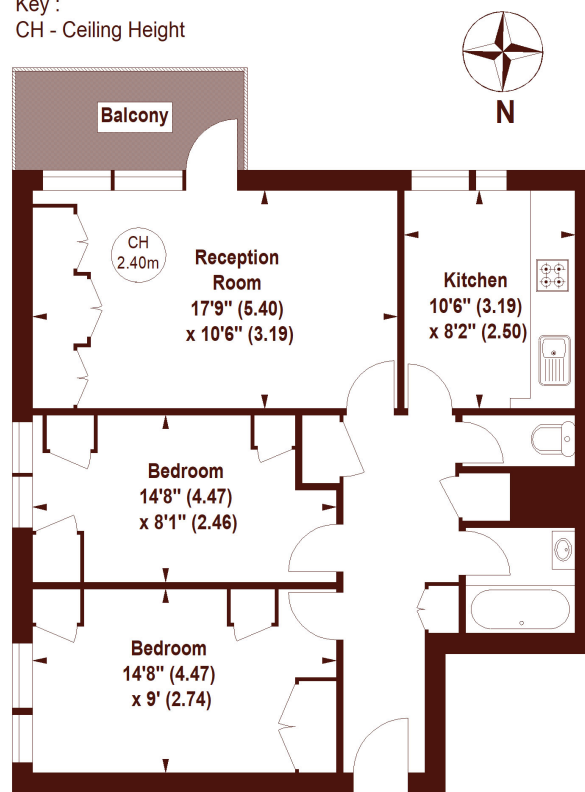


STEP INSIDE MUNSTER SQUARE

The Combe, Munster Square, NW1 3

APPROX. GROSS INTERNAL FLOOR AREA 683 SQFT / 63.45 SQM

Key :
CH - Ceiling Height



FOURTH FLOOR

Not to scale, for guidance only and must not be relied upon as a statement of fact.
All measurements and areas are approximate only

Camden
020 7244 2200

Energy Rating: We aim to make our particulars both accurate and reliable. However, they are not guaranteed; nor do they form part of an offer or contract. If you require clarification on any points then please contact us, especially if you're traveling some distance to view. Please note that appliances and heating systems have not been tested and therefore no warranties can be given as to their good working order

MARSH &
PARSONS