

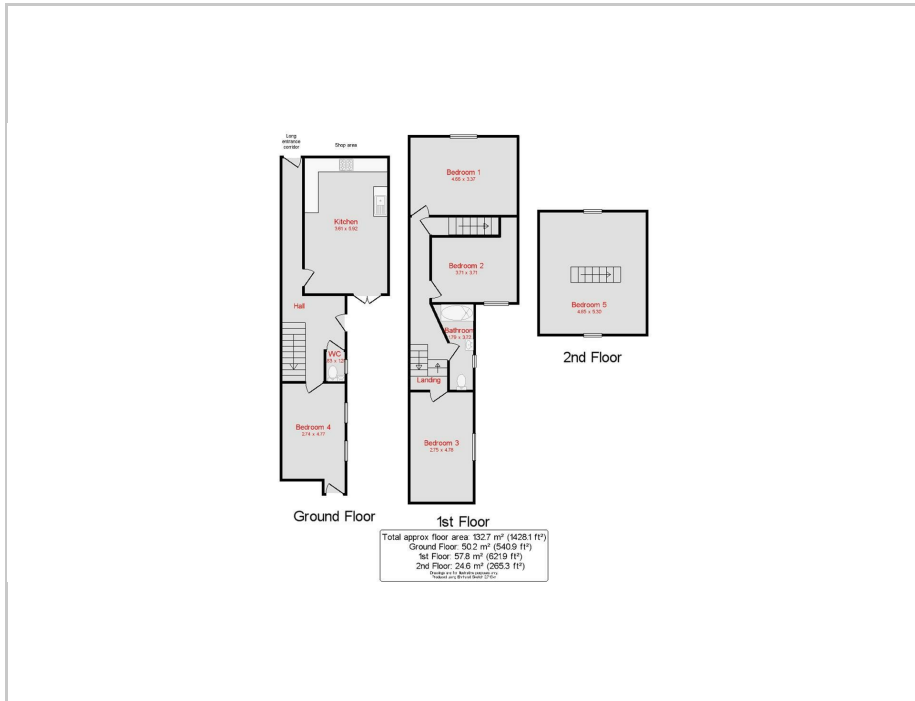


Room 5 (FFM), 87 Marmion Road, Southsea, PO5 2AX

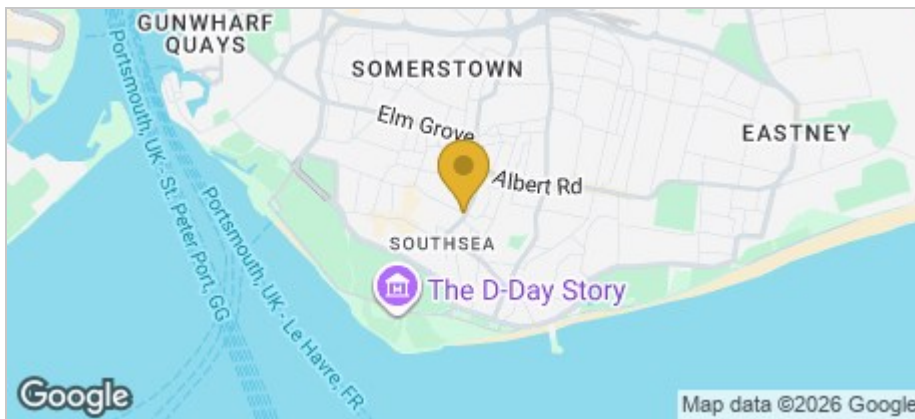
£525 (From) Per Calendar Month Council Tax Band B  5  1  1  E

Tully's

Floor Plan



Area Map



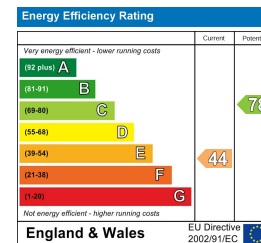
Accommodation

- ****ALL BILLS INCLUDED****
- Marmion road location
- Garden
- Kitchen, Lounge, Diner
- Available Now
- Gas Central Heating
- Rear Garden
- Close to Southsea Shops and Seafront
- Holding deposit - £121.00
- Deposit - £605.00

Viewing

Please contact our Southsea Office on 023 9273 2241 if you wish to arrange a viewing appointment for this property or require further information.

Energy Efficiency Graph



157-159 Albert Road, Southsea, Portsmouth, Hampshire, PO4 0JW
 023 9273 2241 Email: tully@tullyand.co lettings@tullyand.co

Tully's