



**Connells**

Sumatra Crescent  
Bletchley Milton Keynes

# Sumatra Crescent Bletchley Milton Keynes MK3 5GH

for sale offers over  
**£390,000**



## Property Description

Connells are delighted to offer to market this beautifully presented Four-bedroom Fully Detached family home situated in the highly desired area of Newton Leys. This property offers the best of modern living with accommodation situated across three floors allowing for ample internal space. Accommodation comprises entrance hall, kitchen, living/diner and cloakroom on the ground floor. To the first floor you have a bright landing space, three well-proportioned bedrooms and a family bathroom. The second floor hosts a generously sized master bedroom benefitting from an en-suite. Outside there is parking for two cars and a landscaped rear garden.

Newton Leys is a modern area offering access to plenty of local amenities including schools and shops with Asda being located on the development. For those who need to commute, Newton Leys offers easy access to both Bletchley and Leighton Buzzard train stations as well as offering access to road networks such as the M1 and A5.

## Entrance Hall

Entrance hall leading to stairs and doors to Kitchen, Lounge and WC.

## Lounge

16' 1" x 13' 2" ( 4.90m x 4.01m )  
UPVC Patio doors and UPVC window to the rear aspect, Radiator.

## Kitchen

11' 6" x 10' 11" ( 3.51m x 3.33m )  
UPVC window front aspect, Stainless steel sink, Space for cooker, dishwasher, washing machine

## Bedroom Two

11' 1" x 10' 3" ( 3.38m x 3.12m )  
UPVC window to rear, Radiator

## Bedroom Three

10' 4" x 8' 10" ( 3.15m x 2.69m )  
UPVC window to front aspect,  
Radiator

## Master Bedroom

18' 5" x 12' 7" ( 5.61m x 3.84m )  
UPVC window to Front, Radiator, En-suite

## Bedroom Four

11' 1" x 7' 3" ( 3.38m x 2.21m )  
UPVC window to rear, Radiator

## Bathroom

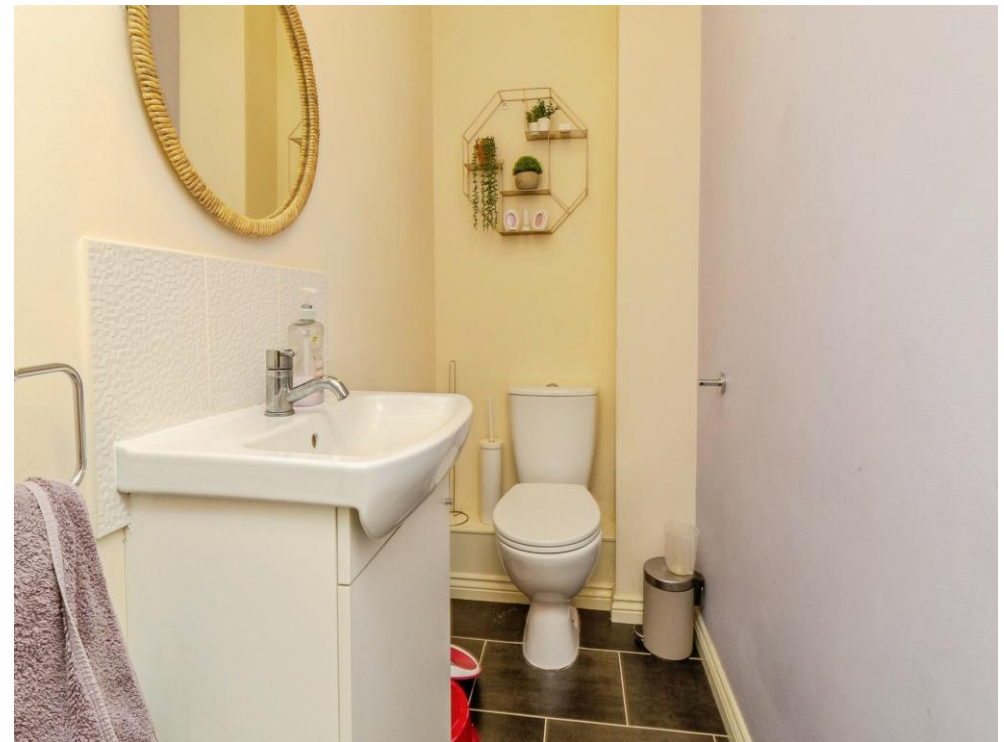
Three piece bathroom suite and radiator

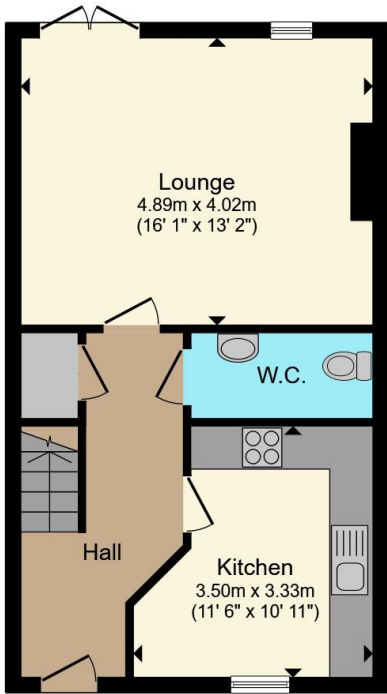
## WC

Toilet and hand sink

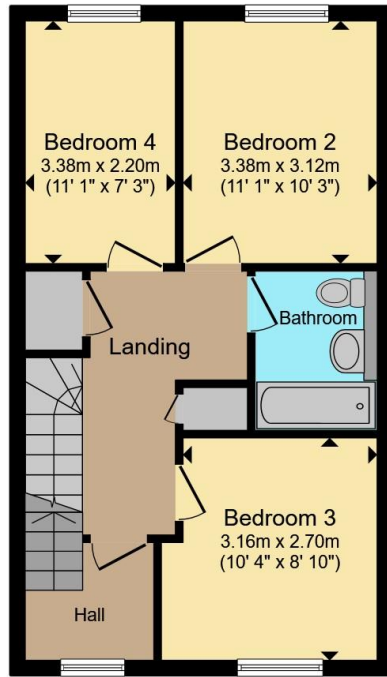
## En-Suite

Shower, Toilet and hand basin

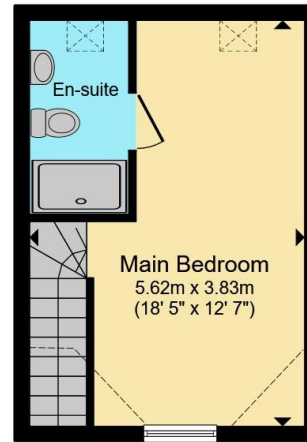




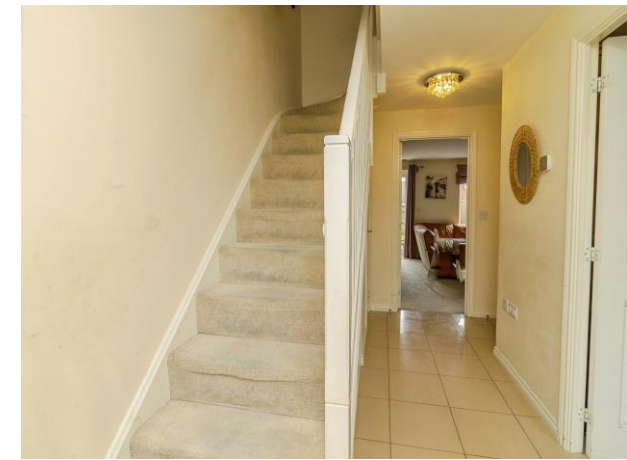
**Ground Floor**



**First Floor**



**Second Floor**



Total floor area 108.7 m<sup>2</sup> (1,170 sq.ft.) approx

This floor plan is for illustrative purposes only. It is not drawn to scale. Any measurements, floor areas (including any total floor area), openings and orientation are approximate. No details are guaranteed, they cannot be relied upon for any purpose and they do not form part of any agreement. No liability is taken for any error, omission or misstatement. A party must rely upon its own inspection(s). Powered by www.propertybox.io



To view this property please contact Connells on

**T 01908 375 241**  
**E [bletchley@connells.co.uk](mailto:bletchley@connells.co.uk)**

188 Queensway Bletchley  
 MILTON KEYNES MK2 2SW

EPC Rating: C Council Tax  
 Band: E

**view this property online [connells.co.uk/Property/BLE311919](http://connells.co.uk/Property/BLE311919)**

Tenure: Freehold



1. MONEY LAUNDERING REGULATIONS Intending purchasers will be asked to produce identification documentation at a later stage and we would ask for your co-operation in order that there will be no delay in agreeing the sale. 2. These particulars do not constitute part or all of an offer or contract. 3. The measurements indicated are supplied for guidance only and as such must be considered incorrect. Potential buyers are advised to recheck measurements before committing to any expense. 4. We have not tested any apparatus, equipment, fixtures, fittings or services and it is in the buyers interest to check the working condition of any appliances.

Connells Residential is registered in England and Wales under company number 1489613, Registered Office is Cumbria House, 16-20 Hockliffe Street, Leighton Buzzard, Bedfordshire, LU7 1GN. VAT Registration Number is 500 2481 05.

**See all our properties at [www.connells.co.uk](http://www.connells.co.uk) | [www.rightmove.co.uk](http://www.rightmove.co.uk) | [www.zoopla.co.uk](http://www.zoopla.co.uk)**

Property Ref: BLE311919 - 0009