



Guide Price
£325,000

Freehold

3x  1x  2x 

**Rochester Street,
Chatham, Kent, ME4**

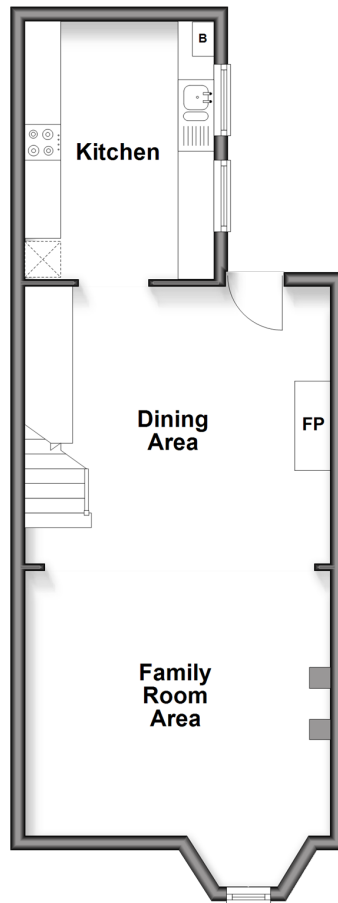
OVER 60?

Secure this property
for up to **59% less!**

Wards
Helping you move forwards

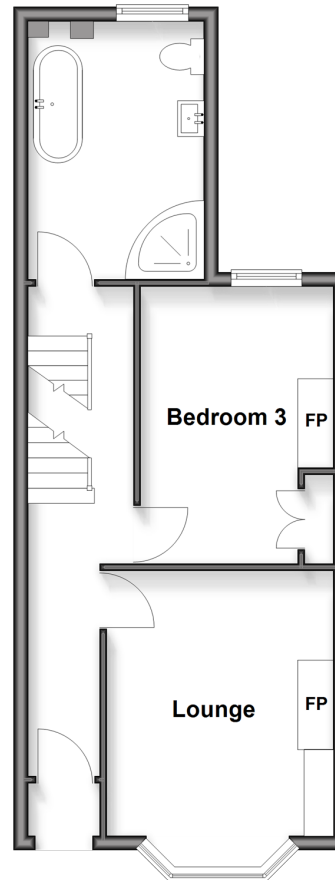
Split Level Lower Ground Floor

Approx. 43.4 sq. metres (467.5 sq. feet)



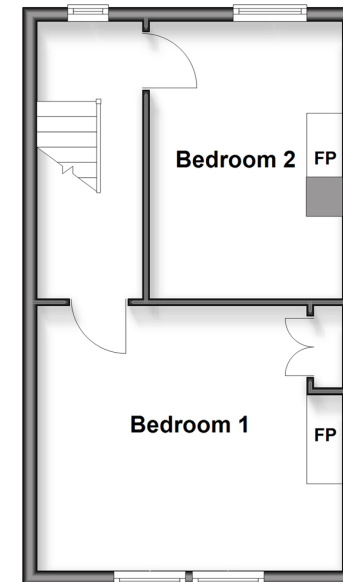
Split Level Ground Floor

Approx. 42.1 sq. metres (453.5 sq. feet)



First Floor

Approx. 32.8 sq. metres (352.7 sq. feet)



Accommodation

SPLIT LEVEL GROUND FLOOR

Entrance Hallway

Lounge: 12'1 x 10'5 (3.69m x 3.18m)

Bedroom 3: 12'8 x 8'9 (3.86m x 2.67m)

Bathroom

SPLIT LEVEL LOWER GROUND FLOOR

Family Room Area: 13'8 x 10'11 (4.17m x 3.33m)

Dining Area: 13'9 x 12'6 (4.19m x 3.81m)

Kitchen: 11'1 x 7'8 (3.38m x 2.34m)

FIRST FLOOR

Landing

Bedroom 1: 13'9 x 12'3 (4.19m x 3.74m)

Bedroom 2: 12'9 x 8'8 (3.89m x 2.64m)

OUTSIDE

Front Garden

Rear Garden



Main features

- Large bay front Victorian terraced house in beautiful condition
- Well presented, with a wealth of original features and charm
- Set over 3 floors, lower ground floor offers excellent family and dining space
- Perfect home for a family or professional couple
- Walking distance to Chatham Railway Station, as well as popular local schools



Nearest Schools

Primary Schools: St Michael's RC Primary 0.1 miles, St John's Infants 0.2 miles, Balfour Juniors 0.4 miles
Secondary Schools: St John Fisher Catholic Comprehensive 0.5 miles, Fort Pitt Grammar 0.3 miles, Holcombe Grammar 0.9 miles



Transport Information

Train Stations: Chatham 0.2 miles, Rochester 0.7 miles, Strood 1.5 miles



Address

Rochester Street, Chatham, Kent, ME4



Directions

For directions to this property please contact us.



Wards
Helping you move forwards

Call Chatham Branch 01634 841243 ■ wardsofkent.co.uk



- Legal advice should be taken to verify fixtures/fittings, planning, alterations and/or lease details
- Appliances & services are untested, dimensions are approximate and floor plans are not to scale
- Through a Homewise Home For Life Plan people aged 60+ can secure this property for up to 50% less, by purchasing a Lifetime Lease



10435704/20251206/AP/BC