



Chelsea Cloisters, SW3

£750,000

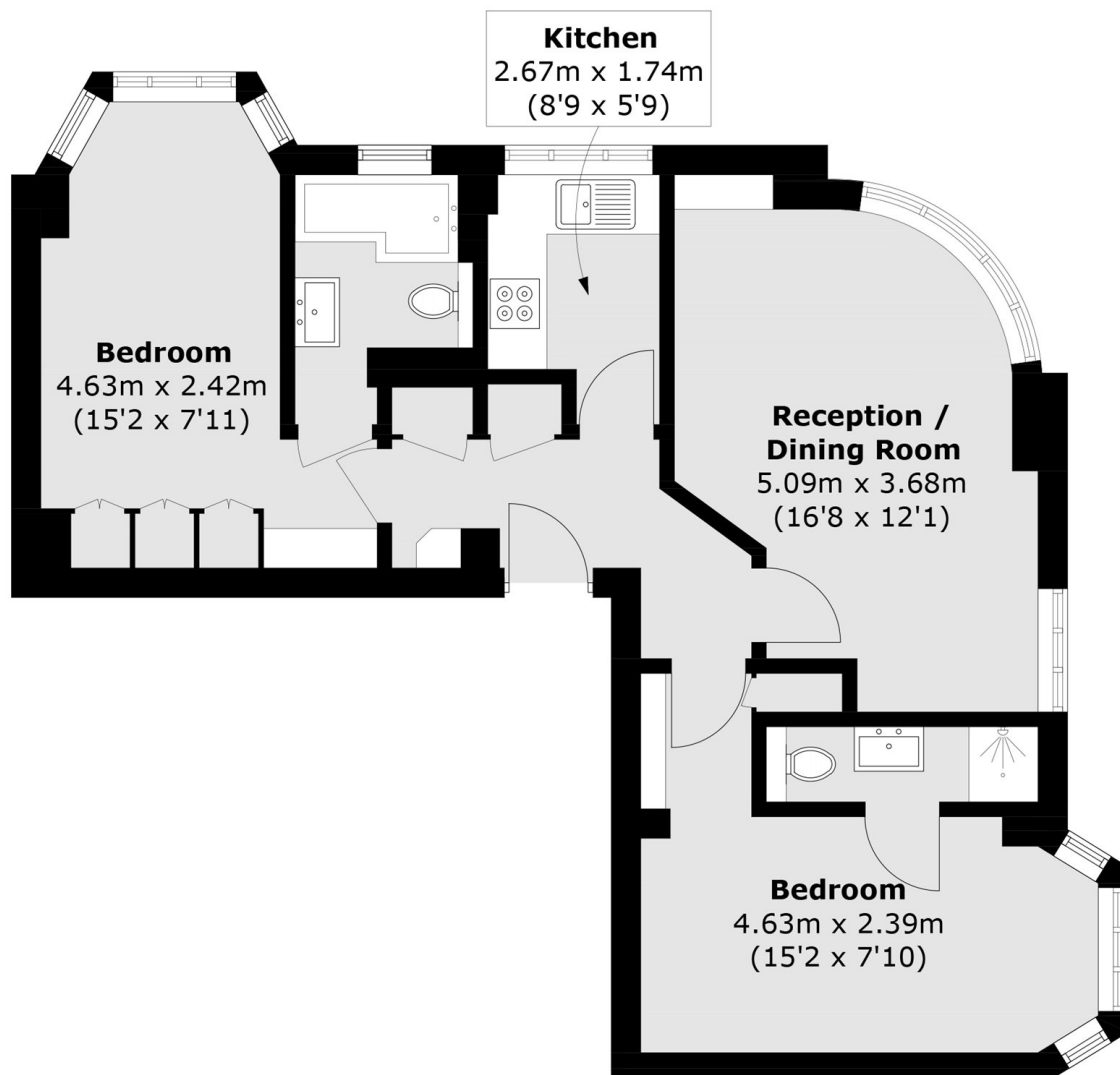
A two bedroom, two bathroom apartment that would work perfectly as a rental investment or London base. This property has plenty of natural light and has recently been refurbished.

Chelsea Cloisters is located between Sloane Square and South Kensington tube stations. The world famous shops and restaurants the King's Road have to offer are also within walking distance.

Features

- Two Bedrooms
- Porter
- Leasehold
- Lift
- Two Bathrooms
- Great Condition

Chelsea Cloisters, London, SW3



Second Floor

Total area (approx.): 59.9 sq. m (644.8 sq. ft)