

Head Office:
Dixon Kelley Estate Agents
1 Penn Court
Station Road, West Moors
Dorset. BH22 0JJ

DORSET PARK HOMES

DRAFT

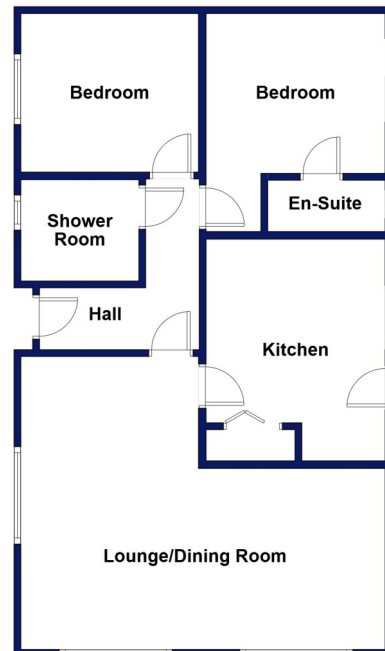
www.dorsetparkhomes.com

Telephone: 01202 877511

26 Holton Heath Park, Wareham Road, Holton Heath, Poole. BH16 6JS



Beautifully Presented Modern Park Home



This drawing has been prepared for diagrammatic purpose only. Not to scale

2 Bedroom Park Home approx 34' x 20'

Accommodation & approximate room dimensions:

- Stately Albion 'Tredegar' Park Home circa 2010
- Hall: Hatch to roof space.
- Lounge/Dining Room: approx 19'4" x 15'6" max. 3 Bay windows.
- Kitchen: approx 11'8" x 9'4". Good range of floor & wall cupboards. Space for washing machine, dishwasher & tall fridge/freezer. Built-in oven, hob & hood. Cupboard housing combination gas boiler. Broom cupboard. Door to garden.
- Bedroom 1: approx 11'5" x 9'5" max. Built-in wardrobes & patio doors to Sun Terrace.
- En-Suite Cloakroom: Wash basin & WC.
- Bedroom 2: approx. 9'5" x 8'4". Fitted wardrobe.
- Shower Room: Shower cubicle. Vanity wash basin & WC.
- Gas Central Heating (system untested)
- PVCu Double-Glazing
- Delightful Patio Garden with raised Sun Terrace. Large Garden Shed.
- Parking on Plot
- Age Restriction 50+ 1 Cat Permitted. No Dogs
- Small, popular Residential Park near to local amenities and between Wareham & Poole.

Popular Residential Park



Pitch Fee: approx £207.03 per month

Subject to Annual Review

Council Tax band: 'A'

Tenure: 1983 Mobile Homes Act Agreement

PRICE £160,000

VIEWING STRICTLY BY APPOINTMENT WITH THE VENDOR'S AGENT Dorset Park Homes 01202 877511

IMPORTANT NOTE: These particulars are believed to be correct but their accuracy is not guaranteed. They do not form part of any contract. Nothing in these particulars shall be deemed to be a statement that the property is in good structural condition or otherwise, nor that any of the services, appliances, equipment or facilities are in good

The recommended specialist in Park Home sales
Proprietor: Simon Dixon

