

Let **UK** Home

2 Bedrooms

Flat

Located in London

£500,000



info@letukhome.co.uk

<https://www.letukhome.co.uk/>

01795 358 886



Lombard Square, Plumstead London

SE28 0FX



Let UK Home are excited to offer a stunning 2-bedroom apartment in Rosa House, part of Lombard Square, a brand new neighbourhood for Plumstead, south east London in the Royal Borough of Greenwich.

This property comprises a large bright open plan kitchen and living room leading to a large private balcony with great views, two double bedrooms(master with wardrobes and en-suite), a large family sized bathroom and ample storage.

Your residents' amenities will make life a breeze, providing an array of conveniences such as a coffee shop and express food shop designed to enhance your everyday living experience. Enjoy the on-site (opt-in) gym, where you can stay fit and healthy without leaving the comfort of your community. The concierge service, and a parcel reception are there for your convenience along with electric charging points and secure bike storage on-site.

Plumstead High Street has a variety of businesses, from cafes and restaurants to pharmacies and shops. A short walk over In Woolwich at Royal Arsenal Riverside, you'll be spoilt for choice with food and drink options, more supermarkets, and independent shops. The Creative District at Woolwich Works will keep your schedule busy with great entertainment events and theatre year round.

Lombard Square, Plumstead London

£500,000 Leasehold

- 6th Floor
- Concierge Service
- The Gym
- Beautiful parkland & waterway views
- 24h Security
- Bike Storage

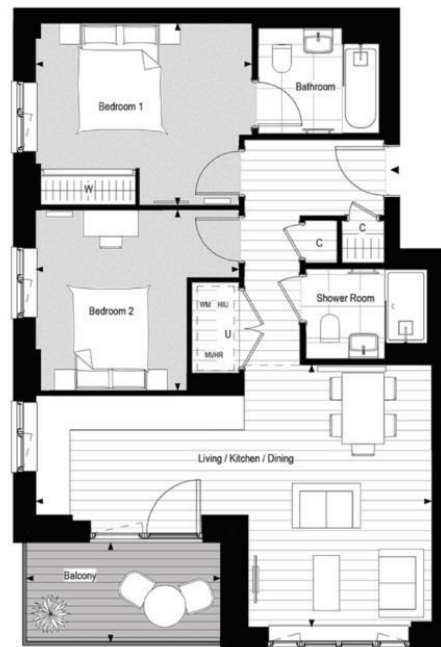


**ROSA HOUSE
APARTMENT**

2 Bedrooms
Sixth Floor
Available
Price: £530,000

Living / Kitchen / Dining	7.52m x 4.98m	24'8" x 16'4"
Bedroom 1	4.10m x 3.45m	13'5" x 11'4"
Bedroom 2	3.86m x 3.43m	12'8" x 11'3"
Internal Area	73.6 sq m	792 sq ft
Balcony	3.69m x 1.89m	12'1" x 6'2"

PLANS
INTERIORS
MATERIAL CHOICES
VIEWS
SPECIFICATION



Let **UK** Home

3F 2 Eastbourne Terrace
Paddington
London
W2 6LG

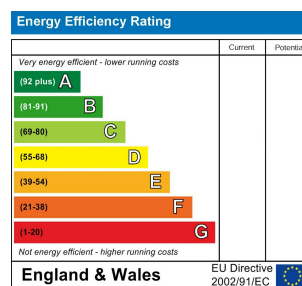
01795 358 886

info@letukhome.co.uk

Council Tax Band:

Local Authority:

Agents Note: Whilst every care has been taken to prepare these particulars, they are for guidance purposes only. All measurements are approximate and are for general guidance purposes only and whilst every care has been taken to ensure their accuracy, they should not be relied upon and potential buyers/tenants are advised to recheck the measurements.



<https://www.letukhome.co.uk/>