



Charnwood Cottage, Chester Road - Exceptional Family Home

£650,000

4 2 3



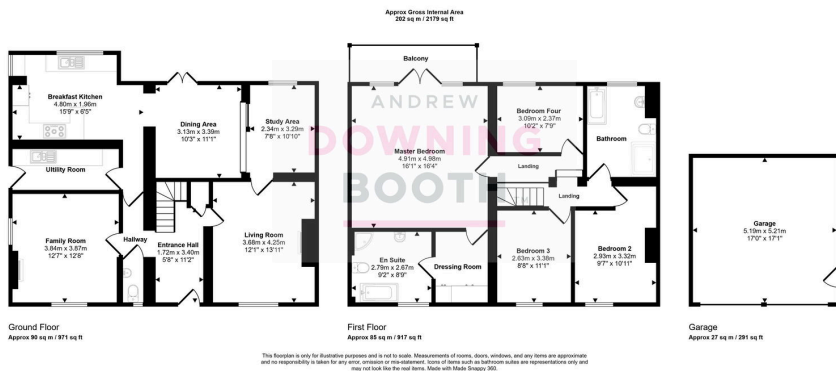
Chester Road is a rare find, offering a property of exceptional calibre that combines spacious, family living with a highly sought-after location.

This property is situated in a semi-rural area within the catchment area for the prestigious King Edward VI School. The location offers excellent access to local amenities including shops, cafes, and parks close to Little Aston. For broader options, the historic city of Lichfield is just a short drive away, providing a wealth of cultural attractions, dining, and shopping. Well-connected by road and public transport, the property enjoys easy commuting links to surrounding areas, making it perfect for families seeking a balance of village charm and city convenience.

The accommodation is arranged over two floors, beginning with a welcoming entrance hall leading to a spacious living room, dining room, additional reception room, study area, kitchen/diner, utility room, and guest WC. Upstairs, the master bedroom boasts a walk-in wardrobe, en-suite bathroom, and a balcony overlooking the garden. There are three further double bedrooms and a family bathroom completing the first floor.

A rare opportunity to acquire a home of this calibre—book your viewing now to fully appreciate what's on offer.





- Superb Four Bedroom Traditional Home
- Impressive & Well Maintained Landscaped Garden
- Ample Off-Road Parking & Double Garage
- Impressive Master Suite With Walk-in Wardrobe & Private Ensuite
- Phenomenal Rear Views Of The Greenery
- Convenient Location & Access To Highly Regarded Local Schools
- Versatile Layout With Four Reception Rooms
- EPC Rating: D
- Council Tax Band: D
- 360 Virtual Tour Available

