





**\*\*NO ONWARD CHAIN\*\***

NEXA Properties are delighted to welcome to the market this three bedroom end terrace house situated on Kent Street, Portsmouth.

Comprised of a spacious lounge, leading onto a good sized kitchen with appliances and a shower room with double shower cubicle, basin and WC. Off the kitchen is access to a north facing garden with storage shed and extra WC.

Upstairs offers two good size bedrooms and a smaller room which is perfect for a child or study/office.

Other benefits include -

Gas central heating  
Double glazing  
Outside storage  
No onward chain

The property is situated within easy access in and out of the city and within walking distance to Commercial Road, Gunwharf Quays and Old Portsmouth.

Contact NEXA to arrange a viewing.

- NO ONWARD CHAIN
- SPACIOUS THROUGHOUT
  - END TERRACE
- EASY ACCESS TO M275
- CENTRAL LOCATION
- CLOSE TO TRANSPORT LINKS
- WALKING DISTANCE TO GUNWHARF QUAYS
- GAS CENTRAL HEATING

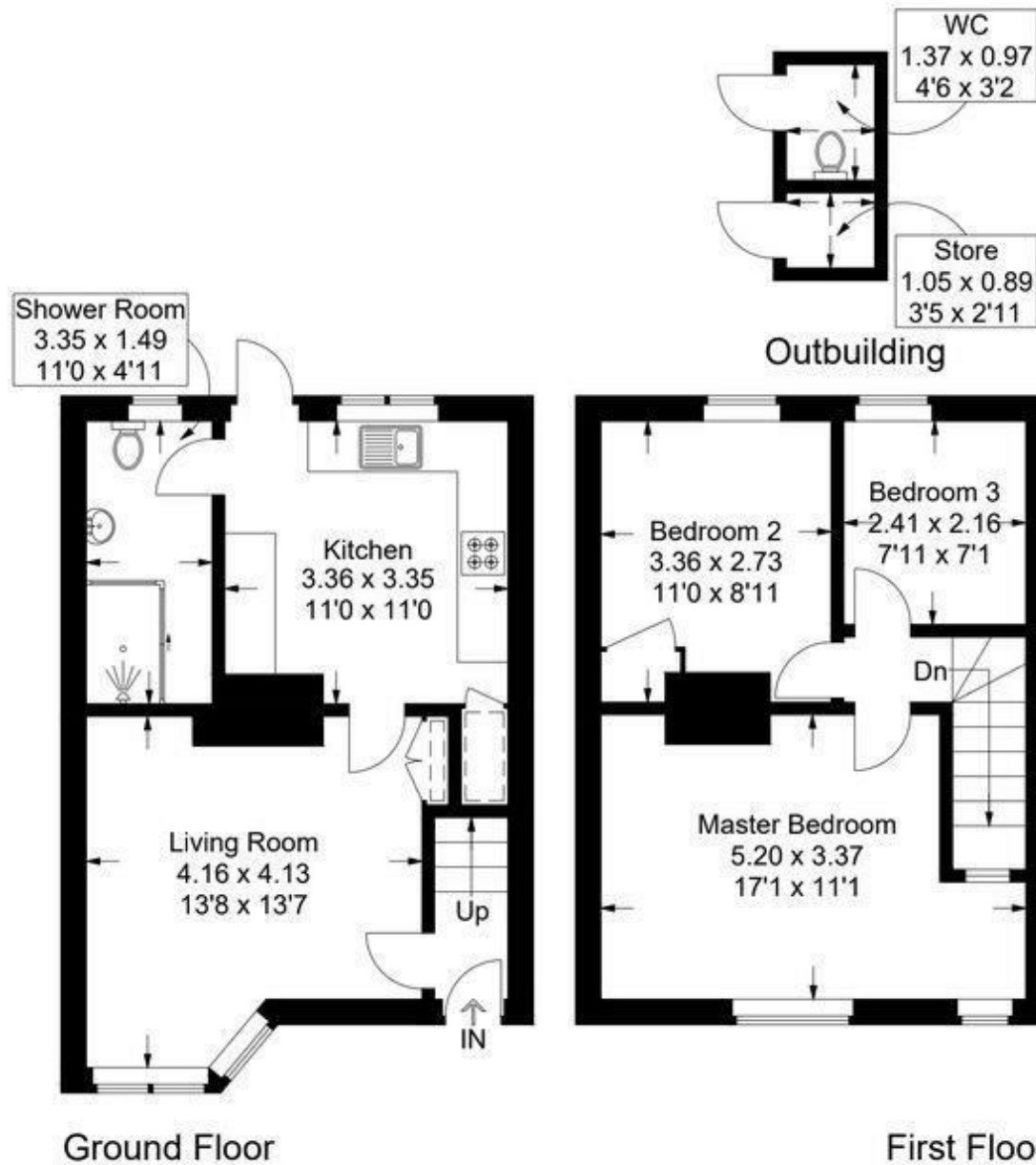


# Kent Street, Portsmouth

Approximate Gross Internal Area = 70.5 sq m / 759 sq ft

Outbuilding = 2.5 sq m / 27 sq ft

Total = 73 sq m / 786 sq ft



This plan is for layout guidance only. Not drawn to scale unless stated. Windows and door openings are approximate. Whilst every care is taken in the preparation of this plan, please check all dimensions, shapes and compass bearings before making any decisions reliant upon them.