



KEEPER'S FORGE
LEEMING BAR

BY
together
homes



Your best life

Keeper's Forge is a delightful development of 2, 3 and 4 bedroom homes built to a high specification through our partnership with Wharfedale Homes.

Situated in Leeming Bar, North Yorkshire, Keeper's Forge is ideally located for both commuting and enjoying the great outdoors. The proximity to the A1 (M) provides easy access to transport routes, and the development is just a 10 minute walk from the railway station where you can enjoy trips to locations along the Wensleydale Railway.

Whether it's embarking on scenic hikes in the North York Moors, discovering historic landmarks, or simply immersing oneself in the tranquillity of the local countryside, Keeper's Forge at Leeming Bar provides the opportunity to take in the scenic surroundings.

The town itself offers a range of amenities, including shops, restaurants, and pubs, catering to the needs of both residents and visitors. For those interested in a tipple, the local gin distillery offers tours and experiences!

Your dream home

At Together Homes, we are passionate about helping you find and move into your dream home, whether you are new to the property ladder or aspiring to move up it.

Your brand new, energy efficient home boasts a modern fitted kitchen and generous rooms within. To the exterior, you can enjoy private parking and a spacious garden with patio.

Shared Ownership is a fantastic way to start out on the property ladder if you can't quite afford the mortgage on 100% of a home.

Put simply you part buy, part rent your home. You purchase a share of the property, then pay a proportionate rent to us for the share you don't own, for example, if you buy an initial 50% share, you will pay rent on the remaining 50% share - the amount of rent depends on the value of your home and is reviewed annually in line with inflation.

You can buy greater shares in your home as and when you can afford to.

This process is called Staircasing. In many cases, you can eventually own 100% of your home outright, at which point you will pay only your mortgage, but no rent. Service charges or management fees may still apply.

Shared Ownership can help you start or remain on the property ladder and is a great alternative to buying outright or renting your home.

Ask the Together Homes team today about Shared Ownership!

A unique development



2 Bed House

Epping

27 28 35 36 67
68 71 72 76 77

2 Bed Bungalow

Weston

33 69 70

3 Bed House

Stapleford

10 11 65 66

Whitwell

21 22 25 26 49
50 52 53 54

Yaxham

12 13 23 37
39 74 75

Waltham

24 46

Carnforth

20 38 78 82

4 Bed House

Malden

30 45 80 81

Tanfield

29 47 51 73

Hampton

41 42 44 48

Lynton

40 43 79





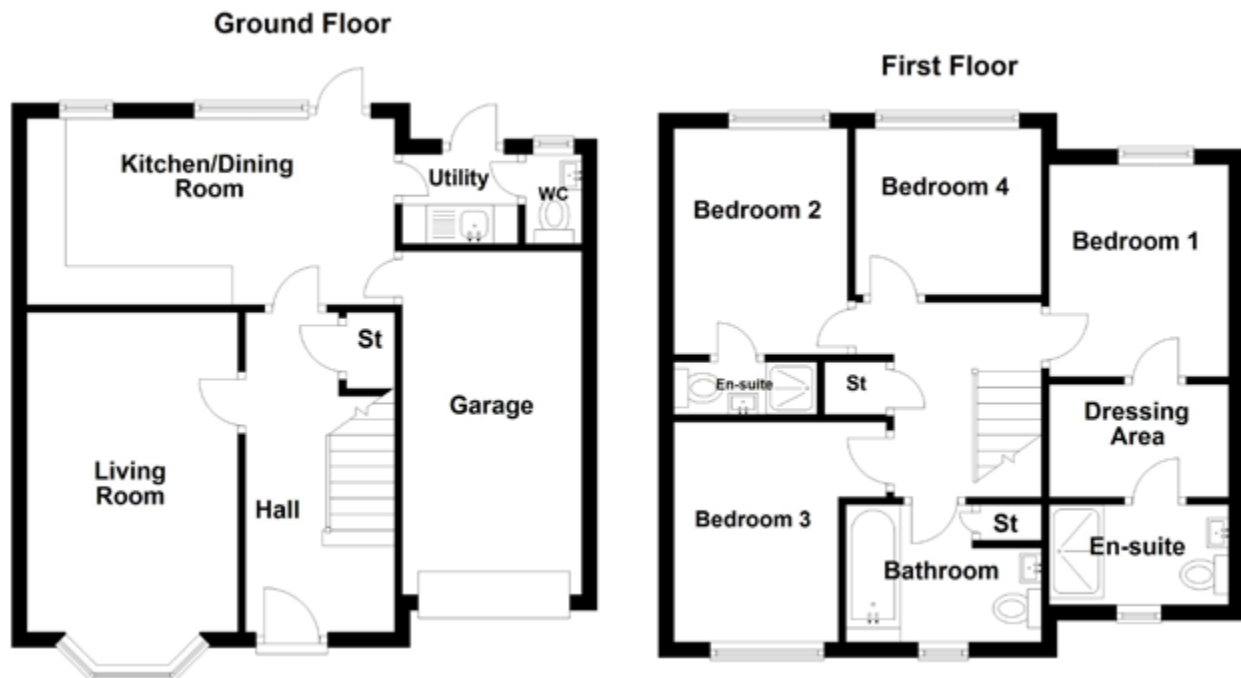
The Tanfield | 4 Bedroom Detached



The Tanfield | 4 Bedroom Detached

This four bedroom home is set across two floors. Downstairs, there is a garage, with access to the kitchen and dining room. The adjacent utility room leads to the downstairs WC. There is a spacious living room and the hallway is rounded off by a storage cupboard.

Upstairs, the landing features a further two storage cupboards. The master bedroom is complete with a dressing area, and en-suite bathroom, containing a shower, toilet and basin. The second double bedroom also features an en suite bathroom. There is a smaller third bedroom and a fourth bedroom, which could be re-purposed as a home office or playroom. The upstairs floor is rounded off by a bathroom with a bath, basin and toilet.



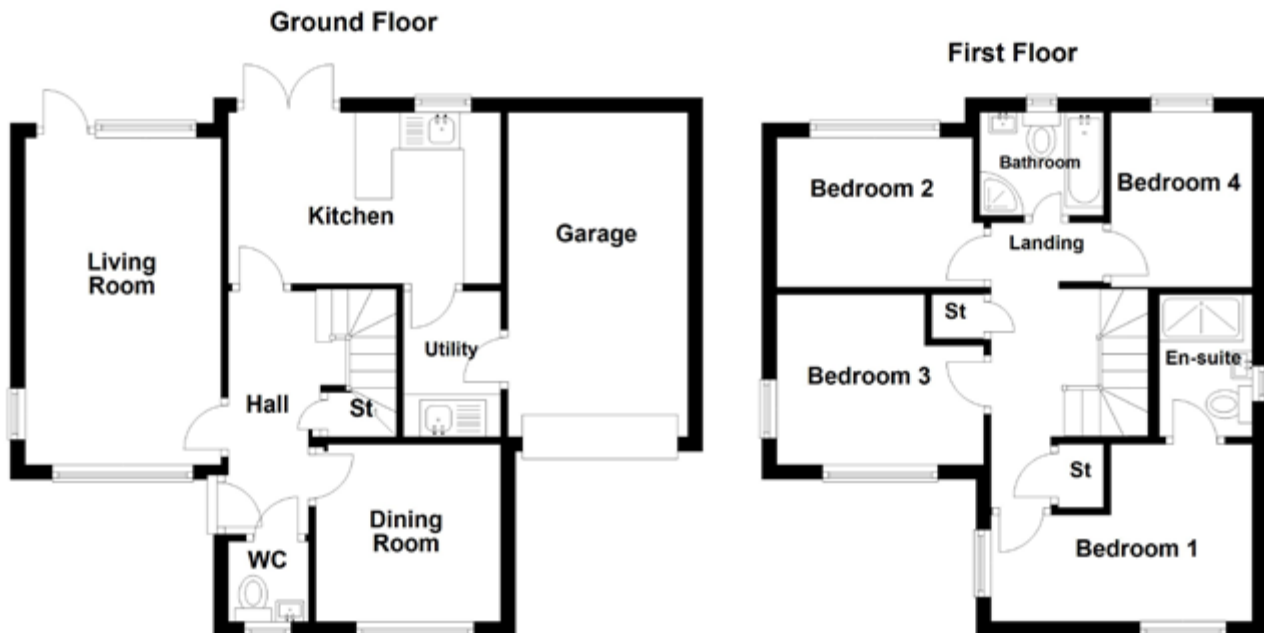
The Malden | 4 Bedroom Detached



The Malden | 4 Bedroom Detached

This four bedroom home is set across two floors. Downstairs, the hallway leads to the generous lounge, with French doors that opens out onto the private rear garden. The kitchen also features French doors leading to the garden, and a utility room with access to the garage. The entrance hallway leads to the dining room, which could be re-purposed as a snug or home office, a storage cupboard, and a WC.

Upstairs, the landing features a further two storage cupboards. The master bedroom has an en-suite bathroom containing a shower, toilet and basin. There are an additional three bedrooms, and a bathroom comprising a bath, shower, toilet, and basin.



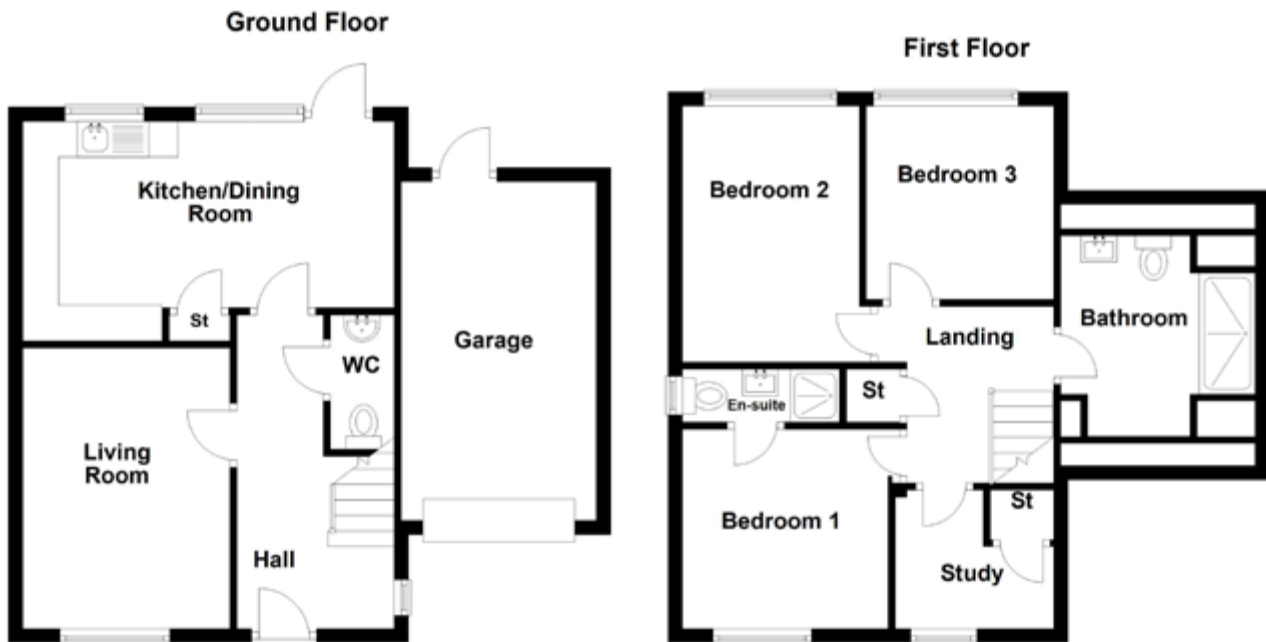
The Yaxham | 3 Bedroom Detached



The Yaxham | 3 Bedroom Detached

This three bedroom home is set across two floors, with an adjacent garage. Downstairs, the hallway leads to the spacious living room, and to the downstairs WC. The open plan kitchen and dining room features a storage cupboard, and rear door leading out into the private garden.

Upstairs, the landing leads to a second storage cupboard. There is a generous family bathroom and three bedrooms; a master bedroom with en suite bathroom and two smaller bedrooms. Additionally there is a study with a further storage cupboard.



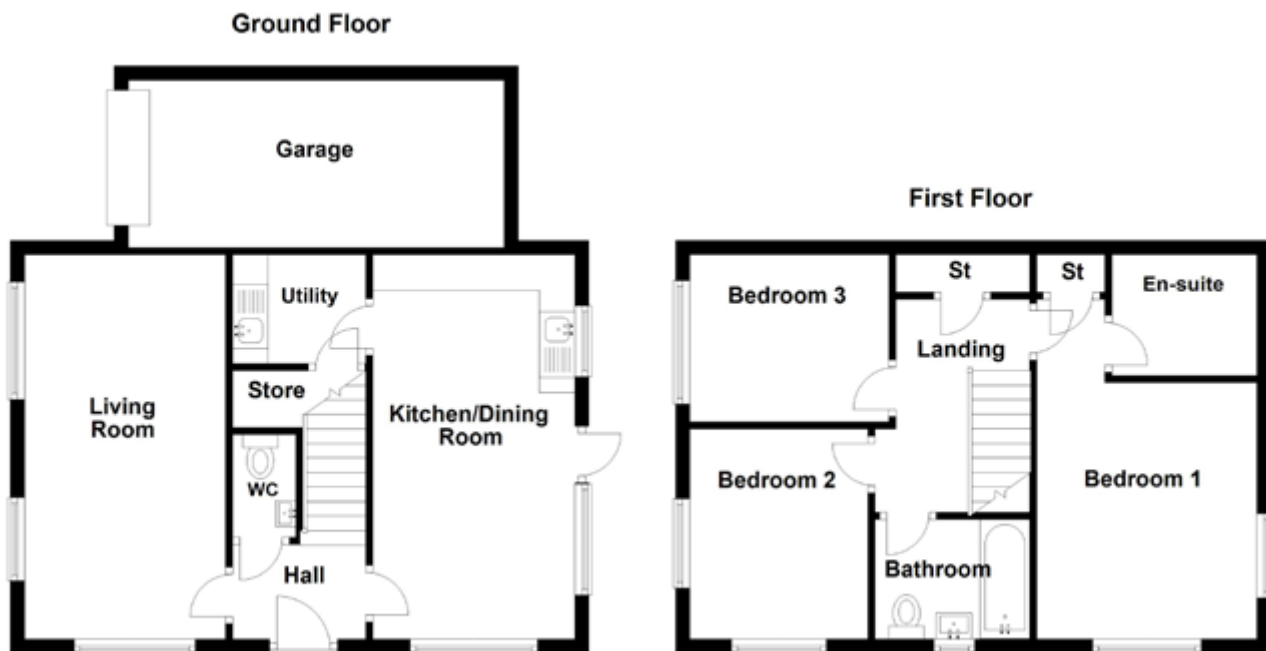
The Carnforth | 3 Bedroom Detached



The Carnforth | 3 Bedroom Detached

This three bedroom home is set across two floors, with an adjacent garage. Downstairs, the hallway leads to the spacious living room, and to the downstairs WC. The open plan kitchen and dining room leading out into the private garden, and to the utility room with store cupboard.

Upstairs, we find two further storage cupboards, a bathroom which contains a bath, toilet and basin, and three bedrooms, a master bedroom with en-suite, and two smaller bedrooms.



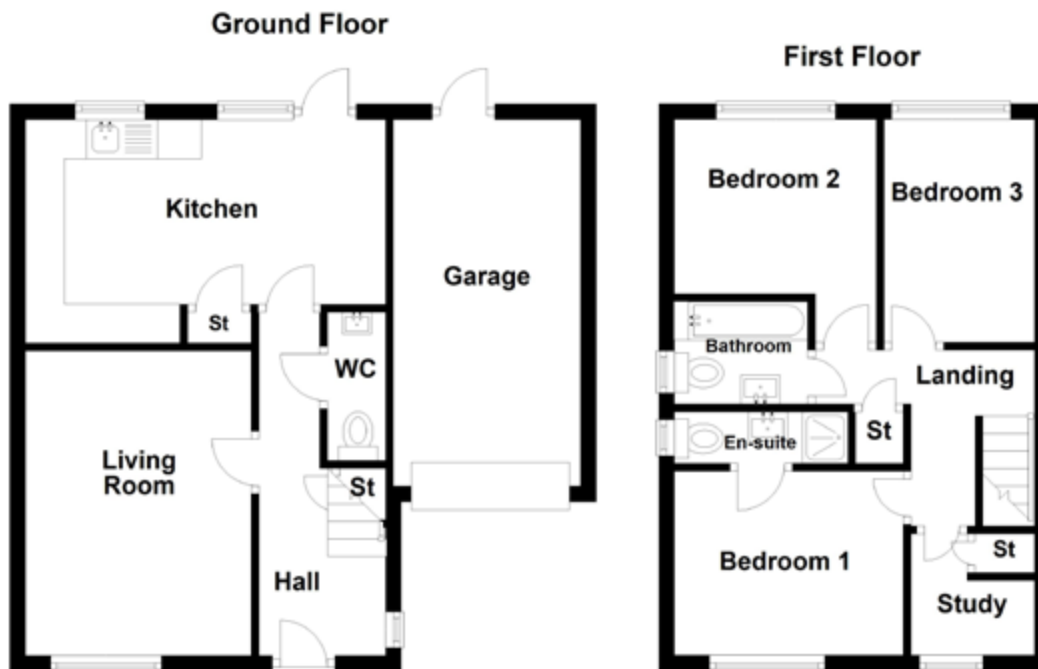
The Whitwell | 3 Bedroom Semi-Detached



The Whitwell | 3 Bedroom Semi-Detached

This three bedroom home is set across two floors, with an adjacent garage. Downstairs, the hallway leads to the spacious living room, and to the downstairs WC. The open plan kitchen and dining room leading out into the private garden, and to the store cupboard.

Upstairs, the landing leads to a second storage cupboard. There is a generous family bathroom and three bedrooms; a master bedroom with en suite bathroom and two smaller bedrooms. Additionally there is a study with a further storage cupboard.



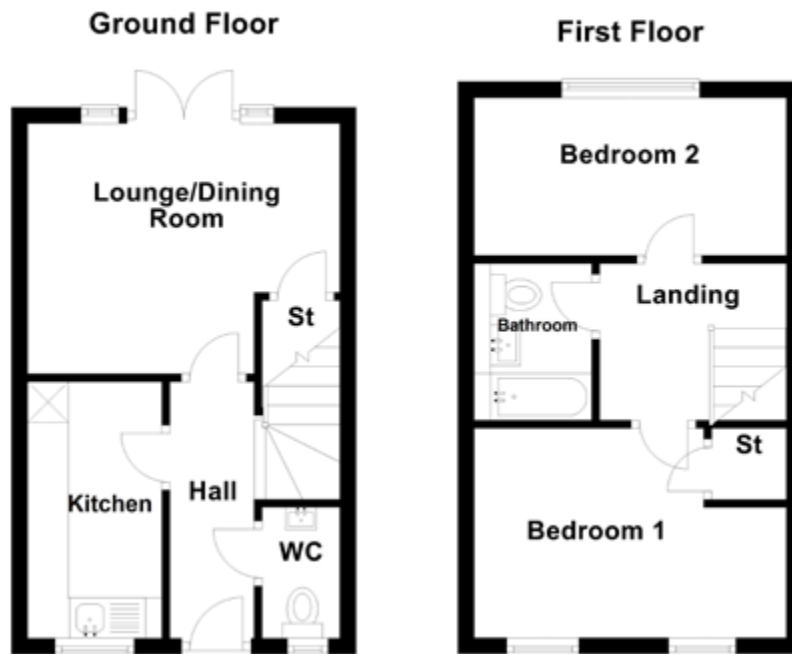
The Epping | 2 Bedroom Semi-Detached



The Epping | 2 Bedroom Semi-Detached

This two bedroom home is set across two floors, with a spacious private drive. Downstairs, the hallway leads to the spacious living / dining room, to the downstairs WC, and to the kitchen. There is an under-stairs store cupboard.

Upstairs, the landing has to a second storage cupboard. There is a bathroom with bath, basin and toilet, and two generous bedrooms.



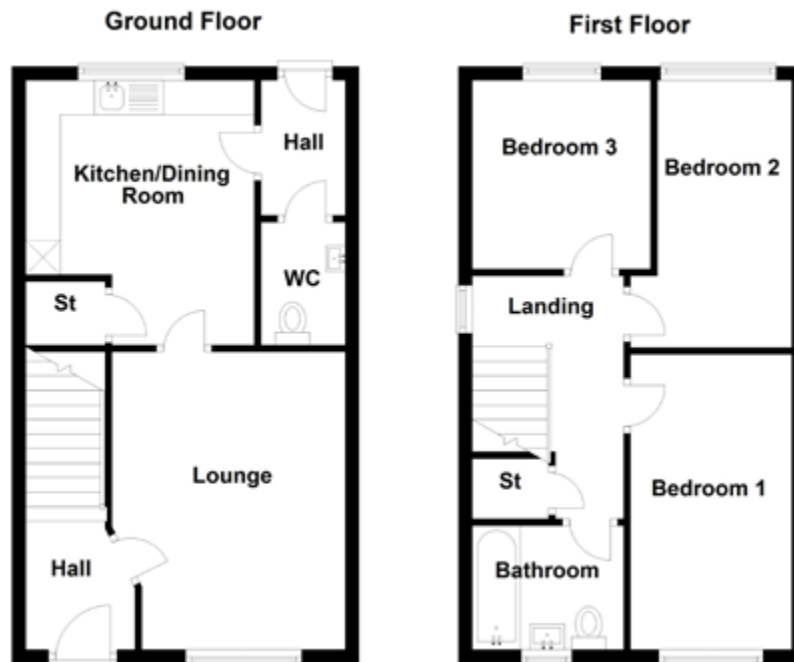
The Stapleford | 3 Bedroom Semi-Detached



The Stapleford | 3 Bedroom Semi-Detached

This two bedroom home is set across two floors, with a spacious private drive. Downstairs, the hallway leads to the spacious living room. The kitchen /dining room features storage cupboard and leads to a rear hallway which could serve as a boot room. From here, there is access to the rear garden and the downstairs WC.

Upstairs, the landing has to a second storage cupboard. There is a bathroom with bath, basin and toilet, and two generous double bedrooms. The third bedroom could be re-purposed as a home office.



The Weston | 2 Bedroom Bungalow



The Weston | 2 Bedroom Bungalow

This charming bungalow features an open plan living room / kitchen / dining room, with French doors leading out onto the private rear garden.

There are two generous store cupboards, a master bedroom, second bedroom, and a bathroom with bath, basin and toilet.

Ground Floor



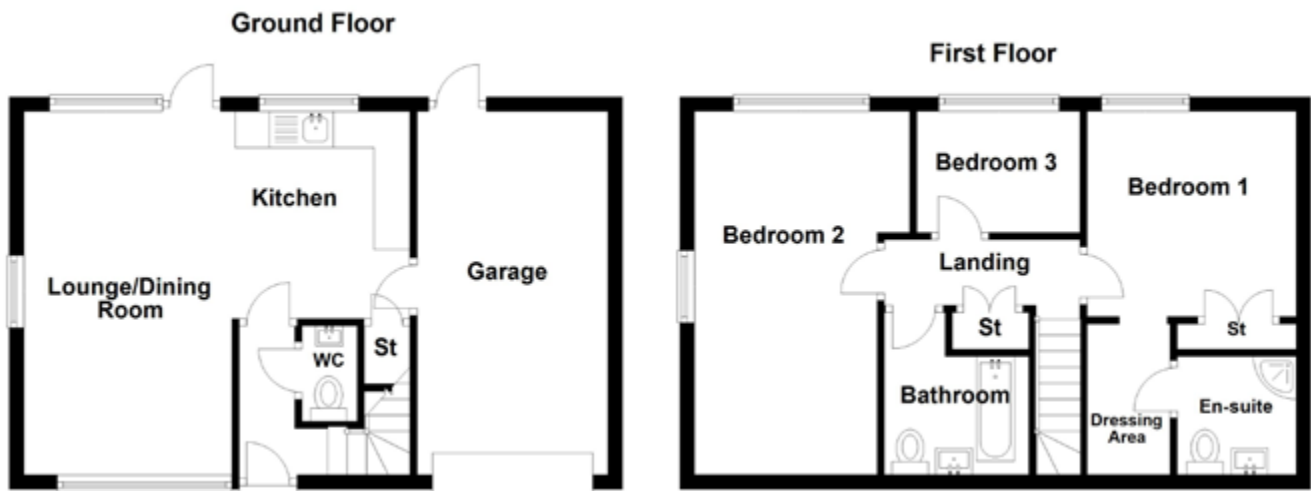
The Waltham | 3 Bedroom Detached



The Waltham | 3 Bedroom Detached

This modern three bedroom home is set across two floors. The downstairs consists of a spacious, open plan lounge, kitchen and dining room. The downstairs WC can be accessed from the hallway. From the kitchen, there is access to a storage cupboard, and the rear garden, and garage.

Upstairs, the landing leads to the bathroom, with bath, basin and toilet, and a second storage cupboard. The master bedroom features a built-in storage cupboard, a dressing area and an en-suite bathroom with of a shower, basin and toilet. There is a generous second double bedroom, and a third smaller bedroom, which can also be utilised as a home office.



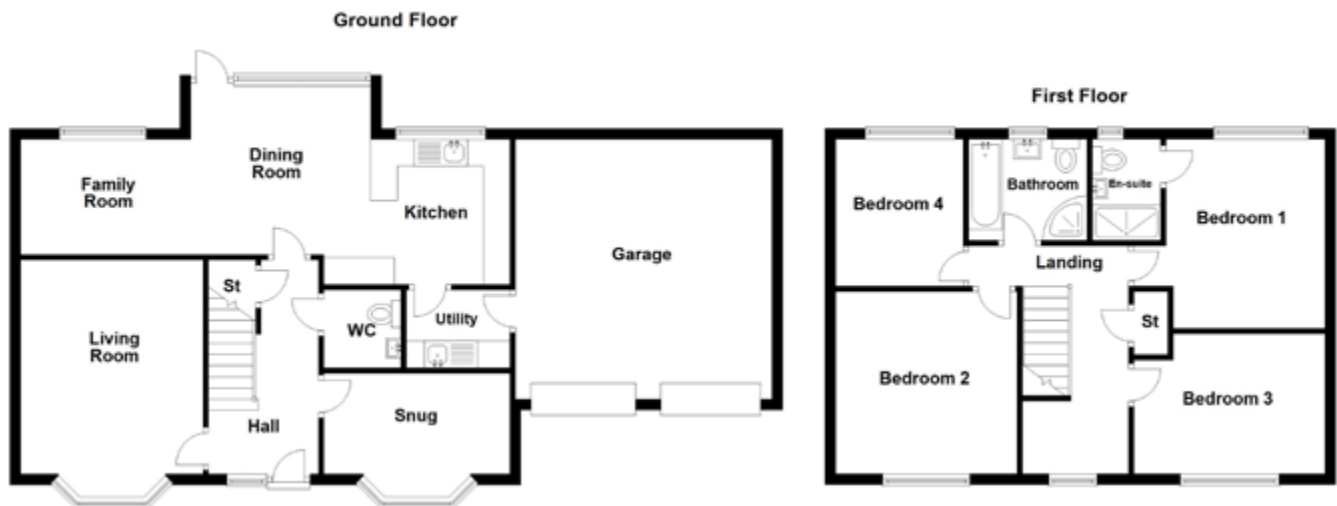
The Lynton | 4 Bedroom Detached



The Lynton | 4 Bedroom Detached

This ideal four bedroom family home is set across two floors. Downstairs, there is snug which can be re-purposed as a home office, a spacious living room, a downstairs WC, and under-stairs storage cupboard. The open plan kitchen with dining room and family room, has a back door leading out onto the rear garden, as well as a utility room and a double garage accessed from the utility room.

Upstairs, the landing features a storage cupboard and a bathroom with bath, shower, basin and toilet. The master bedroom features an en-suite bathroom with a toilet, basin and walk-in shower. There are two further double bedrooms, and a single bedroom, which could be re-purposed as a study.



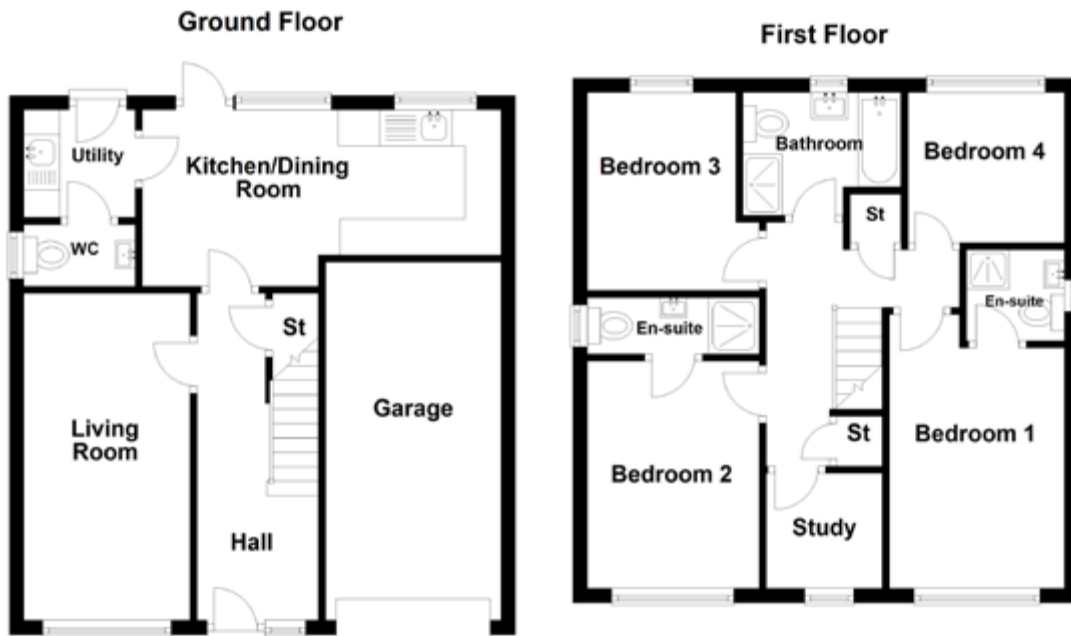
The Hampton | 4 Bedroom Detached



The Hampton | 4 Bedroom Detached

This stunning four bedroom home is set across two floors. Downstairs, there is a spacious living room and an open plan kitchen and dining area with access to the private rear garden. The adjacent utility room provides access to the downstairs WC and a further door to the garden. There is an under-stairs storage cupboard accessed from the hallway. The garage is accessed from the front driveway.

Upstairs, the two double bedrooms both feature an en-suite bathroom, with a shower, toilet and basin. There are a further two smaller bedrooms and a family bathroom. The first floor also has a study and two storage cupboards.





LANDSCAPE
MAN

MAKING
A GARDEN

MAKING A GARDEN MATTHEW WILSON

JOHN P
HROWN
AN
ALEX
THE



...WILSON
MATTHEW WILSON



together
homes

www.mytogetherhome.co.uk

hello@mytogetherhome.co.uk

0300 330 5533