



John Street, WC1N
£1,950,000

Dexters



John Street, WC1N

Located in a charming 1930s Art Deco conversion, this stunning two-bedroom home blends period character with contemporary comfort. Occupying the entire 6th floor and boasting three bathrooms, two of which are en-suite, abundant natural light, generous built-in storage, and a large open-plan kitchen and reception area, it's an ideal space for relaxing or entertaining in style.

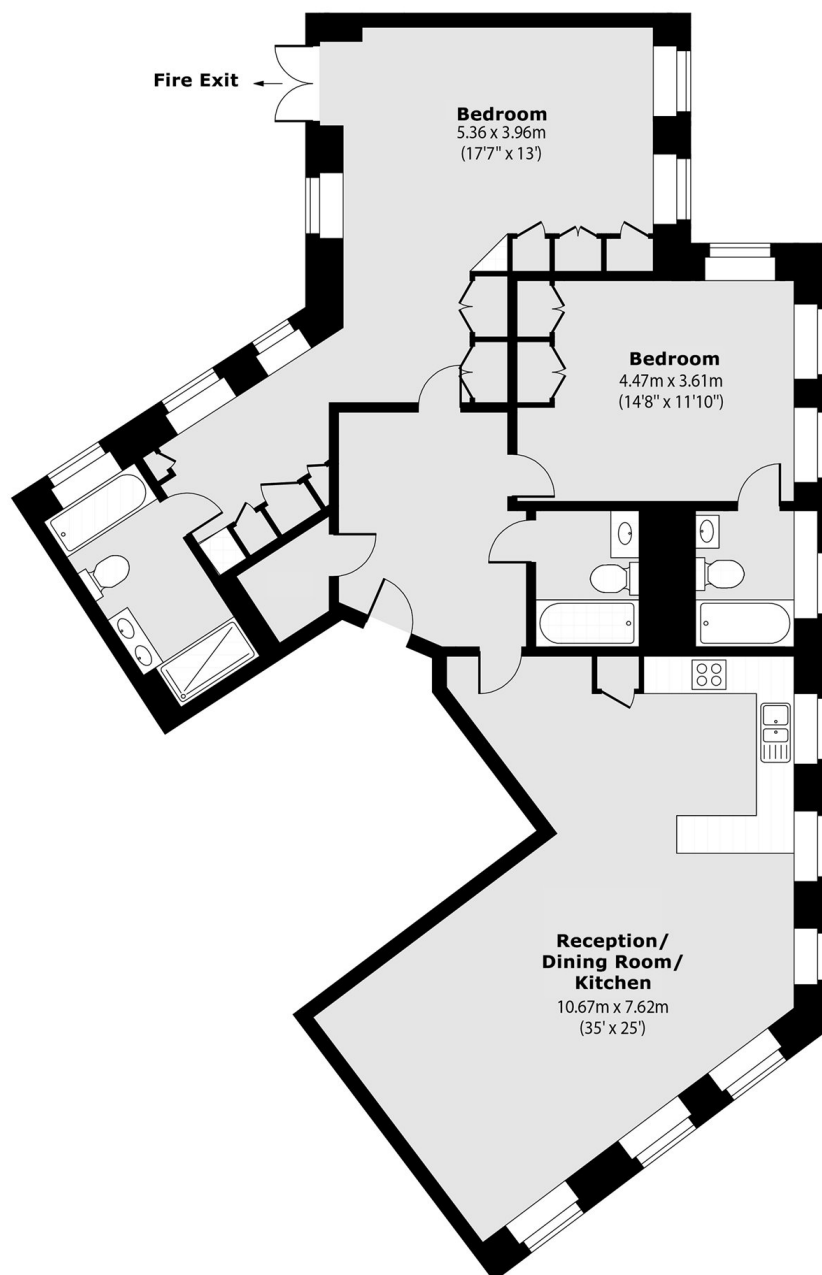
Set on one of Bloomsbury's most desirable tree-lined streets, John Street combines peaceful residential charm with outstanding convenience. With excellent transport links nearby and the West End just a short stroll away, it offers the perfect balance of tranquility and city living.

Features

- Two Double Bedrooms
- Circa 1400 Sq Ft
- Three Bathrooms
- Lift Access
- Excellent Location
- No Onward Chain



John Street, London, WC1N



Total area (approx): 127.27 sq m (1370 sq. ft)