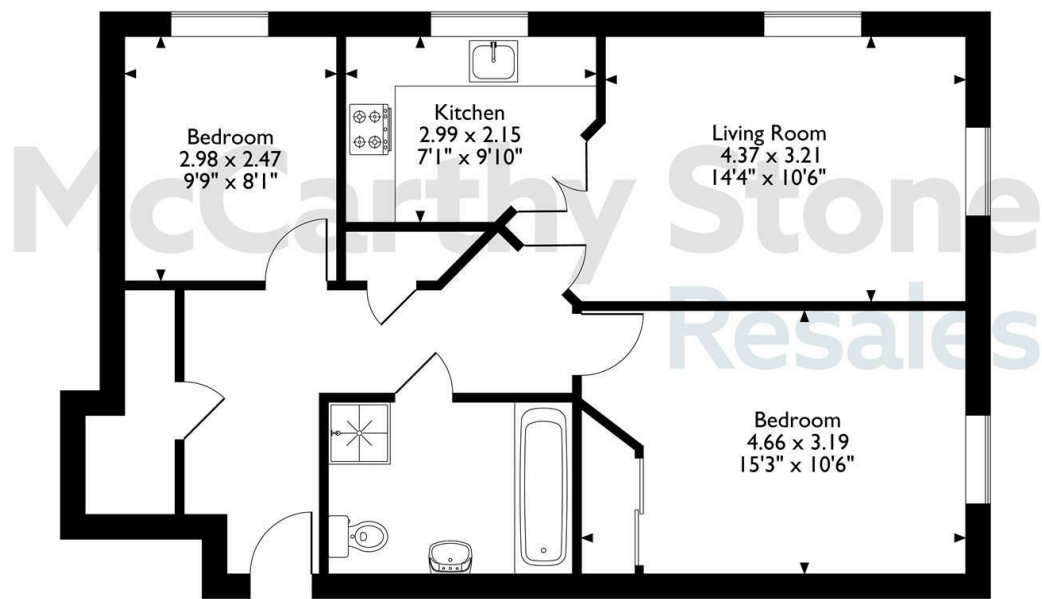


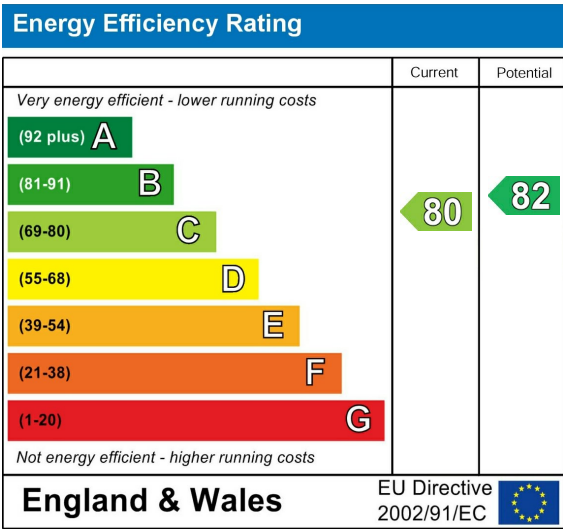
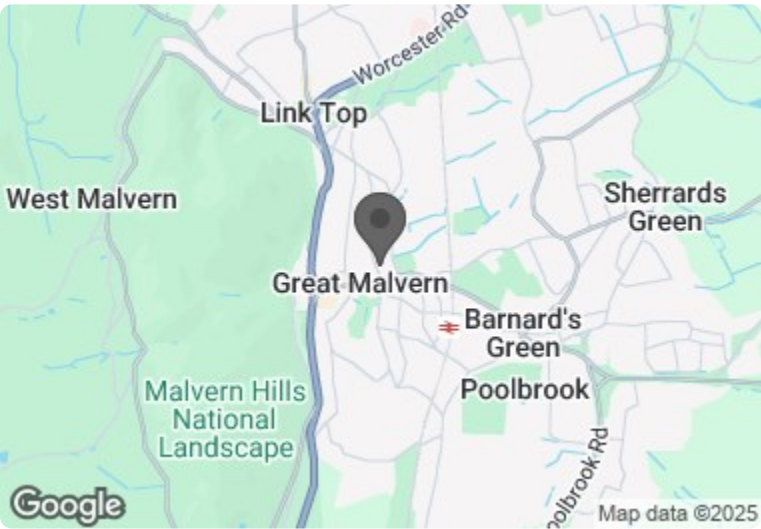
Cartwright Court, Apartment 52, 2, Victoria Road, Malvern,
Worcestershire
Approximate Gross Internal Area
66 Sq M/710 Sq Ft



Second Floor Flat

The position & size of doors, windows, appliances and other features are approximate only.
© ehouse. Unauthorised reproduction prohibited. Drawing ref. dig/8650633/DST.

Council Tax Band: C



This floor plan is not drawn to scale and is for illustrative purposes only. Any measurements, floor areas (including any total floor area), openings and orientation are approximate and for guidance only. McCarthy Stone Resales do not take liability for any error, omission or misstatement. All parties must rely on their own inspections. It should not be assumed that any furniture or fittings contained in the photographs are included in any sale. All details referring to time and distances to localities are approximate. Details regarding any common charges and other applicable fees are provided by the seller and should not be relied on without verification and further checks made through a solicitor/conveyancer. Please contact the Property Consultant for further information that Appliances (including central heating) have not been tested, therefore it cannot be assumed that they are in good working order. All interested parties are advised to check availability and make an appointment before travelling to view the property to avoid disappointment or wasted time or travel expenses. The details contained within this brochure are for information purposes only and do not form part of any agreement. All purchases will be subject to contract terms. © All artwork (photos and floorplans) and written content are the sole property and copyright of McCarthy & Stone Resales Limited and are legally protected by UK & International copyright laws. Under no circumstance may you download, reproduce, publish or distribute any content for commercial purposes, without prior written permission from McCarthy Stone Resales. Unauthorised duplication or usage for commercial purposes is prohibited by the Copyright law and will be prosecuted.



52 Cartwright Court

2 Victoria Road, Malvern, WR14 2GE

PRICE
REDUCED



PRICE REDUCTION

Asking price £179,000 Leasehold

TWO BEDROOM retirement apartment with DUAL ASPECT LOUNGE positioned on the SEVENTH FLOOR in McCarthy Stones CARTWRIGHT COURT development. ~Part of our Retirement living PLUS range~

Call us on 0345 556 4104 to find out more.

Cartwright Court, 2 Victoria Road, Malvern

Summary

Cartwright Court is an assisted living development comprising of 54 one and two bedroom apartments for the over 70s. Cartwright Court is one of McCarthy & Stone's Retirement Living PLUS range and is facilitated to provide its homeowners' with extra care.

An Estates Manager is on hand to manage the day to day running of the development and attend to any queries you may have. Within the service charge homeowners are allocated 1 hours domestic assistance per week, however, additional hours can be arranged by prior appointment. There are a range of flexible personal care packages to suit your requirements - these are provided by the onsite CQC registered care agency team.

For your reassurance the development is fitted with 24-Hour CCTV and a secure entry system. The development has a homeowners' lounge for socialising with friends and family and, for your convenience, an onsite waitress service restaurant with freshly cooked meals provided every day.

It is a condition of purchase that residents must meet the age requirement of 70 years or of age or over.

Entrance Hall

Front door with spy hole leads into the entrance hall. Door opening to storage cupboard. Further doors lead to the bedroom, wet room, and living room. Ceiling light fitting. A wall mounted emergency call module. Further safety features consist of a smoke detector and secure entry system.

Living Room

A spacious living room with dual aspect. TV and telephone point. Power points. Electric storage heater.

Two ceiling light points. An oak effect door with glazed panels leads into the kitchen.

Kitchen

Large fitted kitchen with a range of base and wall units. Fully integrated appliances comprising fridge, freezer, electric oven and induction hob with chrome extractor hood. Stainless steel sink unit sits under a double glazed window. Power points. Plinth heater. Tiled floor and splash back.

Bedroom One

Built in wardrobe with mirrored sliding doors containing both ample hanging space and shelving. Ceiling light. Power points. Emergency pull cord.

Bedroom Two

A second good sized bedroom which could be used as a dining room, hobby room or office. Ceiling light. Power points. Emergency pull cord.

Bathroom

Purpose built wet room with slip resistant safety flooring. Low level bath. Shower with curtain and grab rails. Vanity unit with inset sink and mirror above. Emergency pull-cord.

Service Charge (breakdown)

- Cleaning of communal windows
- Water rates for communal areas and apartments
- Electricity, heating, lighting and power to communal areas
- 24 hour emergency call system
- Upkeep of gardens and grounds
- Repairs and maintenance to the interior and exterior communal areas
- Contingency fund including internal and external redecoration of communal areas
- Buildings insurance

2 Bed | £179,000

The service charge for financial year ending 31/03/2026 is £14,891.08.

The Service charge does not cover external costs such as your Council Tax, electricity or TV. To find out more about the service charges please contact your Property Consultant or Estate Manager.

Car Parking Permit Scheme

Parking is by allocated space subject to availability. The fee is usually £250 per annum, but may vary by development. Permits are available on a first come, first served basis. Please check with the House Manager on site for availability.

Lease Information

Lease: 125 years from 1st June 2013
Ground rent: £510.00 per annum
Ground rent review: 1st June 2028

Additional Information & Services

- Fibre to the Cabinet Broadband available
- Mains water and electricity
- Electric room heating
- Mains drainage

Care & Support

The personal care services available at Cartwright Court can help you do more of the things you love and enjoy peace of mind when you need a helping hand. You'll get to know the dedicated CQC registered care and support team who are onsite each day, led by our wonderful Estates Manager. They can assist with anything from changing your bed and doing your laundry, to escorting you to appointments and helping you get washed and dressed ready for the day. What's more, the services are flexible, so you can tailor your care package to suit your needs - just speak with the Estates Manager who will be happy to help organise a care package ready for when you move in.

PRICE
REDUCED

