



30 Daisy Place, Congleton
Congleton



Guide Price **£265,000**

30 Daisy Place

Congleton, Congleton

Council Tax band: C

Tenure: Freehold

EPC Energy Efficiency Rating: B

EPC Environmental Impact Rating: B

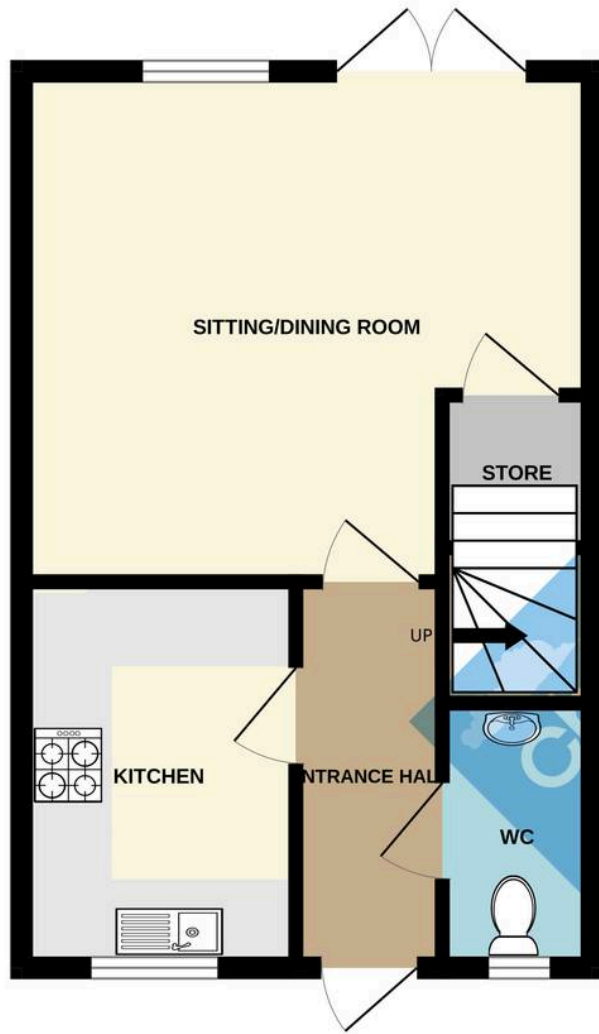
- Beautifully upgraded Seddons home in a private cul-de-sac position overlooking green space
- Exceptional kerb appeal with stone-effect detailing, graphite windows and contemporary porch
- Luxury interior specification with premium doors, quality flooring and sumptuous carpets
- Stylish gloss kitchen with integrated appliances and space for entertaining
- Stunning principal bedroom with bespoke illuminated fitted wardrobes and en-suite
- Two beautifully designed contemporary bathroom suites finished to a show-home standard
- Professionally landscaped low-maintenance garden with Indian stone terraces and covered pergola
- Sought-after West Heath location close to schools, amenities, countryside and transport links



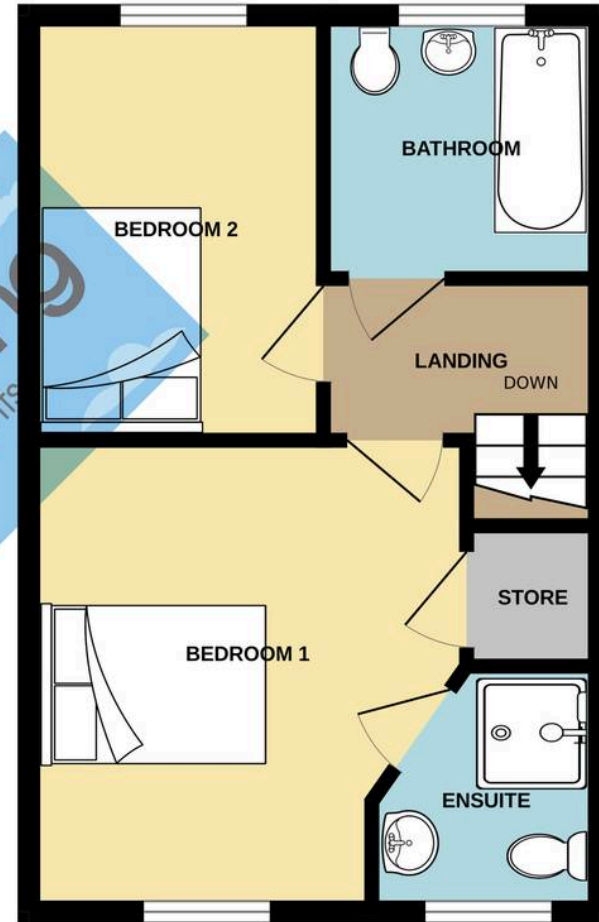




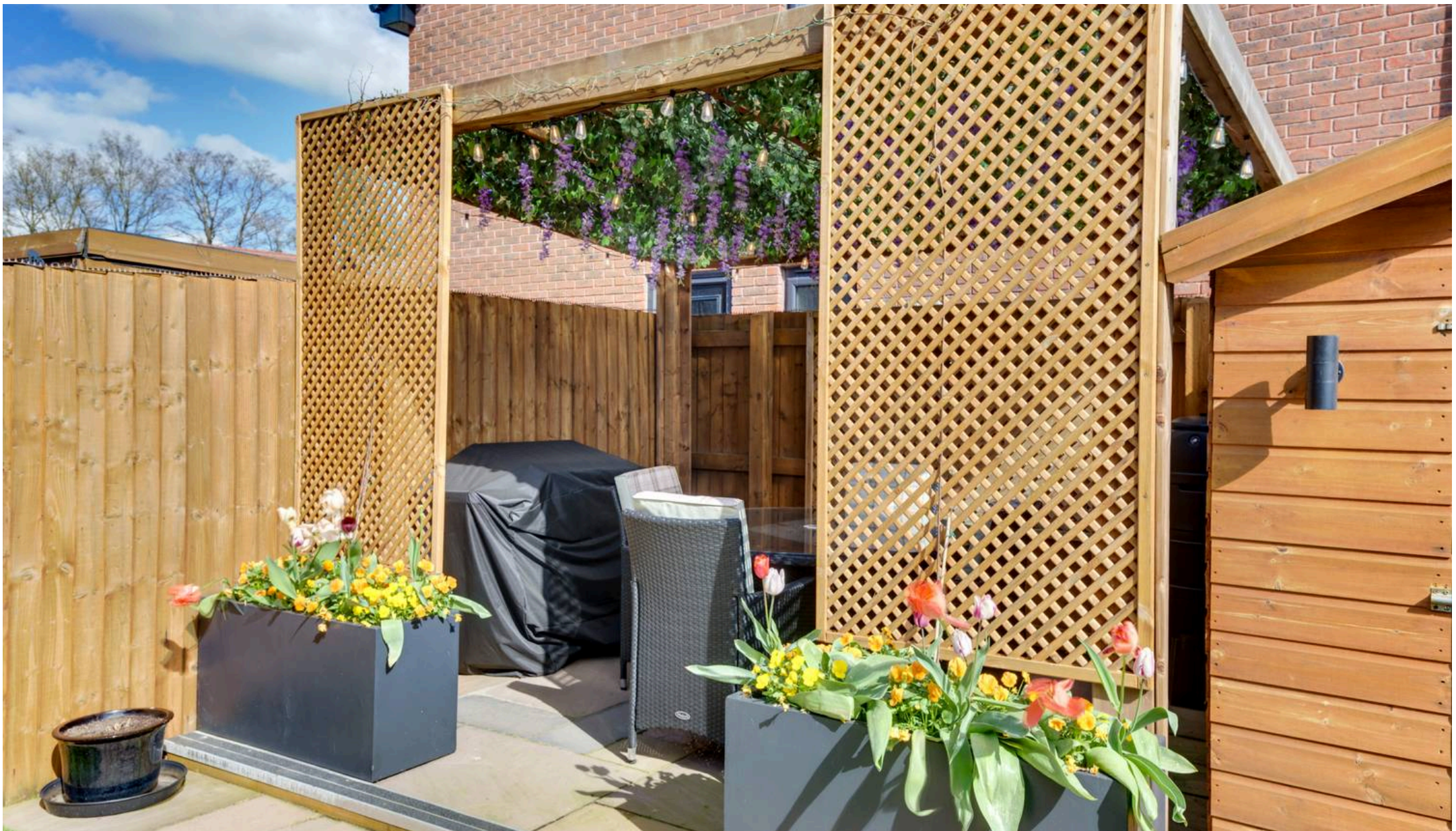
GROUND FLOOR



1ST FLOOR



Whilst every attempt has been made to ensure the accuracy of the floorplan contained here, measurements of doors, windows, rooms and any other items are approximate and no responsibility is taken for any error, omission or mis-statement. This plan is for illustrative purposes only and should be used as such by any prospective purchaser. The services, systems and appliances shown have not been tested and no guarantee as to their operability or efficiency can be given.
Made with Metropix ©2026



Chris Hamriding Lettings & Estate Agents

Chris Hamriding Lettings & Estate Agents, 9 High Street - CW12 1BN

01260543999 • Congleton@chrishamriding.co.uk • www.chrishamriding.co.uk/

As the Sellers agent, we are not Surveyors or Conveyancing experts and as such we cannot and do not comment on the condition of the property or other issues relating to title or other legal issues that may affect this property, unless we have been made aware of such matters. Interested parties should employ their own professionals to make such enquiries before making any transactional decisions. We have not carried out a structural survey and the services.