



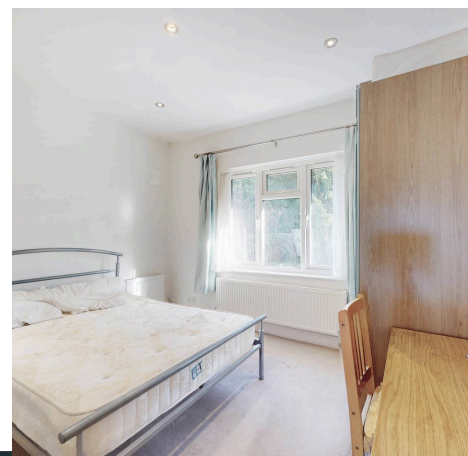
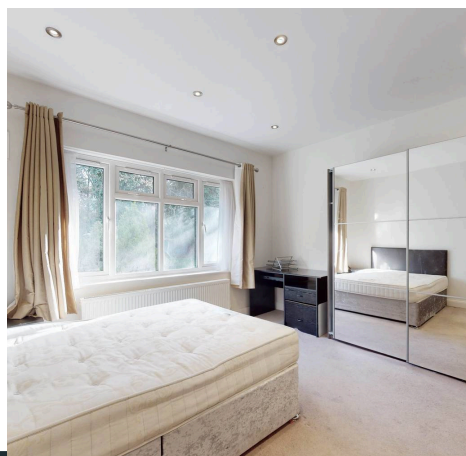
Pearl & Chance

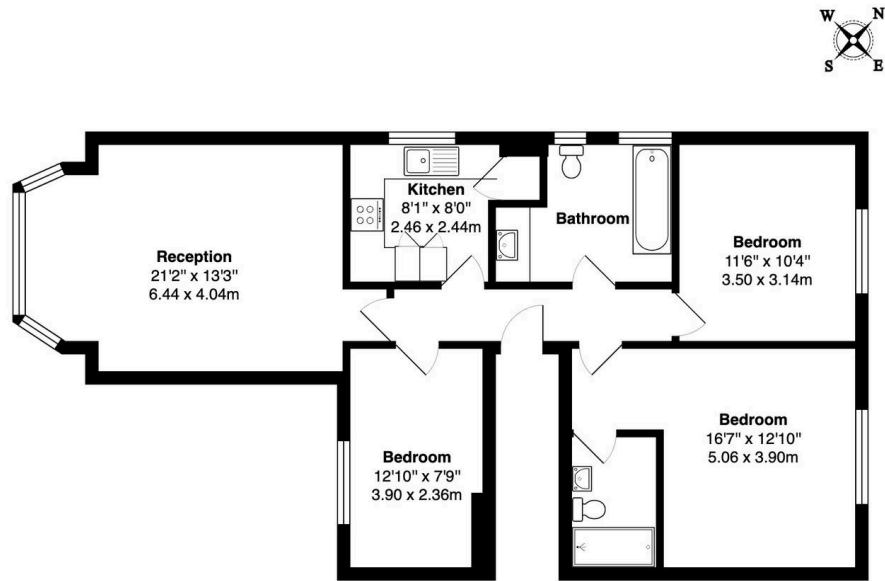
Finchley Road, London, NW11
£2,747 pcm

Finchley Road, London, NW11

Available 1st May. This spacious first-floor apartment is set in the sought-after Golders Hill Park area, just off Golders Green Road, and offers three double bedrooms and two bathrooms, including one en suite. The layout works well, with good natural light throughout, wooden flooring, and a modern kitchen fitted with granite worktops and quality appliances. The property is offered fully furnished and includes off-street parking, making it suited to professionals or a family. Golders Green Road and Golders Green Underground station are both within easy walking distance, with shops, coffee shops, and direct links into Central London close at hand, while Hampstead is just a short distance away.

- Available 1st May
- Deposit £3,169
- Council Tax Band: G
- Fully Furnished
- Three Double Bedrooms
- Two Bathrooms
- Wood Flooring
- Off Street Parking
- Close to Golders Hill Park
- Close to Golders Green Tube Station






1st Floor

Finchley Road, London, NW11
 Total Gross Area: 897 ft² ... 83.3 m²

All measurements are approximate and for identification guideline purposes only, not to scale.
 Compliant with the RICS code of measuring practice

Energy Efficiency Rating		
	Current	Potential
<i>Very energy efficient - lower running costs</i>		
(92+) A		
(81-91) B		81
(69-80) C	71	
(55-68) D		
(39-54) E		
(21-38) F		
(1-20) G		
<i>Not energy efficient - higher running costs</i>		
England, Scotland & Wales		EU Directive 2002/91/EC 



Pearl & Chance

1 Hoop Lane, London - NW11 8JR

0208 059 5559

info@pearlandchance.co.uk

<http://pearlandchance.co.uk>



IMPORTANT: These sales particulars have been prepared as a general guide only. A detailed survey has not been carried out, nor the services, appliances and fittings tested. Room sizes should not be relied upon for furnishing purposes and are approximate. If floor plans are included, they are for guidance only and illustration purposes only and may not be to scale. If there are any important matters likely to affect your decision to buy, please contact us before viewing the property.