

LEASEHOLD



Flat

LONG LEASE | LOW SERVICE CHARGES | WELL PRESENTED

Offers In Excess Of

£300,000

FEATURES

- Two Bedroom First Floor Apartment
- Well Presented Throughout
- Very Long Lease
- Low Service Charges
- Spacious Reception Room
- Allocated Parking
- Quiet Residential Development
- Convenient Location Close to Local Amenities



SPACE
RESIDENTIAL

2 Bedroom Flat located in Edgware

Space Residential are delighted to present this well-presented two-bedroom apartment situated within Sandringham Court on much sought after and in demand Priory Field Drive.

Offering bright and spacious accommodation throughout, the property comprises a generous reception room, separate fitted kitchen, two bedrooms and a family bathroom.

The property features a long lease and low service charges.

The property also benefits from resident parking and is located within easy reach of local shopping facilities, transport links and recreational amenities.

Contact Space Residential to arrange a viewing!

Call us on

0208 906 2222

info@spaceresidential.com
spaceresidential.com

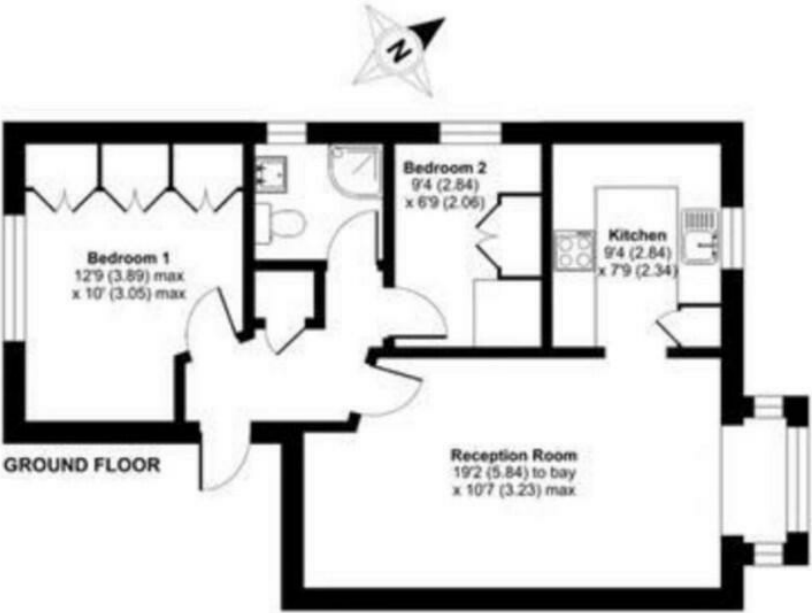
Council Tax Band

D

Priory Field Drive, Edgware, London, HA8

Approximate Area = 570 sq ft / 53 sq m

For identification only - Not to scale



Floor plan produced in accordance with RICS Property Measurement 2nd Edition, incorporating International Property Measurement Standards (IPMS Residential). © edgware 2021. Produced for Cow & Co Properties Ltd. 963 - 1271206

Energy Efficiency Rating		Current	Potential
<i>Very energy efficient - lower running costs</i>			
(92 plus) A			
(81-91) B			
(69-80) C			
(55-68) D		70	77
(39-54) E			
(21-38) F			
(1-20) G			
<i>Not energy efficient - higher running costs</i>			
England & Wales		EU Directive 2002/91/EC	

Agents Note: Whilst every care has been taken to prepare these particulars, they are for guidance purposes only. All measurements are approximate and are for general guidance purposes only and whilst every care has been taken to ensure their accuracy, they should not be relied upon and potential buyers are advised to recheck the measurements.

