



## 16 Drumfields, Cadoxton, Neath, Glamorgan, SA10 8AX

**£195,000**

Situated in the tranquil cul-de-sac of Drumfields, Cadoxton, Neath, this charming well presented two-bedroom end link home is ideally situated within walking distance of the town centre, making it perfect for those who appreciate convenience alongside a peaceful environment. Upon entering, you will find a welcoming entrance hallway, living room that provides a comfortable space for relaxation and entertaining. The kitchen is well-equipped, making it a joy for any home cook. Both bedrooms are generously sized doubles, ensuring ample space for rest and personalisation. The property boasts a beautifully appointed bathroom, complete with a modern W.C., adding to the overall appeal of the home. Outside, the property features parking for two vehicles at the front, a valuable asset in this area. The rear garden is enclosed and designed for low maintenance, allowing you to enjoy outdoor space without the burden of extensive upkeep. This home is perfect for first-time buyers, small families, or anyone seeking a peaceful retreat close to local amenities.

## Main Dwelling



## Front entrance hallway 9'10" x 6'1" (3.02m x 1.86m)



With laminate flooring, coved ceiling, radiator, stairs to first floor

## Hallway



## Kitchen 6'7" x 6'1" (2.01m x 1.86m)



With base and wall units in white with co-ordinating work surfaces, stainless steel sink unit, fitted electric oven, gas hob and extractor canopy over, space for washing machine and fridge and freezer, part tiled walls, tiled floor, wall mounted gas central heating boiler, double glazed window to front.



**Lounge 15'5" x 12'9" (4.70m x 3.89m)**

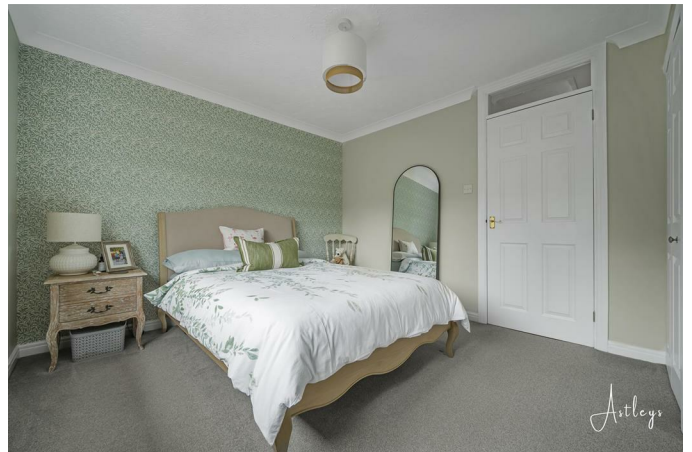


With cream feature fireplace with electric fire (not tested), double glazed sliding patio doors to rear garden, double glazed window to side, covered ceiling, radiator, understairs storage cupboard.



**Landing area 7'8" x 5'10" (2.34m x 1.79m)**  
With access to roof space, covered ceiling.

**Bedroom one 12'6" x 10'4" (3.83m x 3.17m)**



With two sets of double fitted wardrobes, radiator, covered ceiling, double glazed window to rear.



**Bathroom/w.c. 6'7" x 5'5" (2.03m x 1.66m)**



**Bedroom two 10'5" x 7'8" (3.18m x 2.36m)**



With double fitted wardrobe and single storage cupboard, radiator, coved ceiling, double glazed window to front.

Beautiful and newly installed in 2026 three piece suite in white comprising panelled bath with shower attachment to taps, wash hand basin on hi-gloss grey vanity unit, w.c., heated towel rail, cushion flooring, respatex to walls, double glazed window to side.



### Outside

### Front garden/parking



Front garden area with off-road parking for two vehicles to front. Side access gate to enclosed, private garden to the rear with paved patio, astroturf area and timber garden shed with power.

### Rear garden



## **AGENTS NOTE**

Council Tax Band C £2,259

## **AGENTS NOTE**

Mobile coverage

EE

Vodafone

Three

O2

Broadband

Basic

10 Mbps

Superfast

75 Mbps

Ultrafast

1800 Mbps

Satellite / Fibre TV Availability

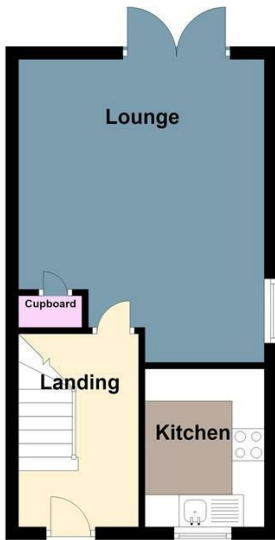
BT

Sky

Virgin

## Floor Plan

**Ground Floor**  
Approx. 27.7 sq. metres (298.4 sq. feet)

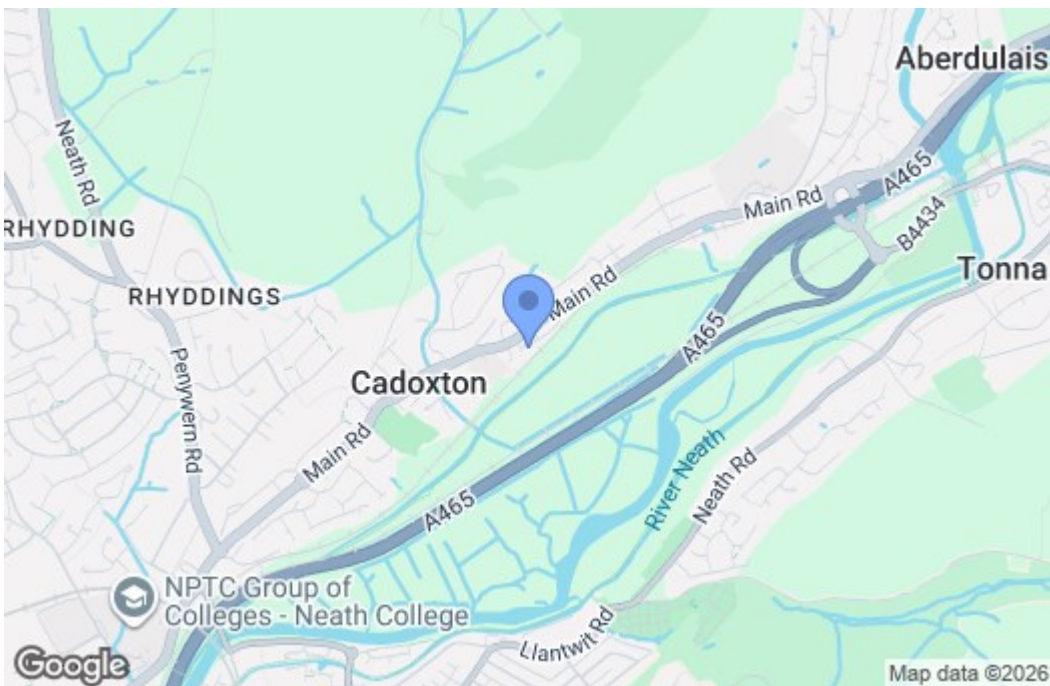


**First Floor**  
Approx. 27.7 sq. metres (298.4 sq. feet)

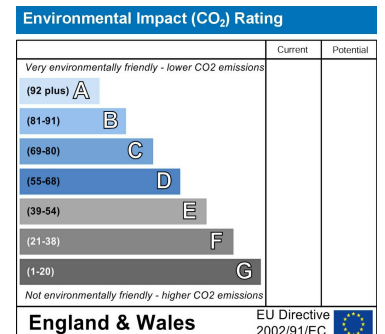
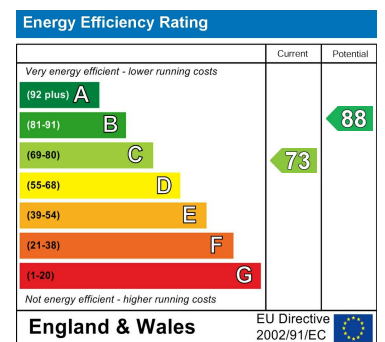


Total area: approx. 55.4 sq. metres (596.7 sq. feet)

## Area Map



## Energy Efficiency Graph



These particulars, whilst believed to be accurate are set out as a general outline only for guidance and do not constitute any part of an offer or contract. Intending purchasers should not rely on them as statements of representation of fact, but must satisfy themselves by inspection or otherwise as to their accuracy. No person in this firm's employment has the authority to make or give any representation or warranty in respect of the property.