



wards
Residential

39 Oakcroft Avenue, Kirby Muxloe, Leicester, LE9 2DH
£280,000

NO CHAIN! Ideally located within the desirable village of Kirby Muxloe, this two-bedroom detached bungalow offers spacious single-storey living with a generous garden, off-road parking, and a Garage. The accommodation comprises an Entrance Hall, a sizable Living Room, Kitchen, Conservatory, two well-proportioned Bedrooms and an accessible Bathroom. The bungalow is maintained throughout, with potential to update or extend (subject to relevant permissions) to suit modern lifestyles. UPVC double glazing & gas central heating with a newly installed boiler.

Entrance Hall

With UPVC paneled door leading to the Entrance Hall with access to the two Bedrooms, Bathroom, Living Room and Kitchen.

Kitchen

3.74 x 2.88 Meters

Fitted with wooden effect wall and base units, laminate work surfaces, stainless steel sink and drainer, tiled flooring, stand-alone oven, tiled splash backs, access to the Conservatory and UPVC double glazed windows.

Living Room

5.81 x 3.07 Meters

Carpeted with UPVC sliding French doors leading to the Garden.



Bedroom 1

3.48 x 3.07 Meters

Carpeted with UPVC double glazed window to the front elevation.

Bedroom 2

2.86 x 2.7 Meters

Carpeted with UPVC double glazed window to the front elevation.

Bathroom

2.7 x 1.15 Meters

Fitted with a three-piece white suite including a Low Flush WC, Pedestal Sink, and accessible walk-in Bath. Tiled flooring and a UPVC double glazed window to the side elevation.





Outside

With maintained gardens to the front, side and back elevations with shrubbery borders, grass area, a fishpond, paving and enclosed with timber fencing.

Front Elevation

There is a tarmac driveway with a front garden adjacent.



Conservatory

3.74 x 2.04 Meters

Fitted with wooden storage cupboards, tiled flooring and UPVC double glazed windows to the rear and side elevation.

Garage

Spacious single Garage with electric supply.

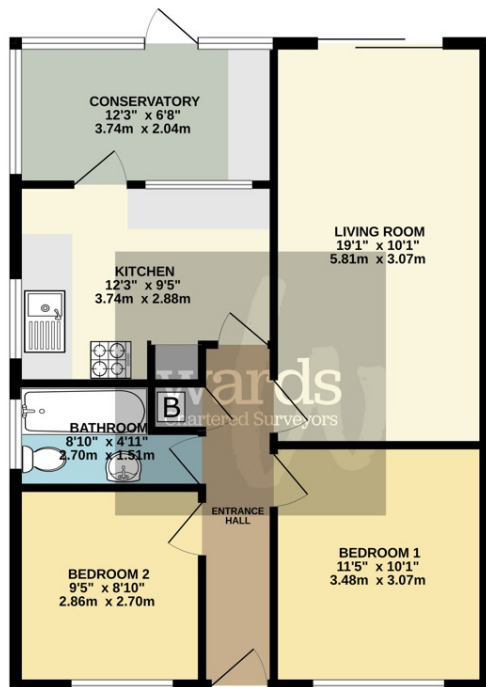
EPC- C (73)

Council Tax Band - C

Call 01455 251771 to make an appointment to view this property



GROUND FLOOR
681 sq.ft. (63.2 sq.m.) approx.



TOTAL FLOOR AREA: 681 sq.ft. (63.2 sq.m.) approx.
Whilst every attempt has been made to ensure the accuracy of the floorplan contained here, measurements of doors, windows, rooms and any other items are approximate and no responsibility is taken for any error, omission or mis-statement. This plan is for illustrative purposes only and should be used as such by any prospective purchaser. The services, systems and appliances shown have not been tested and no guarantee as to their operability or efficiency can be given.
Made with Metropix iC005

These particulars, whilst intended & believed to be accurate are set out as a general outline only and do not constitute any part of an offer or contract. Intending purchasers should not rely on them as statements of representation of fact, but must satisfy themselves by inspection or otherwise as to their accuracy. No person in this firm's employment has the authority to make or give any representation or warranty in respect of the property.



20 Station Road
Hinckley Leicestershire LE10 1AW

01455 251771
info@wardsonline.co.uk

wardsonline.co.uk



Ward Surveyors Limited - Registered in England No.4567836