



SIMPLE LIFE



SIMPLE LIFE

£500

To spend on your garden*
When you move in by the
31st May

*Available on selected properties

Roselands Avenue, Coventry, CV2

£1,350 PCM

** £500 TO SPEND ON YOUR GARDEN **

Welcome to Simple Life's Spirit Quarters, a multi-million pound regeneration project North East of Coventry. The development certainly lives up to its name with a vibrant community spirit throughout the neighbourhood.

Split across three floors, the Bamburgh is a very popular home with growing families. The property offers plenty of space with a large living room, French windows leading to your private back garden and a large open-plan kitchen/dining room. The ground floor also benefits from a WC.

The first floor features two double bedrooms with a family bathroom, complete with both a bath and shower. At the end of the hall you will find a door opening on to a separate lobby area (often used as a small office). This leads on to a very desirable master bedroom and en-suite shower room on the second floor, offering the perfect peaceful getaway.

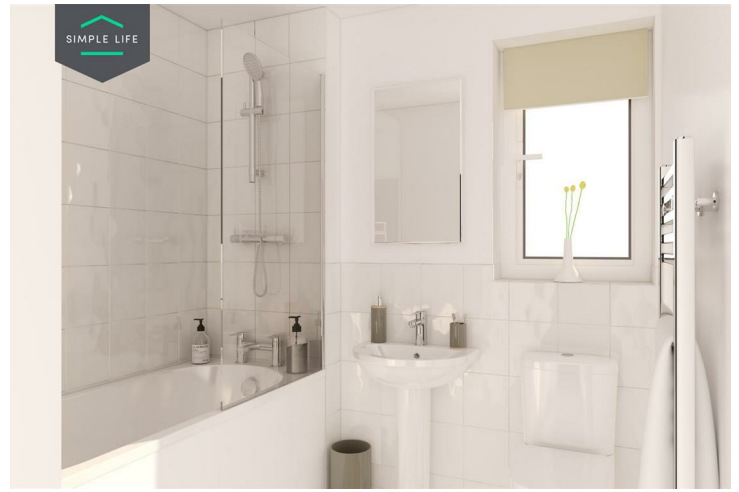
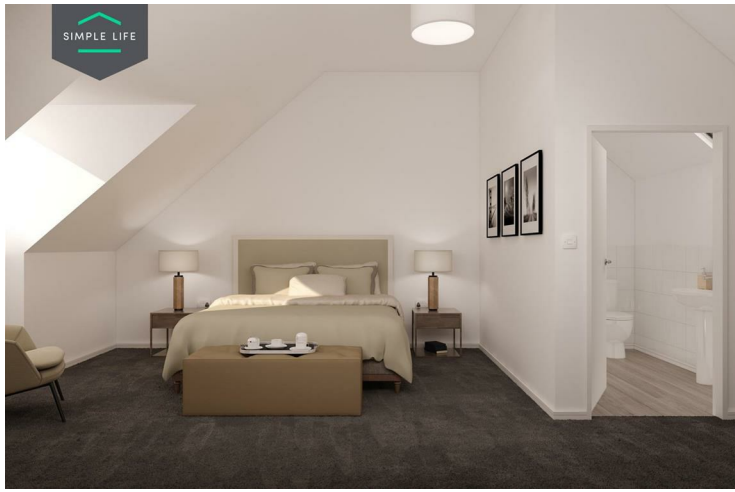
With new-build housing, beautiful green spaces, plenty of local transport links and employment opportunities, the area has been completely transformed and is now recognised as a very desirable place to make home.

Situated just 3 miles from the city centre, the site boasts an array of local parks and leisure facilities including Moat House Leisure, Moat House Park, Woodway Walk and many more.

The site also proven very attractive for young families with plenty of good local schools such as Moat House Primary, St. Patrick's Catholic Primary and Henley Green Primary schools.

Deposit: £1550
Holding Deposit: £310
Unfurnished
Council tax: B
Available 8th May 2026





Key Features

- Car Parking Space
- Dishwasher
- Washing/drying machine
- Carpets up the stairs and in the bedrooms
- Blinds in the bedrooms
- Security Alarm
- Fridge-freezer
- Modern kitchen worktops and units
- Private back garden

Location

