

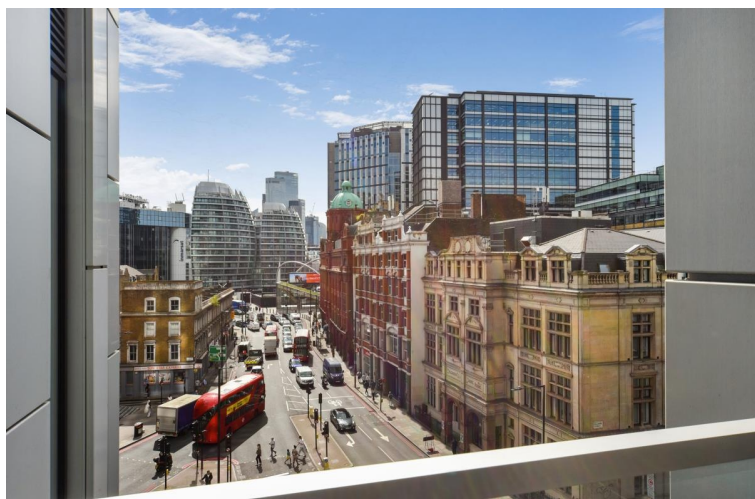
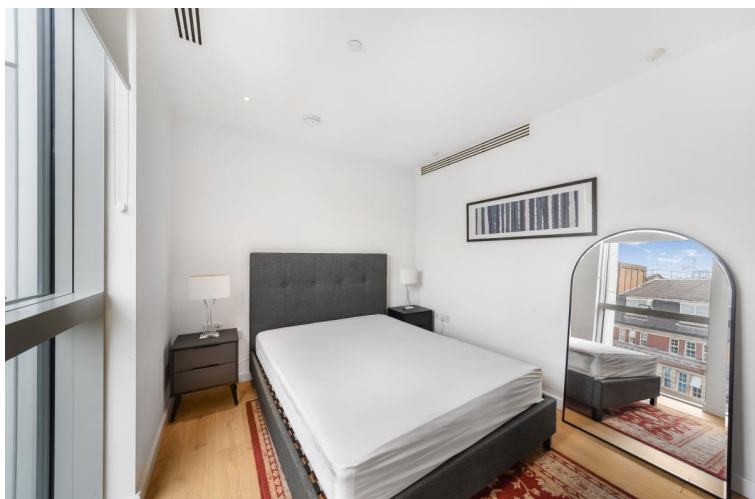


City Road, London EC1V

Price £740 per week - Furnished







Description

Located on the third floor, this impressive 552 sq ft apartment features a beautifully proportioned open-plan living area with floor-to-ceiling windows that flood the space with natural light and open onto a generous private balcony.

The spacious dual-aspect bedroom flows seamlessly from the main living area, complemented by a stylish family bathroom and ample built-in storage throughout the welcoming entrance hallway.

Residents enjoy world-class amenities including a swimming pool, spa, state-of-the-art gym, private cinema, exclusive business lounge, and 24-hour concierge service. Each apartment features climate control for year-round comfort. The Atlas Building's prime location places you just 0.1 miles from Old Street station with easy access to the City, Hoxton, Shoreditch, and Angel.

Council tax band: E. Rent is payable on a monthly basis, and you may be required to pay more than a month's rent in advance for tenancies with annual rents exceeding £100,000. You will be required to pay a 1 week holding deposit following a successful offer. Tenancies with annual rents up to £50,000 will require a 5 weeks' security deposit, while those exceeding this threshold will require a 6 weeks' deposit. Utility bills, council tax, telephone line and broadband are not included in the rent. As well as paying the rent, you may also be required to make some additional permitted payments. If your tenancy does not qualify as an APT, additional fees may apply. Please visit jll.co.uk/fees for details of fees that may be payable when renting a property. To check broadband and mobile phone coverage please visit Ofcom here ofcom.org.uk/phones-telecoms-and-internet/advice-for-consumers/advice/ofcom-checker

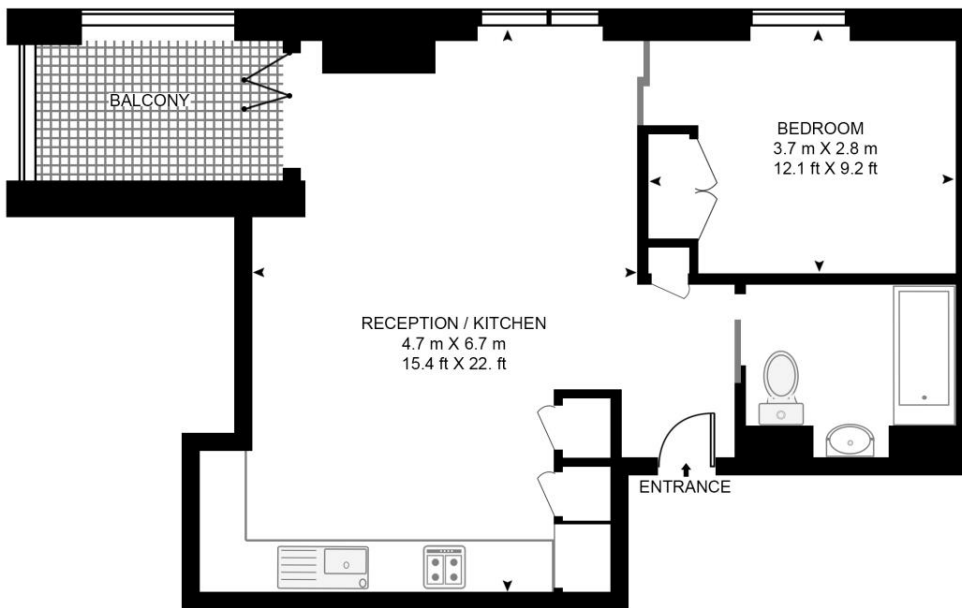
- Bright one bedroom apartment
- Dual aspect bedroom
- Impressive Floor to ceiling windows
- Private balcony
- A host of luxury amenities
- Gym, Swimming pool, Screening & lounge rooms and 24hr concierge
- Generous 552 sq ft of thoughtfully designed living space
- 3rd floor
- Old Street station (0.1 mile)
- Ideally located for the City, Hoxton, Shoreditch and Angel

Floorplan

552 sq ft | 51 sq m

ATLAS BUILDING, 145 CITY ROAD

APPROXIMATE GROSS INTERNAL FLOOR AREA 552 SQ.FT (51.3 SQ.M)



THIRD FLOOR



This floor plan has been defined by the RICS Code of Measurement. This floor plan and all others are for approximate representative purposes only and upon usage is agreed to as such by the client.
WWW: hdvirtualart.com | TEL: 0203.974.1567 | EMAIL: info@hdvirtualart.com

City
25 Walbrook The Walbrook
Building,
London EC4N 8AF
+4420 7337 4000

Urban living, your way.

jll.co.uk/residential

© 2019 Jones Lang LaSalle IP, Inc. All rights reserved. All information contained herein is from sources deemed reliable; however, no representation or warranty is made to the accuracy thereof.

