



Bird In Bush Road, SE15

£400,000

A two double bedroom lower ground floor flat on Bird In Bush Road in the heart of Peckham. The property benefits from its own private entrance, a south facing garden and a share of the freehold.

Bird In Bush Road is perfectly located for the open spaces of Burgess Park and Peckham Rye Park. Queen's Road Peckham is the nearest station providing overground services to Shoreditch High Street and Clapham Junction with frequent bus routes into Central London.

Features

- Private Entrance
- No Onward Chain
- South Facing Garden
- Share Of Freehold
- Open Plan Living
- Amenities Nearby

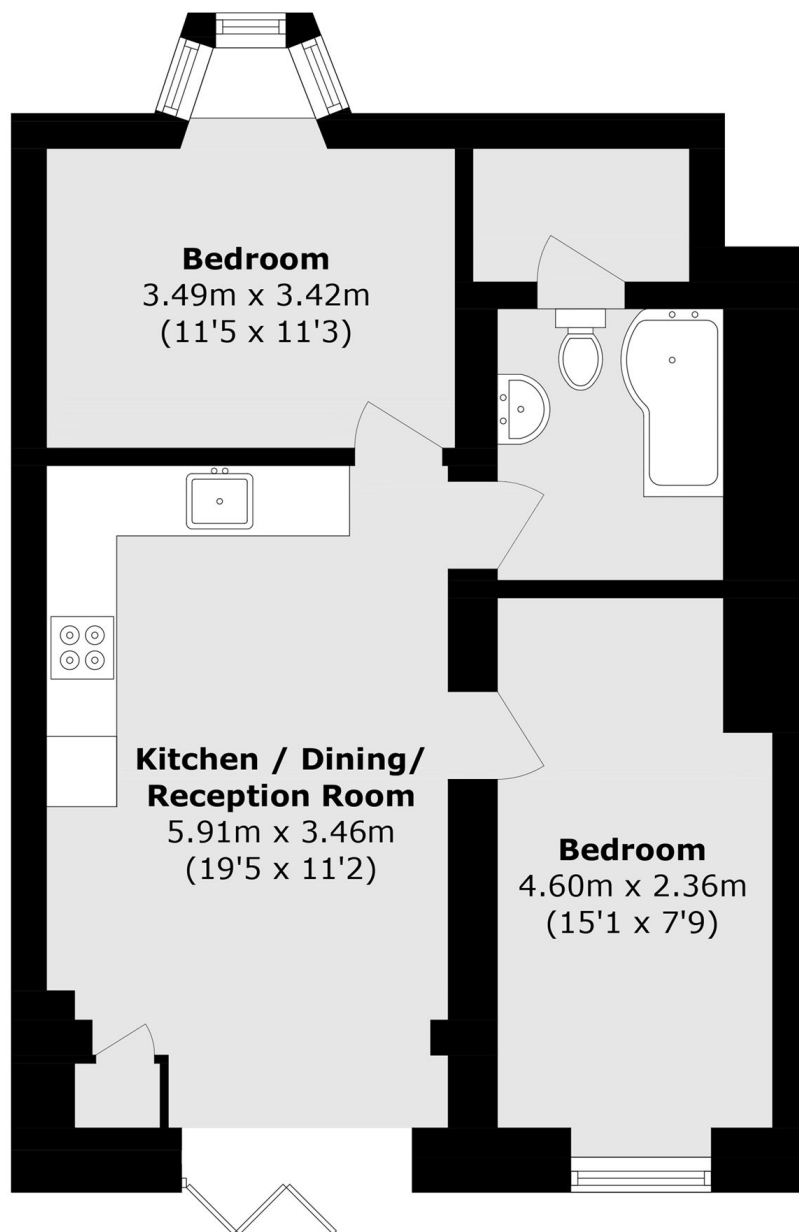


Bird In Bush Road, SE15

The property centres around an impressive open plan kitchen, dining and reception space, creating a sociable and versatile living area. The kitchen is thoughtfully arranged with ample worktop and storage space, while the reception area comfortably accommodates both lounge furniture and a dining table. Large bifold doors open directly onto a south facing decked garden, allowing natural light to flood the room and providing a seamless transition between indoor and outdoor space. Both bedrooms are doubles and are served by a spacious bathroom fitted with a full-size bath and modern fixtures. The property is being sold with no onward chain.



Bird In Bush Road, London, SE15



Total area (approx.): 53.4 sq. m (574.7 sq. ft)