

Home is
EVERYTHING



BEAUTIFUL SPACES.
BETTER LIVING.



QUALITY
CRAFTSMANSHIP



TIMELESS
DESIGN



MADE FOR
MEMORIES

in the heart of
Frampton Cottrell

Cherry Tree House, Plot 2, Rockside Gardens,
Frampton Cotterell, BS36 2HL

Guide Price: £700,000

The Croft is an exclusive private development of five detached homes, ideally located in the heart of Frampton Cotterell. These unique properties enjoy far-reaching views across the Frome Valley and feature high-quality modern specifications, including air source heat pumps, underfloor heating, solar panels, and EV charging points — all thoughtfully designed for contemporary living.

Built using traditional construction methods and local pennant stone, these homes successfully combine timeless craftsmanship with modern innovation.

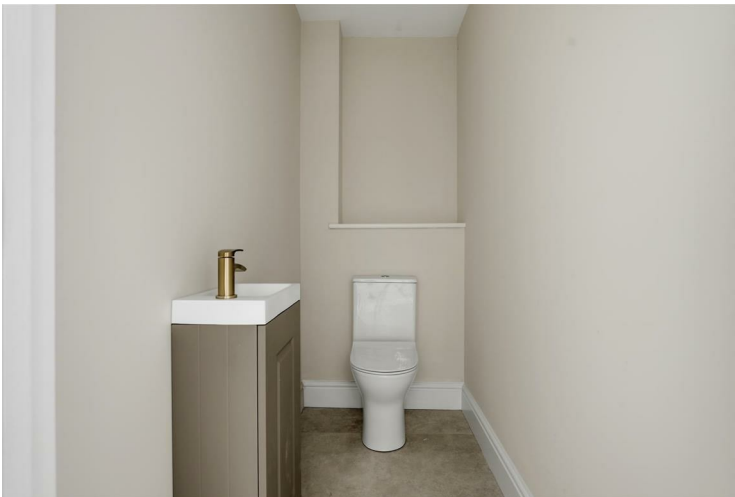
- **PLOT 2 Executive Detached House**
- **4 Double Bedrooms**
- **Open Plan Kitchen/Family Room**
- **Living Room**
- **Study**
- **Ensuite & Family Bathroom**
- **Good Sized Garden**
- **Garage & Parking**
- **Under Floor Heating**
- **Air Source Heat Pumps**









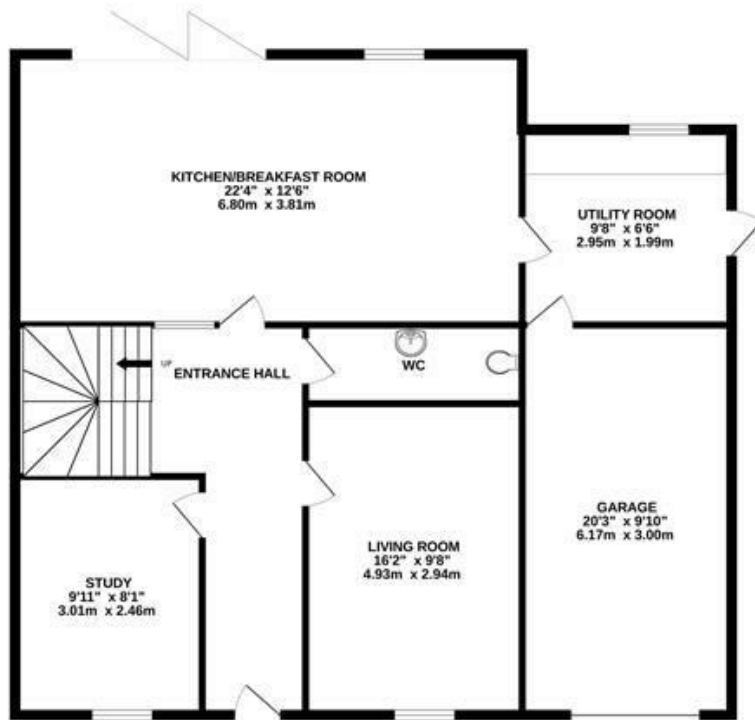




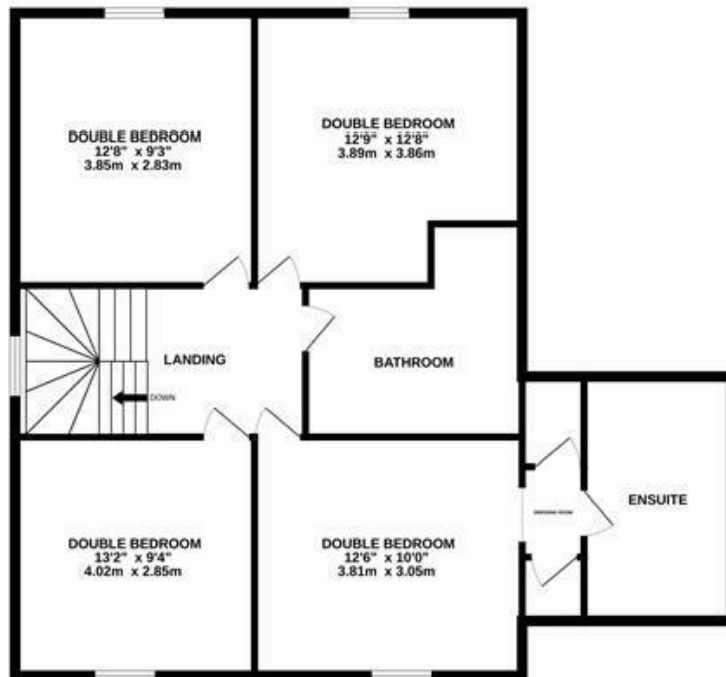


The photographs shown are a mixture of Plot 2 and of Plot 3 and include digitally enhanced images. This is due to the current construction status of Plot 2.

GROUND FLOOR



1ST FLOOR



Measurements are approximate. Not to scale. Illustrative purposes only
Made with Metropix ©2026

4 Flaxpits Lane
Winterbourne
Bristol
BS36 1JX

www.aj-homes.co.uk
info@aj-homes.co.uk
01454 252140

Agents Note: Whilst every care has been taken to prepare these sales particulars, they are for guidance purposes only. All measurements are approximate and for general guidance purposes only and whilst every care has been taken to ensure their accuracy, they should not be relied upon and potential buyers are advised to recheck the measurements