



SPINDLEWOOD

Wentworth | Surrey



A STUNNING RESIDENCE ON THE ICONIC WENTWORTH ESTATE

Spindlewood offers a rare opportunity to acquire an outstanding home in turnkey condition on one of Surrey's most exclusive estates.

			EPC
6	6	5	B

Local Authority: Runnymede Borough Council

Council Tax band: H

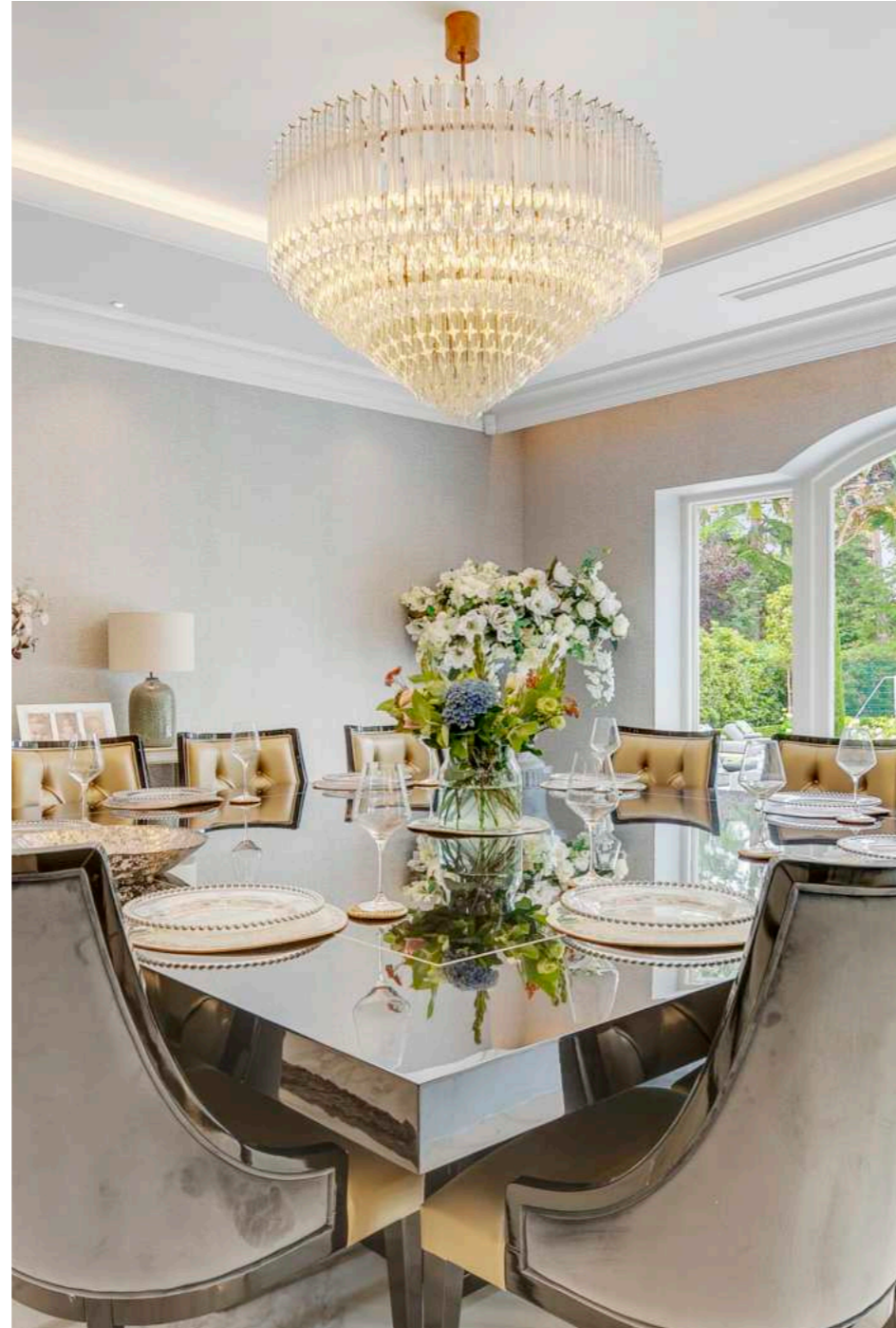
Tenure: Freehold



This immaculate six-bedroom, six-bathroom home is the epitome of luxury living. Built only three years ago, the property presents as-new throughout, combining classical elegance with contemporary finishes.

Upon entering, you are welcomed into an impressive double-height, marble-floored entrance hall with a sweeping staircase that sets the tone for the rest of the house.

Beyond the entrance, the home opens into a beautifully designed open-plan kitchen, dining, and living area. The bespoke kitchen is centred around a large island. The adjoining living space offers a sophisticated yet comfortable environment, featuring floor-to-ceiling glazed doors that open out to the garden.



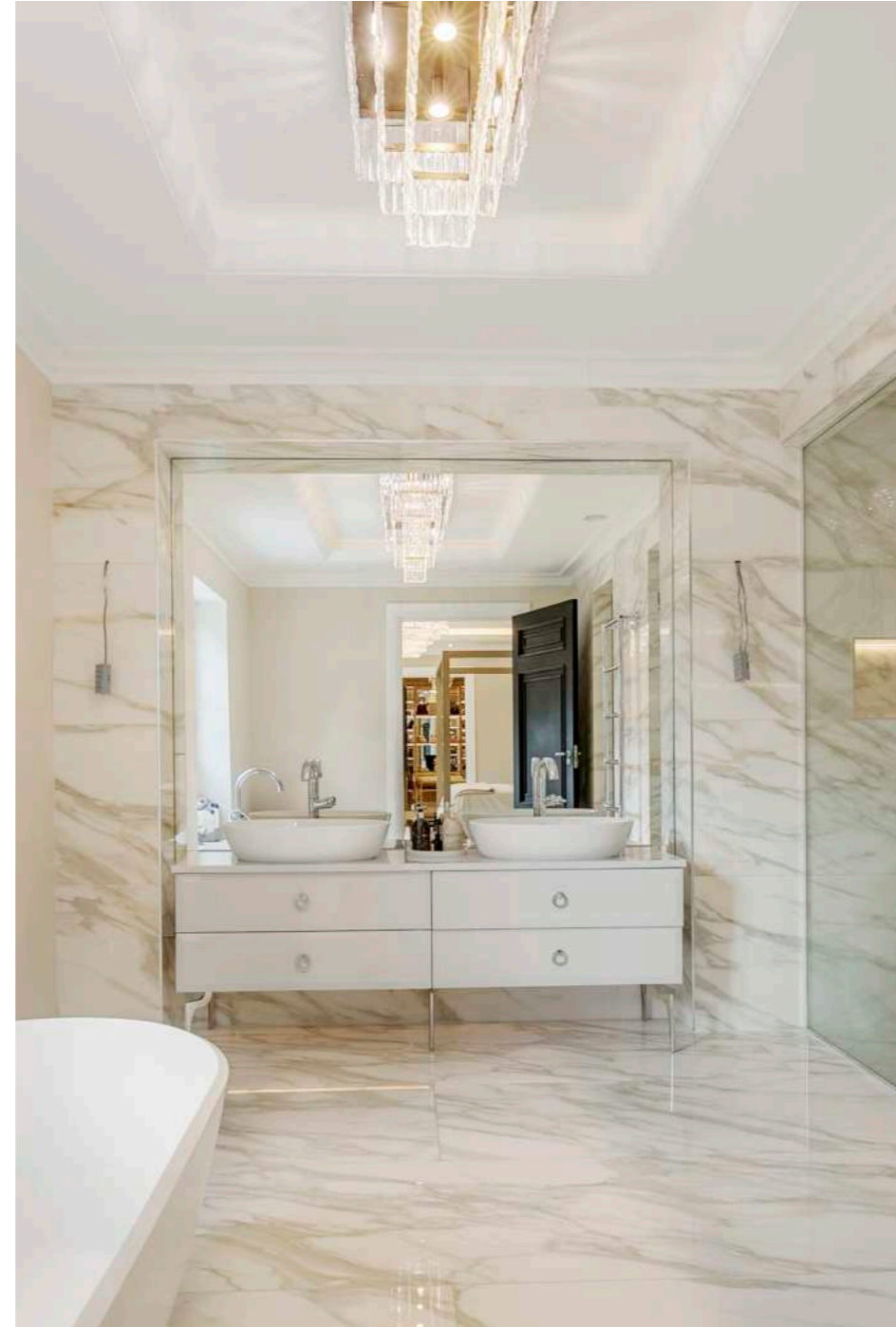


The home continues its theme of refined luxury with a beautifully appointed principal suite and accompanying dressing and bathing spaces, each designed with both style and functionality in mind.

The bedroom offers generous proportions and mirrored detailing that reflects light beautifully throughout the space. The bespoke dressing room is fitted with custom cabinetry, illuminated shelving, and glass-fronted display units, providing ample storage for clothing, shoes, and accessories.

The bathroom is finished to an exceptional standard, featuring elegant marble throughout, creating a spa-like atmosphere. A sleek double vanity with twin basins, a freestanding bath and a spacious walk-in rainfall shower all deliver comfort and sophistication.

Consistent with the home's refined aesthetic, the additional bedrooms continue to showcase generous proportions, elegant detailing, and a thoughtful balance of comfort and practicality.



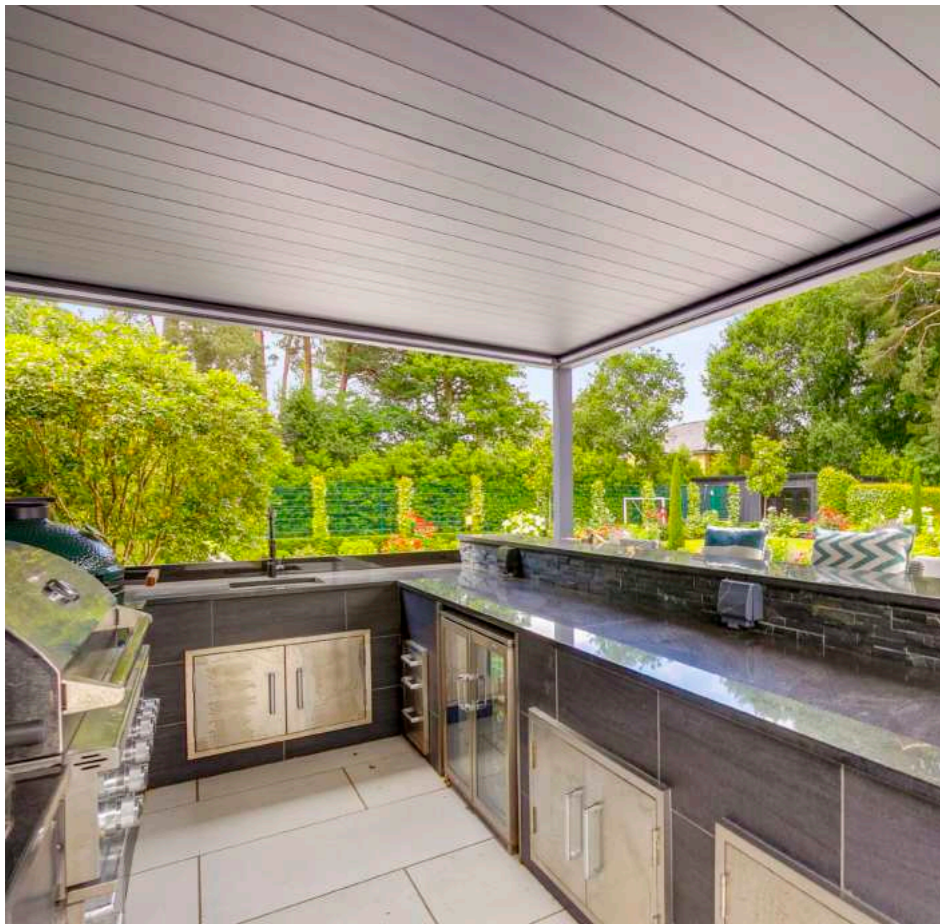


Virginia Water Village offers an excellent range of day to day shops, restaurants and a mainline station with trains to London Waterloo in approximately 42 minutes. Communications are excellent with the M3 and M4 close by, giving fast access to London, the M25 and the national motorway network, as well as Heathrow and Gatwick airports.

The area is renowned for its excellent selection of schooling such as Papplewick Preparatory School, St George's Boys School, St Mary's Girls School and ACS International in Egham.

Sporting facilities in the area are numerous and include racing at Ascot and Windsor, polo at Smith's Lawn, Windsor Great Park and the Royal County of Berkshire Polo Club in Winkfield.





The exterior of the property is equally impressive, offering a private and beautifully landscaped setting designed for both relaxation and entertaining. At the centre of the garden lies a striking swimming pool, finished with elegant tiling and surrounded by a spacious stone terrace. Contemporary loungers line the poolside, creating a tranquil resort-style atmosphere.

A covered outdoor kitchen and bar area is fitted with high-quality appliances and sleek worktops, providing the perfect space for alfresco entertaining throughout the year, whether hosting gatherings or enjoying more relaxed family moments.

A dedicated sports area with artificial turf adds further versatility, ideal for recreation and family activities.





Approximate Gross Internal Area = 8,419 sq.ft. / 782.13 sq.m.

This plan is for layout guidance only. Not drawn to scale unless stated. Windows and door openings are approximate. Whilst every care is taken in the preparation of this plan, please check all dimensions, shapes and compass bearings before making any decisions reliant upon them. (ID767266)

We would be delighted
to tell you more.

Tom Hunt

+44 2081061409

tom.hunt@knightfrank.com

Knight Frank Ascot & Virginia Water

20 Station Approach, Surrey

GU25 4DW

Edward Shaw

+44 1344293140

edward.shaw@knightfrank.com

[knightfrank.co.uk](https://www.knightfrank.co.uk)

Your partners in property

1. Particulars: These particulars are not an offer or contract, nor part of one. You should not rely on statements given by Knight Frank in the particulars, by word of mouth or in writing ("information") as being factually accurate about the property, its condition or its value. Neither Knight Frank nor any joint agent has any authority to make any representations about the property, and accordingly any information given is entirely without responsibility on the part of Knight Frank. 2. Material Information: Please note that the material information is provided to Knight Frank by third parties and is provided here as a guide only. While Knight Frank has taken steps to verify this information, we advise you to confirm the details of any such material information prior to any offer being submitted. If we are informed of changes to this information by the seller or another third party, we will use reasonable endeavours to update this as soon as practical. 3. Photos, Videos etc: The photographs, property videos and virtual viewings etc. show only certain parts of the property as they appeared at the time they were taken. Areas, measurements and distances given are approximate only. 4. Regulations etc: Any reference to alterations to, or use of, any part of the property does not mean that any necessary planning, building regulations or other consent has been obtained. A buyer must find out by inspection or in other ways that these matters have been properly dealt with and that all information is correct. 5. Fixtures and fittings: A list of the fitted carpets, curtains, light fittings and other items fixed to the property which are included in the sale (or may be available by separate negotiation) will be provided by the Seller's Solicitors. 6. VAT: The VAT position relating to the property may change without notice. 7. To find out how we process Personal Data, please refer to our Group Privacy Statement and other notices at <https://www.knightfrank.com/legals/privacy-statement>.

Particulars dated May 2026. Photographs and videos dated May 2026. All information is correct at the time of going to print. Knight Frank is the trading name of Knight Frank LLP. Knight Frank LLP is a limited liability partnership registered in England and Wales with registered number OC305934. Our registered office is at 55 Baker Street, London W1U 8AN. We use the term 'partner' to refer to a member of Knight Frank LLP, or an employee or consultant. A list of members names of Knight Frank LLP may be inspected at our registered office. If you do not want us to contact you further about our services then please contact us by either calling 020 3544 0692, email to marketing.help@knightfrank.com or post to our UK Residential Marketing Manager at our registered office (above) providing your name and address.