



Daysbrook Road, SW2

£465,000

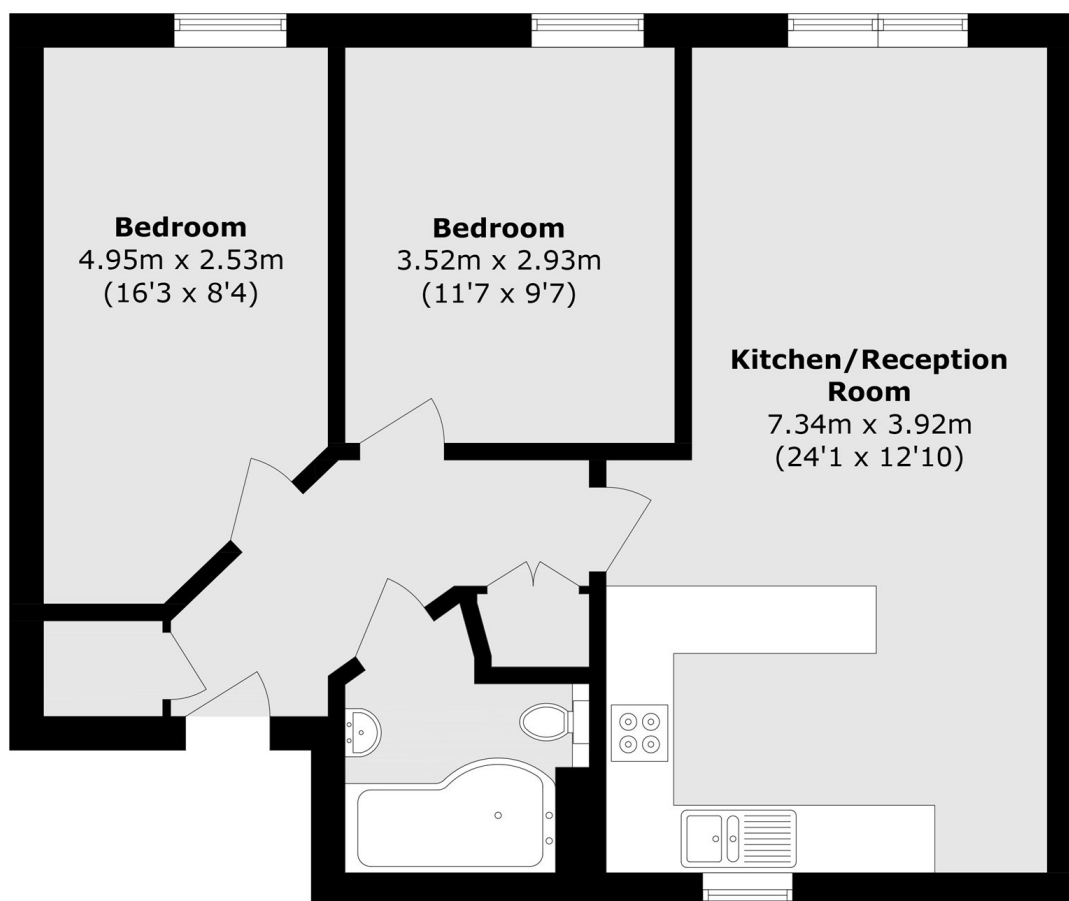
Measuring over 650 sq ft, this two double bedroom flat is set within a modern building and benefits from a shared garden, an open-plan kitchen/living area, and is offered to the market with no onward chain. The property also benefits from off street parking, secure bike storage and lift access.

Daysbrook Road is conveniently located within a short walk of local shops and amenities. Streatham Hill station and Brixton Underground are within easy reach, providing excellent transport links into the City via London Victoria.

Features

- Two Double Bedrooms
- Open Plan Living/Kitchen
- Shared Garden
- Bike Storage
- Off Street Parking
- No Onward Chain

Daysbrook Road, London, SW2



Total area (approx.): 60.4 sq. m (650.1 sq. ft)