



Garford Street, E14

£675 Per week

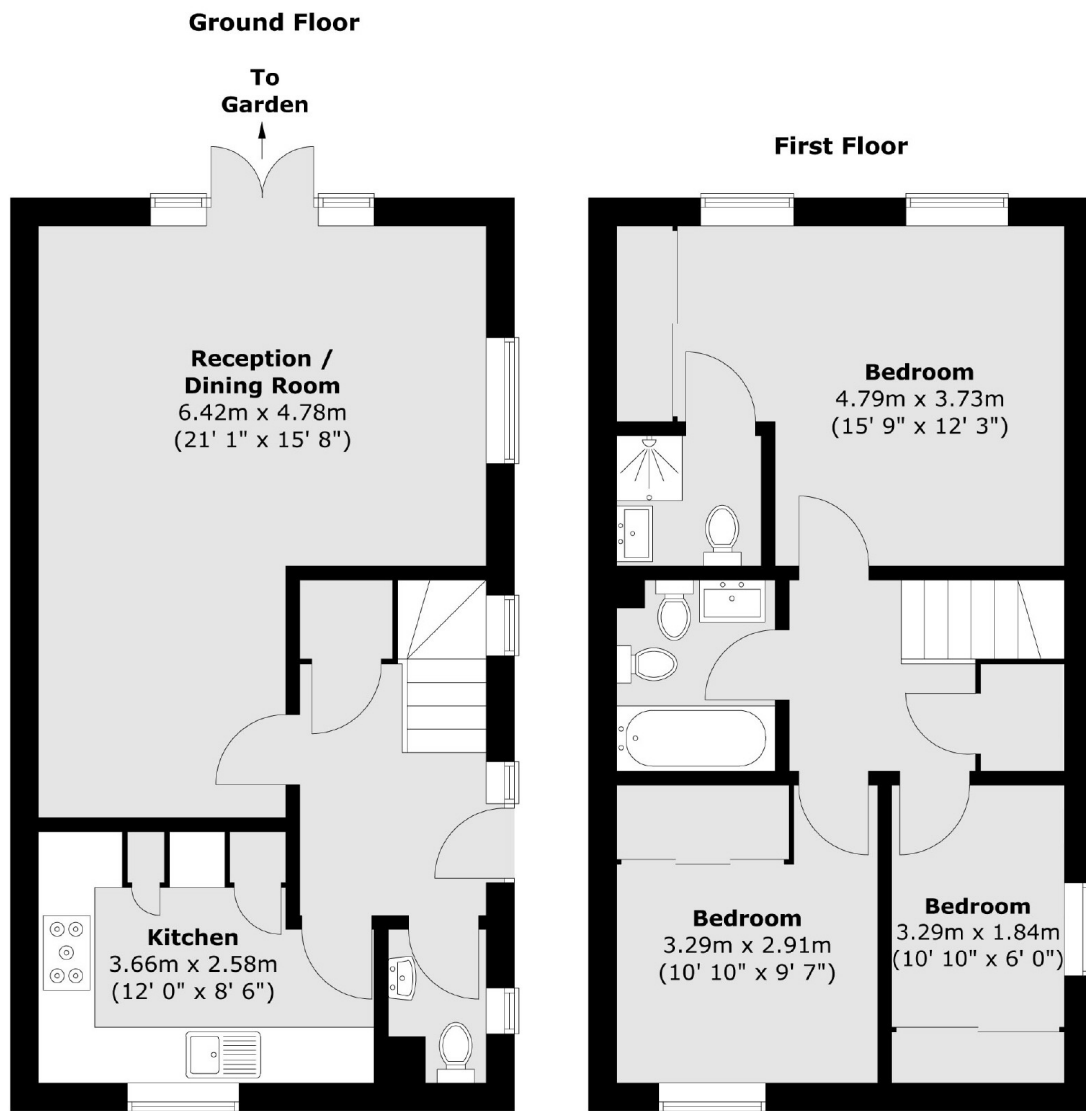
A three bedroom two bathroom semi detached house. With wood flooring, built in storage, private garden and driveway.

Garford Street is a short walk from the shops, bars and restaurants of Canary Wharf.

Features

- Three Bedrooms
- Two Bathrooms
- Separate Kitchen
- Wood Flooring
- Private Garden
- Parking

Garford Street, London, E14



Total area (approx.) : 88.7 sq. m (955 sq. ft)