



FOUNTAIN HOUSE, SW6

£795,000

This wonderful lateral apartment is arranged over the fifth floor of a contemporary building in Imperial Wharf and boasts far reaching views towards Fulham.

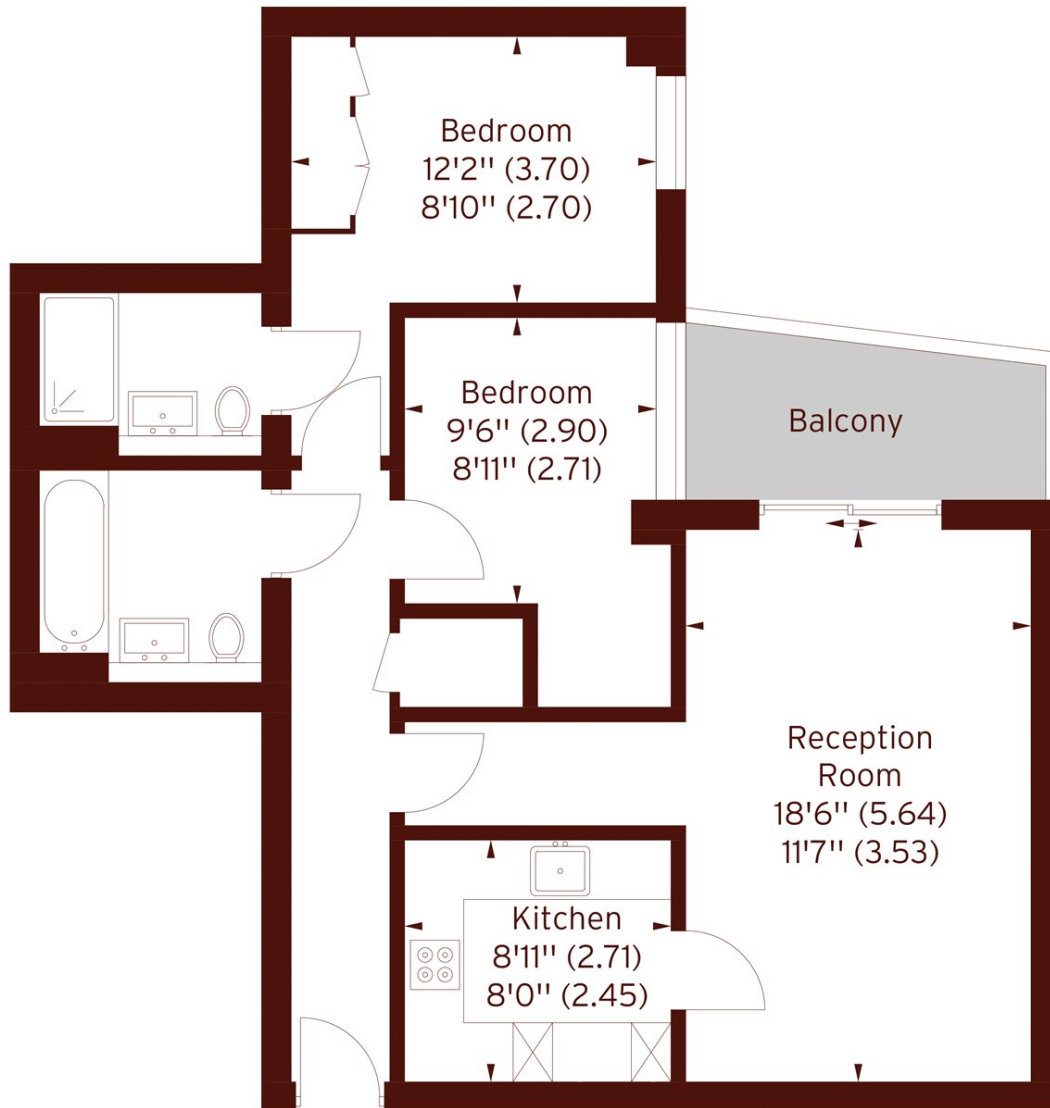
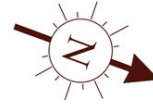
Two double bedrooms
Two bathrooms
Balcony

24 hour concierge
Excellent condition
Energy rating: c

STEP INSIDE FOUNTAIN HOUSE

The Boulevard, SW6

APPROX. GROSS INTERNAL FLOOR AREA 764 SQFT / 71 SQM



FIFTH FLOOR

The floor plan is not to scale and measurements and areas shown are approximate and therefore should be used for illustrative purposes only. The plan has been prepared in accordance with the RICS code of measuring Practice and whilst we have confidence in the information produced, it must not be relied on. If there is any aspect of particular importance, you should carry out or commission your own inspection of the property.

Fulham
020 7736 9822

Energy Rating: We aim to make our particulars both accurate and reliable. However, they are not guaranteed; nor do they form part of an offer or contract. If you require clarification on any points then please contact us, especially if you're traveling some distance to view. Please note that appliances and heating systems have not been tested and therefore no warranties can be given as to their good working order

MARSH &
PARSONS