

for sale

£300,000



Ethelstan Crescent Hereford HR2 7HR

A well-presented extended semi-detached family home which is positioned in a popular and convenient location. This wonderful home offers large room's throughout making this the perfect home for growing families to enjoy.

Ethelstan Crescent Hereford HR2 7HR

Entrance Porch

Double glazed door, one centre light point.

Lounge

Double glazed window, central heated radiator, one centre light point, two wall light points.

Dining Room

Double glazed window, one central heated radiator, one centre light point.

Kitchen

Double glazed window, double glazed door, one central heated radiator, spotlights.

Conservatory

Double glazed windows from bottom to top, Double glazed French doors, two ceiling lights.

Shower Room

Shower cubicle, double glazed window, W.C, wash basin, one central heated radiator, spotlights.



Landing

Storage cupboard, two centre light points, access to boarded loft.

Bedroom One

Two double glazed windows, one central heated radiators, two light points.

Bedroom Two

Double glazed window, one central heated radiator, one centre light point.

Bedroom Three

Double glazed window, one central heated radiator, one centre light point.

Bedroom Four

Double glazed window, one central heated radiator, one centre light point.

Bathroom

W.C, wash basin, Double glazed window.

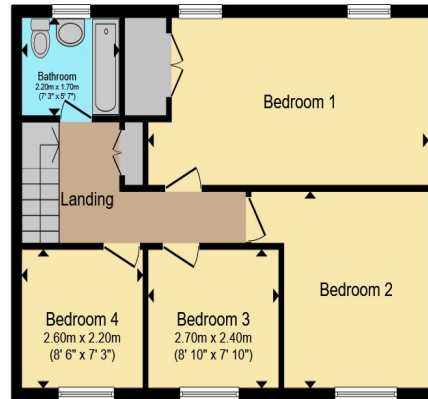
Parking

Dropped curb to block paved drive.





Ground Floor



First Floor

Total floor area 126.8 m² (1,365 sq.ft.) approx

This floor plan is for illustrative purposes only. It is not drawn to scale. Any measurements, floor areas (including any total floor area), openings and orientation are approximate. No details are guaranteed, they cannot be relied upon for any purpose and they do not form part of any agreement. No liability is taken for any error, omission or misstatement. A party must rely upon its own inspection(s). Powered by www.propertybox.io



To view this property please contact Connells on

T 01432 267 511
E hereford@connells.co.uk

23 King Street
 HEREFORD HR4 9BX

Property Ref: HER316468 - 0004

Tenure:Freehold EPC Rating: D

Council Tax Band: D

view this property online connells.co.uk/Property/HER316468



1. MONEY LAUNDERING REGULATIONS Intending purchasers will be asked to produce identification documentation at a later stage and we would ask for your co-operation in order that there will be no delay in agreeing the sale. 2. These particulars do not constitute part or all of an offer or contract. 3. The measurements indicated are supplied for guidance only and as such must be considered incorrect. Potential buyers are advised to recheck measurements before committing to any expense. 4. We have not tested any apparatus, equipment, fixtures, fittings or services and it is in the buyers interest to check the working condition of any appliances.

Connells Residential is registered in England and Wales under company number 1489613, Registered Office is Cumbria House, 16-20 Hockliffe Street, Leighton Buzzard, Bedfordshire, LU7 1GN. VAT Registration Number is 500 2481 05.

see all our properties at www.connells.co.uk | www.rightmove.co.uk | www.zoopla.co.uk