



Folgate Street, E1

£775,000

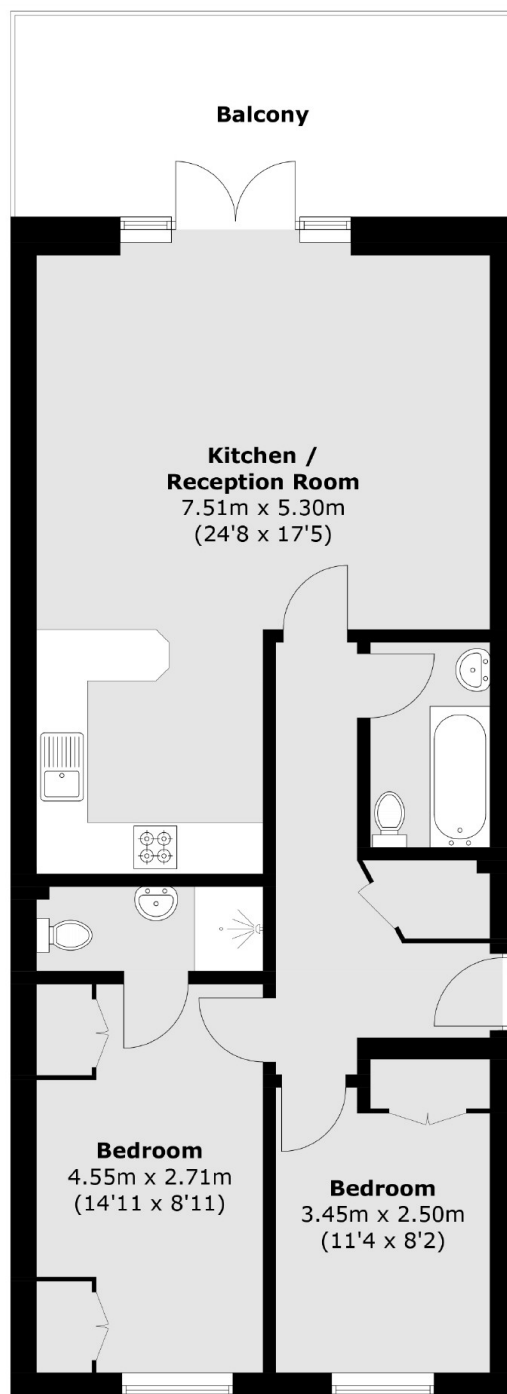
A two-bedroom, two-bathroom apartment located on the first floor of this period development. This apartment offers a large open plan kitchen/living room, two double bedrooms, one with an en-suite bathroom, a modern family bathroom, plenty of built-in storage, and wooden floors throughout.

Folgate Street is a cobbled stoned street located on the edge of Spitalfields Market. The location offers a wide range of fashionable shops, bars, restaurants, entertainment and transport links in Brick Lane, Liverpool Street and Shoreditch.

Features

- Two Bedrooms
- Two Bathrooms
- Sought after location
- Secure underground parking
- Day time porter
- Private Balcony

Folgate Street,
London, E1



Total area (approx.): 70.5 sq. m (758.8 sq. ft)
Balcony: 13.7 sq. m (147.5 sq. ft)

Dexters

Shoreditch
44 Great Eastern Street
London
EC2A 3EP
Sales
0207 483 6371

Energy Rating: C. We aim to make our particulars both accurate and reliable. However they are not guaranteed; nor do they form part of an offer or contract. If you require clarification on any points then please contact us, especially if you're traveling some distance to view. Please note that appliances and heating systems have not been tested and therefore no warranties can be given as to their good working order.

 **RICS** | Regulated
Estate Agent
and Letting Agent

dexters.co.uk