



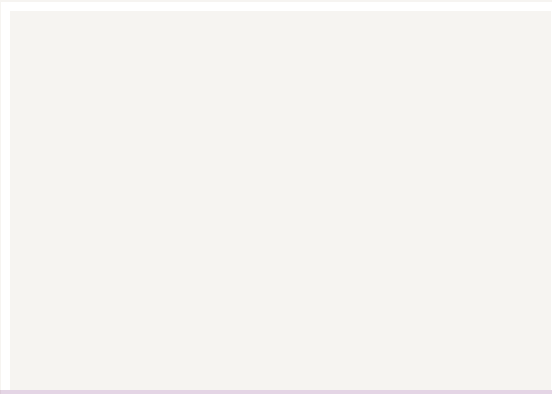
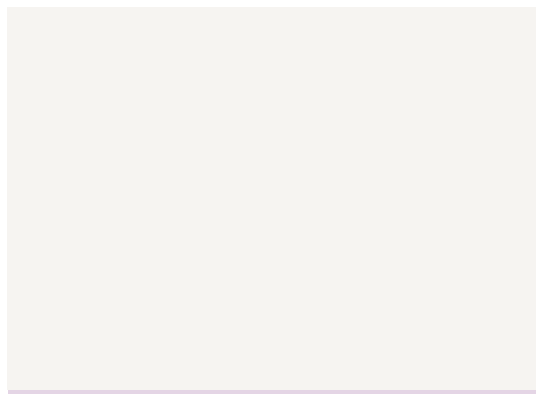
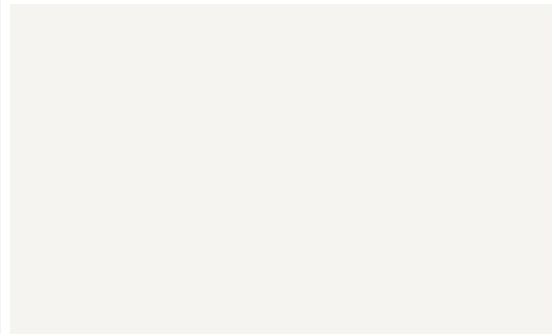
16 MERCHANT SQUARE

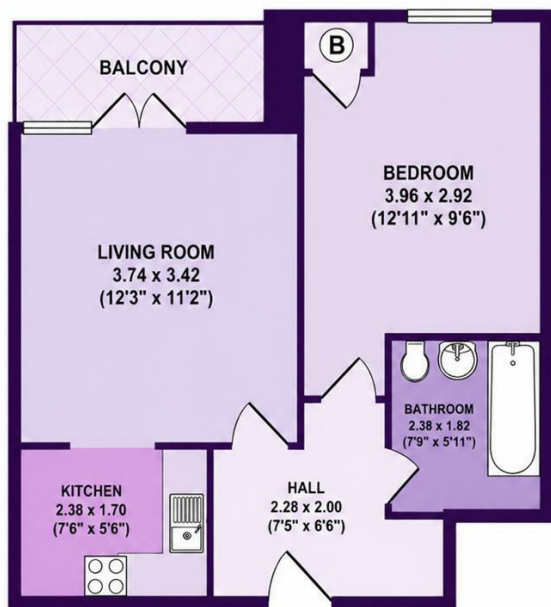
PORTISHEAD
BS20 7PD

16 MERCHANT SQUARE

PORTISHEAD BS20 7PD







APPROX. GROSS INTERNAL FLOOR AREA 41.4 SQM (446 SQFT)

This floor plan is for illustrative purposes only and is not to scale.

Made by Goodman & Lilley LTD



**GOODMAN & LILLEY
BRANCH NETWORK**

HENLEAZE

156 Henleaze Road
Henleaze
BS9 4NB
0117 213 0777
henleaze@goodmanlilley.co.uk

SHIREHAMPTON

9 HIGH STREET
SHIREHAMPTON
BS11 0DT
0117 213 0333

PORTISHEAD

Rembrandt House
36 High Street
Portishead
BS20 6EN
01275 430440
sales@goodmanlilley.co.uk

SHIRE@GOODMANLILLEY.CO.UK

LETTINGS

01275 299010
LETTINGS@GOODMANLILLEY.CO.UK

CLEVEDON

28 Hill Road
Clevedon
BS21 7PH
01275 403 660
clevedon@goodmanlilley.co.uk

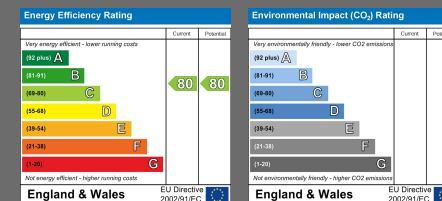
LAND & NEW HOMES

0117 213 0151
LNH@GOODMANLILLEY.CO.UK

1 BEDROOMS
TENURE -

1 RECEPTION ROOMS
IN ALL SQ.FT

1 BATHROOMS
COUNCIL TAX BAND - B



Opening hours vary slightly in each office
Mon to Fri - Usually 9am till 6pm
Saturday 9.00am-4.00pm