



Broadhurst Gardens

South Hampstead, NW6

Asking Price £925,000

Located just 350 feet from the Jubilee & Metropolitan Lines, an exceptionally bright three bedroom, two bathroom first-floor flat comprising 1,173 square feet (109 sq m), situated on the sought-after Broadhurst Gardens.

The property boasts a 29'6 x 17'5 reception room and a modern open plan kitchen, additionally the property has a share of the freehold and a long lease with over 967 years remaining.

Situated within a well-maintained building with lift access, Dom Lodge enjoys a prime position just 300 feet from the excellent shopping, restaurants, cafes and transport connections of the Finchley Road, whilst also being within close proximity of West Hampstead NW6 and Hampstead NW3.



Broadhurst Gardens

South Hampstead, NW6

- Outstanding first-floor flat
- 1,173 square feet
- Three double bedrooms
- exceptionally bright 29' living space
- Well-maintained building with lift access
- Bright & well-balanced accommodation throughout
- Share of freehold & long lease
- Prime location in South Hampstead close to shops
- 350 feet to the Jubilee & Metropolitan Lines



Tenure: Share of Freehold and a lease with 967 years remaining

Service Charge: £9,000 per annum

Ground Rent: £1 per annum

Local Authority: Camden

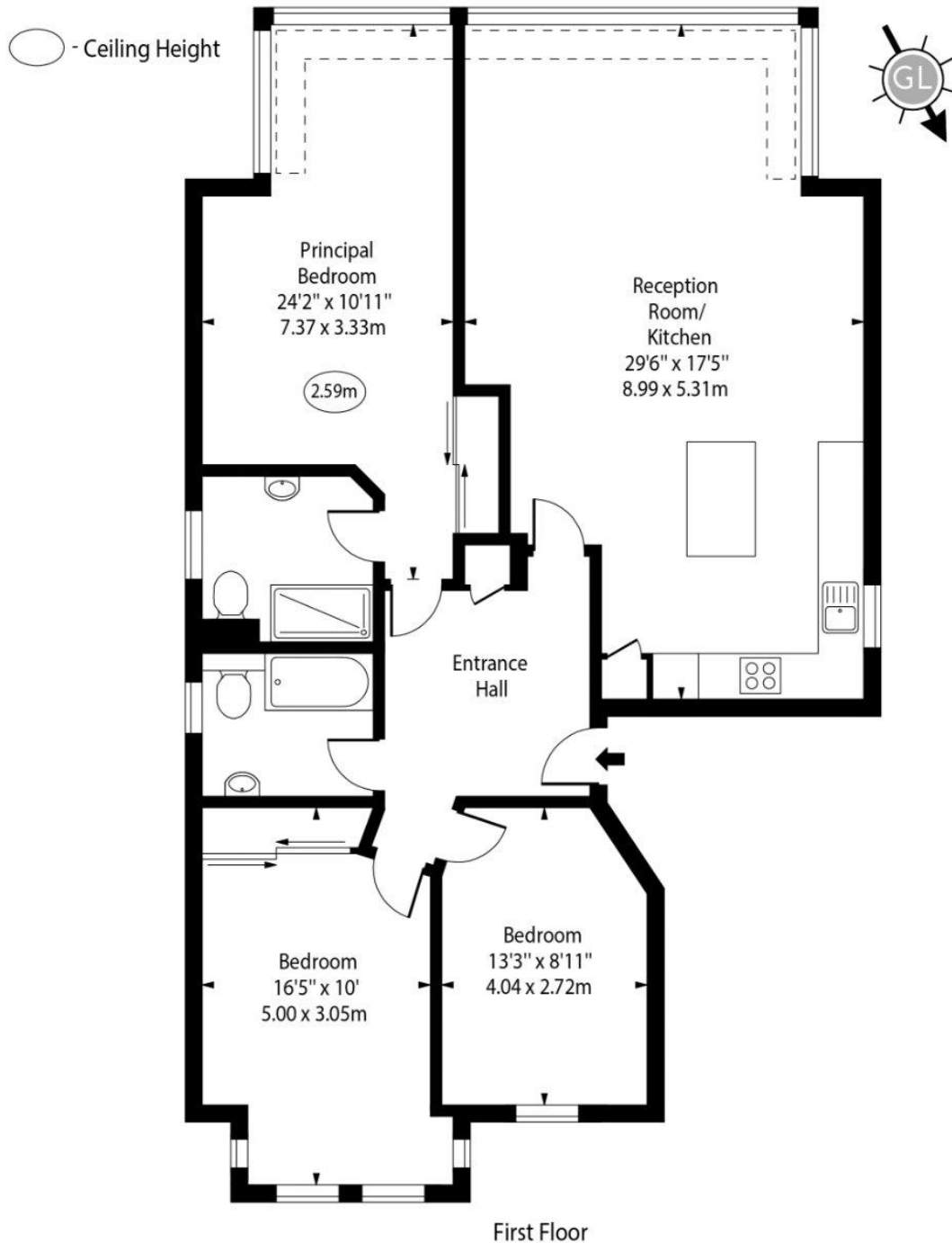
Council Tax Band: G

Score	Energy rating	Current	Potential
92+	A		
81-91	B		
69-80	C	76 C	79 C
55-68	D		
39-54	E		
21-38	F		
1-20	G		

Chestertons Hampstead Sales

55-56 Hampstead High Street
Hampstead
NW3 1QH
hampstead@chestertons.co.uk
020 7794 3311
chestertons.co.uk

Dom Lodge,
Broadhurst Gardens, NW6



Approx Gross Internal Area 1173 Sq Ft - 108.98 Sq M

Every attempt has been made to ensure the accuracy of the floor plan shown. However, all measurements, fixtures, fittings, and data shown are approximate interpretations and for illustrative purposes only. Measured according to the RICS. Not To Scale.

www.goldlens.co.uk
Prepared for Chestertons
Ref. No. 031973E