

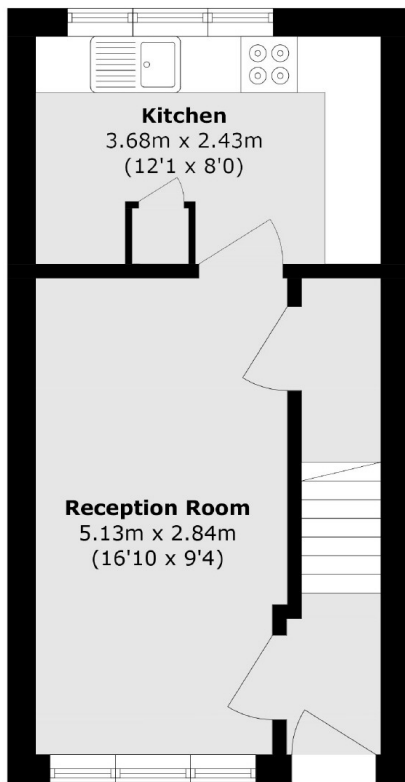


Devonport Road, W12

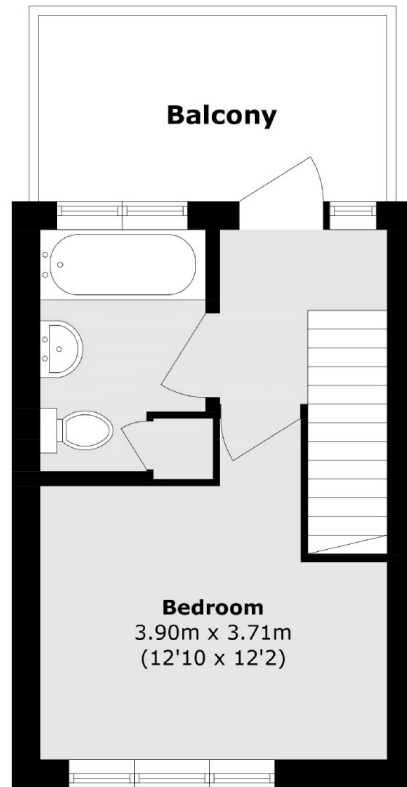
£350,000



- One Bedroom
- Split Level
- Purpose Built
- Private Terrace
- Potential To Modernise
- No Onwards Chain



Raised Ground Floor



First Floor

Total area (approx.): 49.3 sq. m (530.6 sq. ft)

Balcony area (approx.): 7.2 sq. m (77.5 sq. ft)

Marsh & Parsons Brook Green

107-109 Shepherds Bush
Road, London, W6 7LP
020 7605 7765