



Paradise Row, Bethnal Green, E2

London

Guide Price £1,150,000



Paradise Row, Bethnal Green, E2

London

A striking Georgian five-story townhouse set on the charming cobbled streets of Paradise Row in Bethnal Green, this impressive four-bedroom, three-bathroom residence offers 2,131 sq ft of versatile living space.

- Georgian Townhouse
- Four Bedrooms
- Three Bathrooms
- Versatile Living Space Spread Across Five Levels
- 2131 Sq/Ft Internal Living Space
- Chain Free
- Vibrant Bethnal Green Location
- Bethnal Green Gardens and Bethnal Green Tube Station Close By



Rich in character yet brimming with potential, the property presents an exciting opportunity for a discerning buyer to reimagine and create a truly bespoke home. The generous proportions across all five floors provide exceptional flexibility, whether for expansive family living, creative live-work arrangements, or stylish entertaining spaces.

Original features are complemented by the building's substantial footprint, offering a rare canvas for re-design. Light-filled rooms, vertical living across multiple levels, and a layout that lends itself to modern interpretation make this a standout opportunity in one of East London's most sought-after pockets.

Located on the historic cobbles of Paradise Row in the heart of Bethnal Green, the home enjoys a unique blend of village-like charm and urban connectivity, with vibrant local amenities, transport links, and green spaces all within easy reach.

A rare chance to craft a landmark home in a truly distinctive setting.

Council Tax band: F

Tenure: Freehold

EPC Energy Efficiency Rating: E

EPC Environmental Impact Rating: F

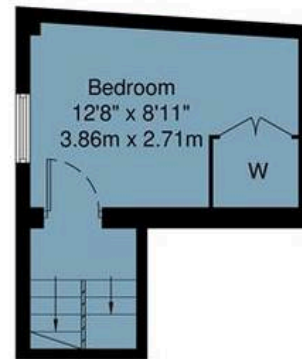
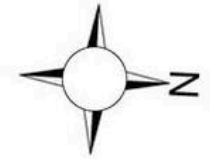




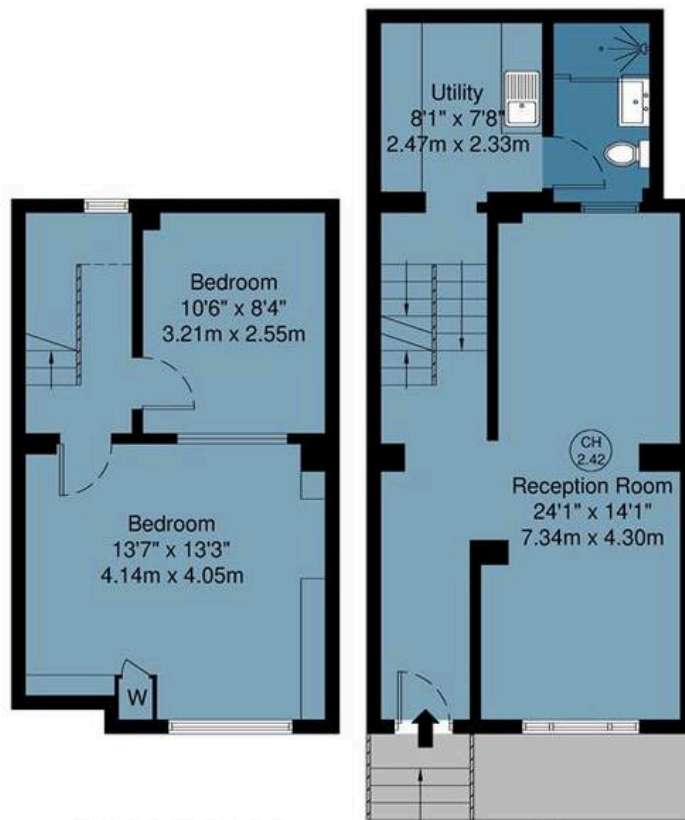


Paradise Row, E2

Approx Gross Internal Area : 198 sq m / 2131 sq ft

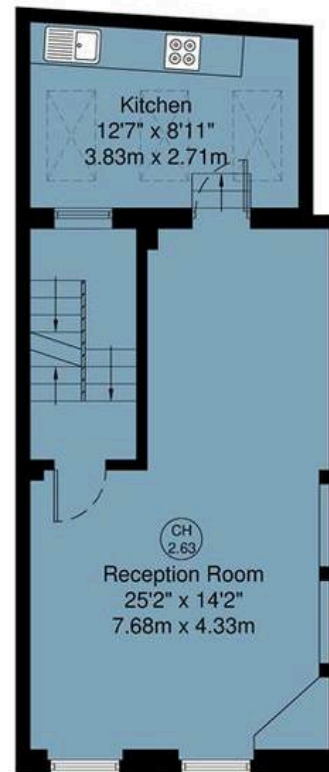


First Floor

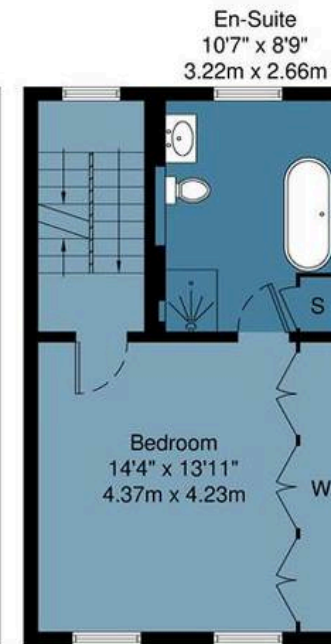


Lower Ground Floor

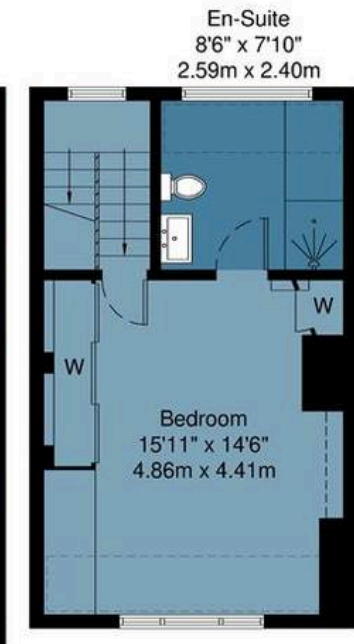
Ground Floor



First Floor



Second Floor



Third Floor

Measurements are approximate and for illustration purposes only. While we do not doubt the accuracy and completeness, we advise you conduct a careful independent assessment of the property to determine monetary value.

FROM EAST LONDON ENERGY TO WEST ESSEX EASE

We Make Moving Home Easy.

At Butler and Stag, we do more than just connect London to West Essex – we make the move seamless. With offices spanning from vibrant East London to the tranquillity of West Essex, we understand the nuances of each area and the journey people take between them. Our marketing goes beyond standard listings, showcasing every property with precision, creativity, and reach that others simply can't match. Coupled with an unparalleled attention to detail, from first enquiry to final move-in, we ensure every client and customer feels informed, supported, and confident. Simply put, we do the little things that make a big difference, setting us apart in every step of the property experience.



LONDON STRATFORD SOUTH WOODFORD BUCKHURST HILL LOUGHTON EPPING BEYOND

Like what you see? Let's talk

Book your **FREE** valuation now



020 8102 1236

london@butlerandstag.com

508 Roman Road, Bow, London, E3 5LU

butlerandstag.uk

IMPORTANT NOTICE - These particulars have been prepared in good faith and they are not intended to constitute part of an offer or contract. We have not performed a structural survey on this property and the services, appliances and specific fittings have not been tested. All photographs, measurements, floor plans and distances referred to are given as a guide and should not be relied upon.

BUTLER & STAG

