



Joslings Close, Shepherds
Bush, W12

Asking Price £325,000



1



1



1



Joslings Close, Shepherds Bush, W12

Asking Price £325,000



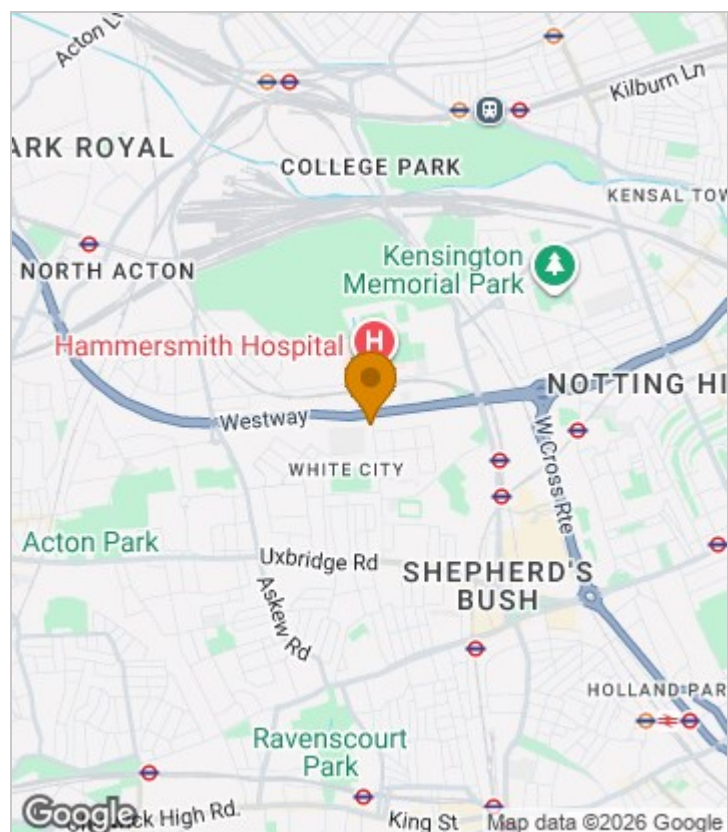
Summary Description

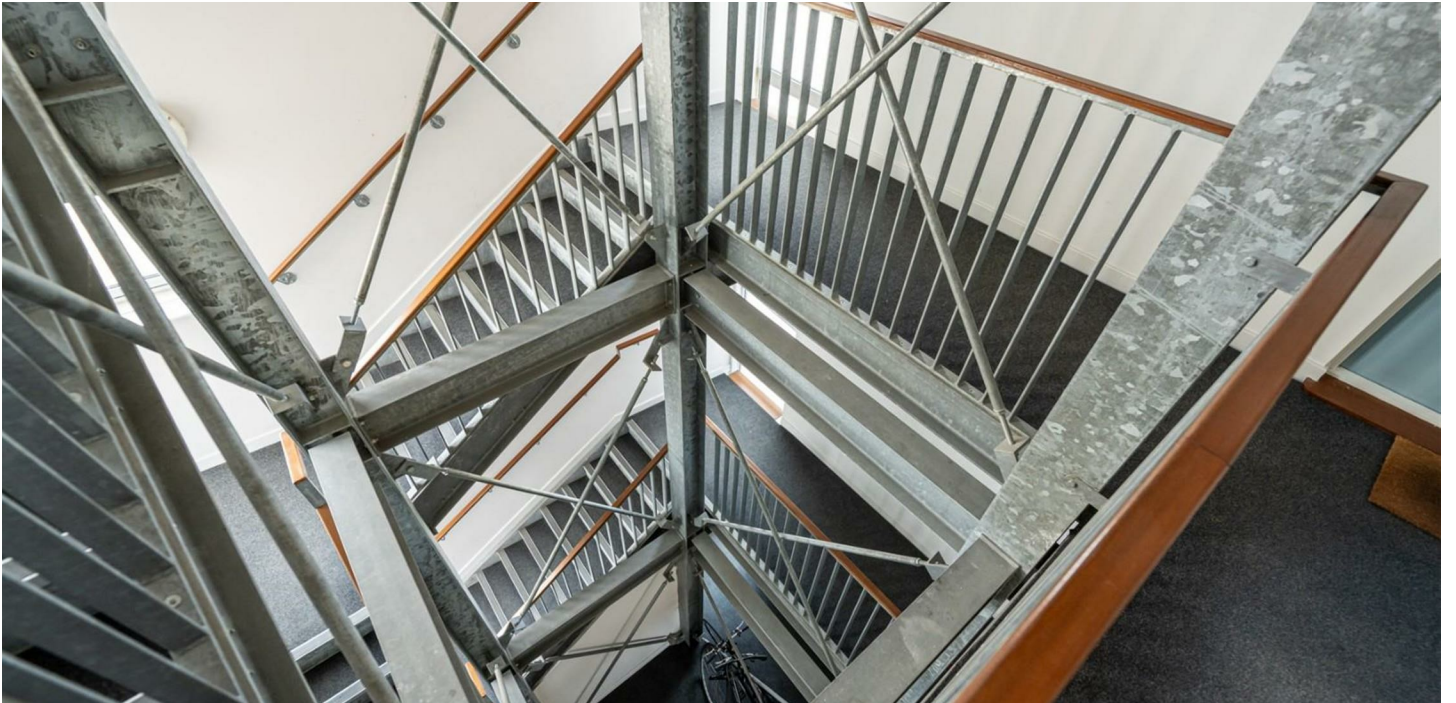
Joslings Close W12. An impressive second floor apartment with a private balcony. Internally the apartment offers generous proportions and offers: spacious reception room with doors out on to a private south facing balcony, one double bedroom with fitted wardrobes, modern bathroom suite and fully fitted kitchen. The flat is offered chain free and comes with your own allocated parking space.

Joslings Close is ideally positioned just a short walk from the vibrant heart of Shepherd's Bush, offering an extensive selection of shops, cafés, bars, and restaurants, as well as the well renowned Westfield White City shopping centre and White City Place. Excellent transport links are available nearby, including White City Station (Central Line) and Shepherd's Bush Market (Hammersmith & City Line). There are also multiple bus routes along Uxbridge Road and Wood Lane, along with quick access to the A40 for motorists.

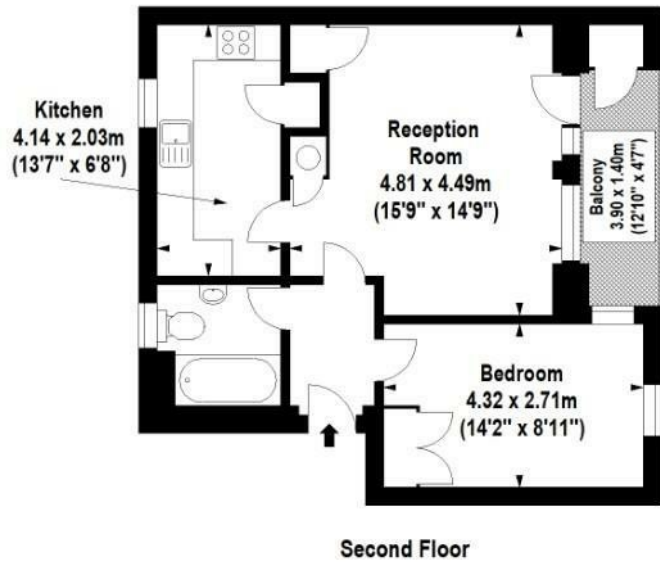
Chain free | Lease to be extended to 168yrs | Service charges of £2,400 per annum.
Hammersmith and Fulham. Council tax band D

Area Map





Floor Plan



For Identification Purposes Only. Not To Scale. © www.totalvista.uk 2026

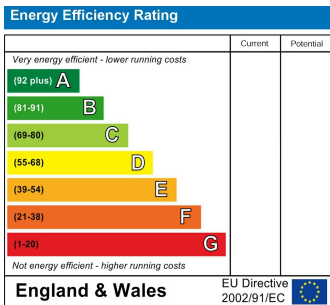


Joslings Close, W12

Approx. Gross Internal Area
49.70 Sq M - 535 Sq Ft



Energy Efficiency Graph



Viewing

Please contact our Sales SB Office on 0208 740 8740 if you wish to arrange a viewing appointment for this property or require further information.

- SECOND FLOOR APARTMENT
- PRIVATE SOUTH FACING BALCONY
- PRIVATE PARKING SPACE
- CENTRAL LINE TUBE (WHITE CITY)
- CLOSE TO WHITE CITY PLACE
- WELL PROPORTIONED
- EXCELLENT CONDITION THROUGHOUT
- CLOSE TO WESTFIELD WHITE CITY
- CENTRAL LOCATION

For further information contact:

Sales SB, 234 Uxbridge Road, Shepherds Bush, London, W12 7JD

Tel: 0208 740 8740 Email: enquiries@jorgensenturner.com

https://www.jorgensenturner.com/

Disclaimer

These particulars, whilst believed to be accurate are set out as a general outline only for guidance and do not constitute any part of an offer or contract. Intending purchasers should not rely on them as statements of representation of fact, but must satisfy themselves by inspection or otherwise as to their accuracy. No person in this firms employment has the authority to make or give any representation or warranty in respect of the property.