

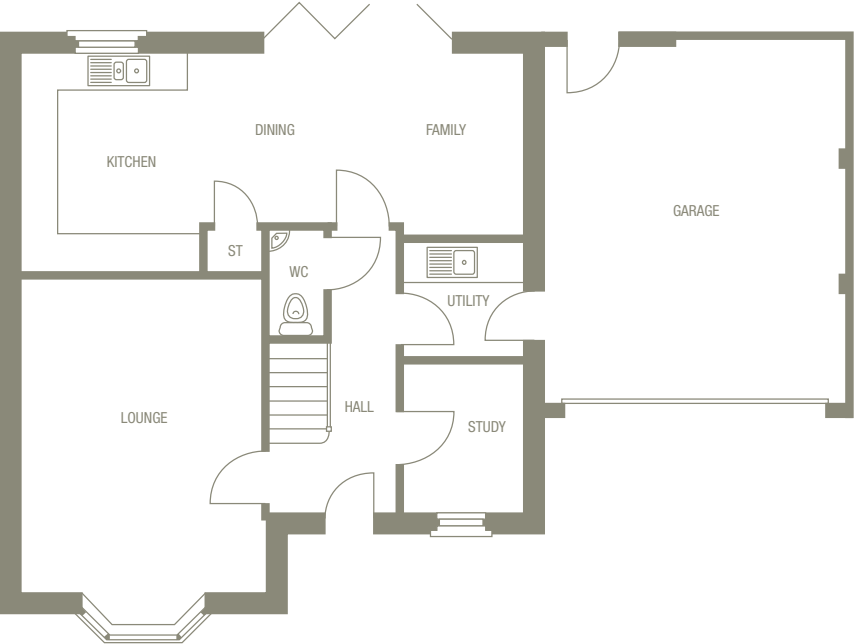
The Henley

4 bedroom detached with double garage.



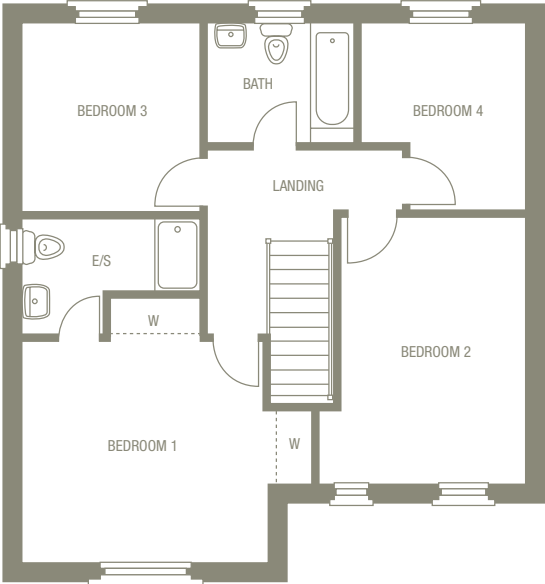
Step inside this classic family home for outstanding modern living. The open-plan family/dining/kitchen is spread across the full width of the house for relaxed living and easy entertaining. A separate utility takes care of practicalities and leads to the integral double garage. With an elegant lounge and private study, the Henley also features 4 double bedrooms, with an impressive master suite providing a luxury retreat.

The Plan | The Henley



Ground Floor

| Room | Size | |
|---------------------------|-----------------|----------------|
| Lounge | 4000* x 5600*mm | 13'1" x 18'4"* |
| Kitchen/ Dining/Family | 8200 x 3550*mm | 10'4" x 18'3"* |
| Utility | 1950 x 1700mm | 6'5" x 5'7" |
| Study | 1950 x 2550mm | 6'5" x 8'4" |
| WC/Cloaks | 890 x 1715mm | 2'11" x 5'7" |
| Garage | 4965 x 6000mm | 16'3" x 19'7" |



First Floor

| Room | Size | |
|-----------|-----------------|----------------|
| Bedroom 1 | 4720* x 4335*mm | 15'6" x 14'3"* |
| En-suite | 2910 x 1900*mm | 9'7" x 6'3"* |
| Bedroom 2 | 3390* x 4350mm | 11'1" x 14'3" |
| Bedroom 3 | 2910 x 3090mm | 9'7" x 10'2" |
| Bedroom 4 | 2735* x 3065*mm | 9'0" x 10'0"* |
| Bathroom | 2375 x 1965mm | 7'9" x 6'5" |

1,462 total sq ft

*Denotes maximum room dimensions.
This is a computer generated image of The Henley, elevation treatment may vary. All internal images are indicative of a Morris house type. Room sizes are approximate. Plots may be handed and any garages may be single or double. Kitchen and bathroom layouts are indicative. These plans are correct at time of going to press, but may be subject to change during construction. Please ensure that you check for specific plot details.

