



**Guide Price**  
**£675,000**

**Freehold**

4x  2x  2x 

**Knowles Road, Horley,  
Surrey, RH6**

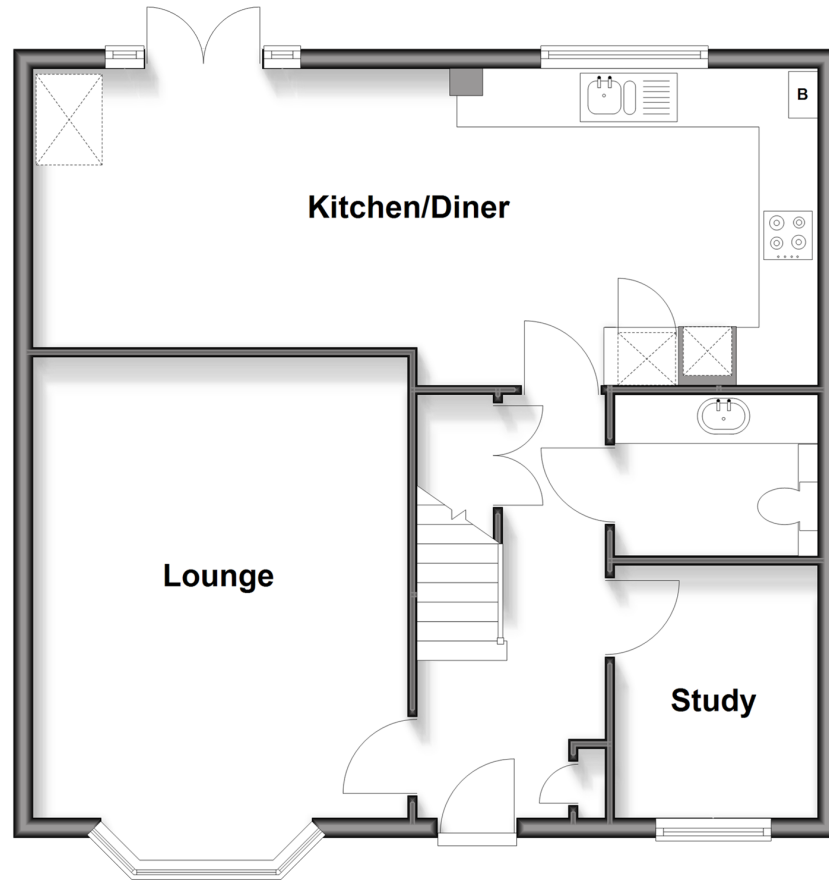
**OVER 60?**

Secure this property  
for up to **59% less!**

**cubitt & west**  
Helping you move forwards

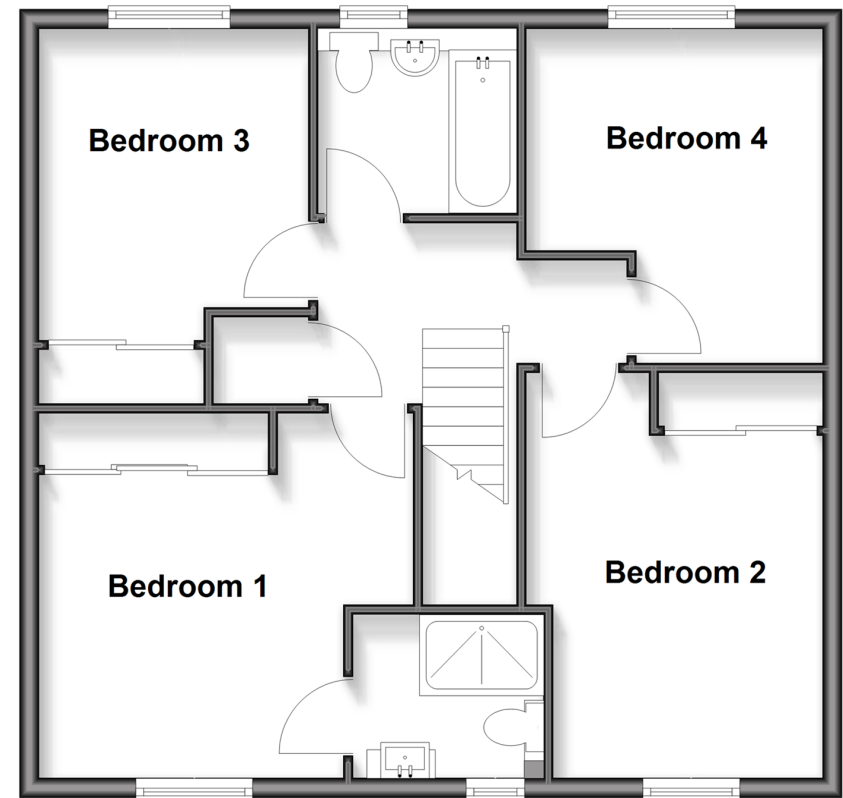
## Ground Floor

Approx. 62.7 sq. metres (675.4 sq. feet)



## First Floor

Approx. 71.8 sq. metres (773.1 sq. feet)



## Accommodation

### GROUND FLOOR

Entrance Hallway

Lounge: 17'1 x 12'7 (5.21m x 3.84m)

Study: 8'9 x 6'9 (2.67m x 2.06m)

Kitchen/Diner: 26'7 x 11'0 (8.11m x 3.36m)

Cloakroom: 6'9 x 5'4 (2.06m x 1.63m)

### FIRST FLOOR

Landing

Bedroom 1: 12'7 x 12'4 (3.84m x 3.76m)

En Suite Shower Room: 6'5 x 5'4 (1.96m x 1.63m)

Bedroom 2: 13'8 x 10'1 (4.17m x 3.08m)

Bedroom 3: 10'6 x 9'3 (3.20m x 2.82m)

Bedroom 4: 11'4 x 10'3 (3.46m x 3.13m)

Bathroom: 6'7 x 6'3 (2.01m x 1.91m)

### OUTSIDE

Garage

Driveway

Rear Garden



## Main features

- Desirable Westvale development
- Walking distance to local school, transport links and parks
- Generously sized garden
- Garage and driveway
- Quiet No-Through Road



### Nearest Schools

Primary Schools: Meath Green Junior School 0.3 miles, Manorfield Primary and Nursery School 0.8 miles, Yattendon School 1.0 miles

Secondary Schools: Oakwood School 1.4 miles



### Transport Information

Train Stations: Horley 1.4 miles, Salfords 1.5 miles, Gatwick Airport 2.1 miles



### Address

Knowles Road, Horley, Surrey, RH6



### Directions

For directions to this property please contact us.



**cubitt&west**  
Helping you move forwards

Call Horley Branch 01293 785338 ■ [cubittandwest.co.uk](http://cubittandwest.co.uk)



■ Through a Homewise Home For Life Plan people aged 60+ can secure this property for up to 59% less, by purchasing a Lifetime Lease



20811387/20260404/TP/SI